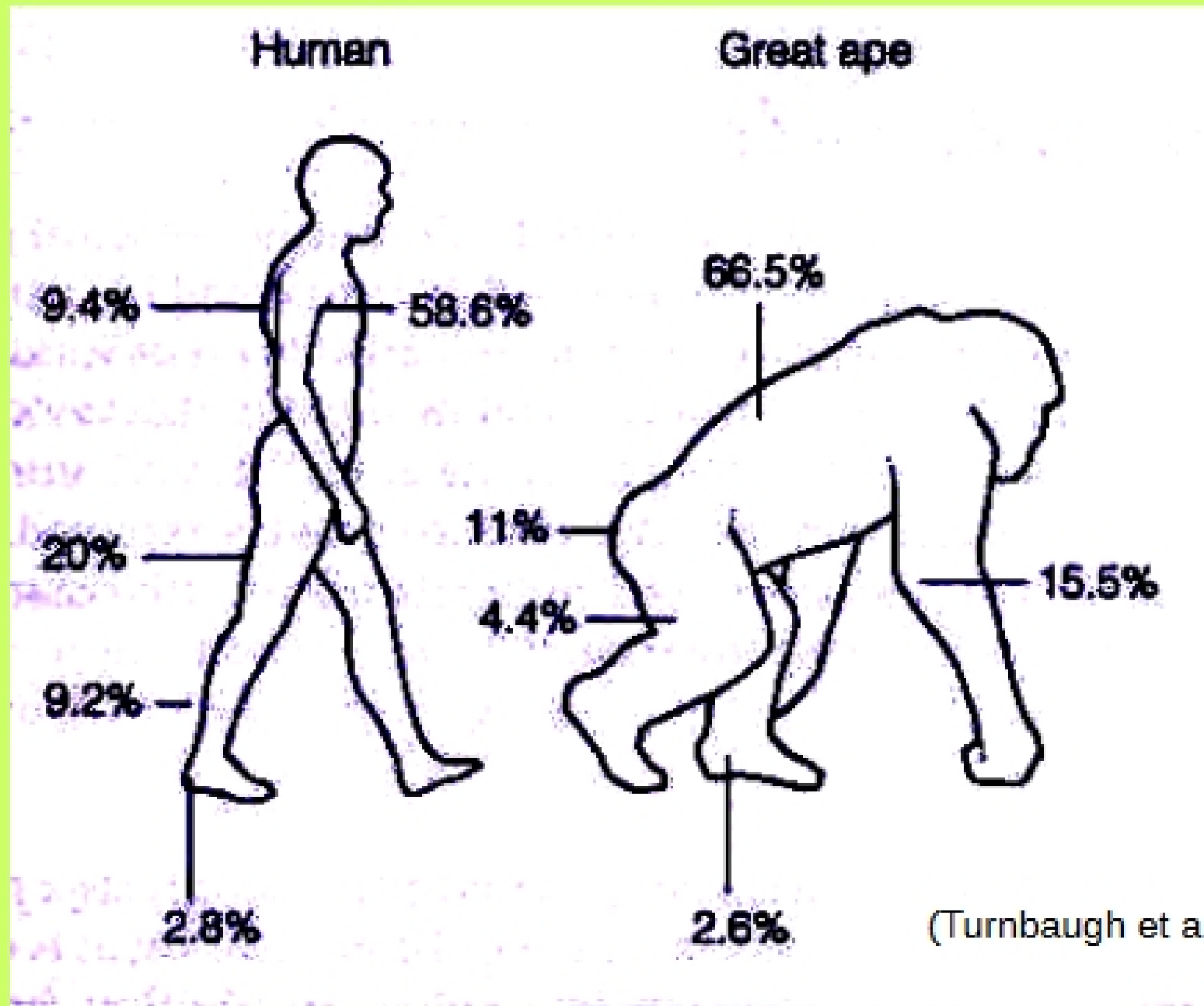


# BIPEDALISM

Some major changes are associated with bipedalism



Human legs are much longer

For example, human thigh = 20% of body height

But in Gorilla only 11%

Proportional lengths of various body segments

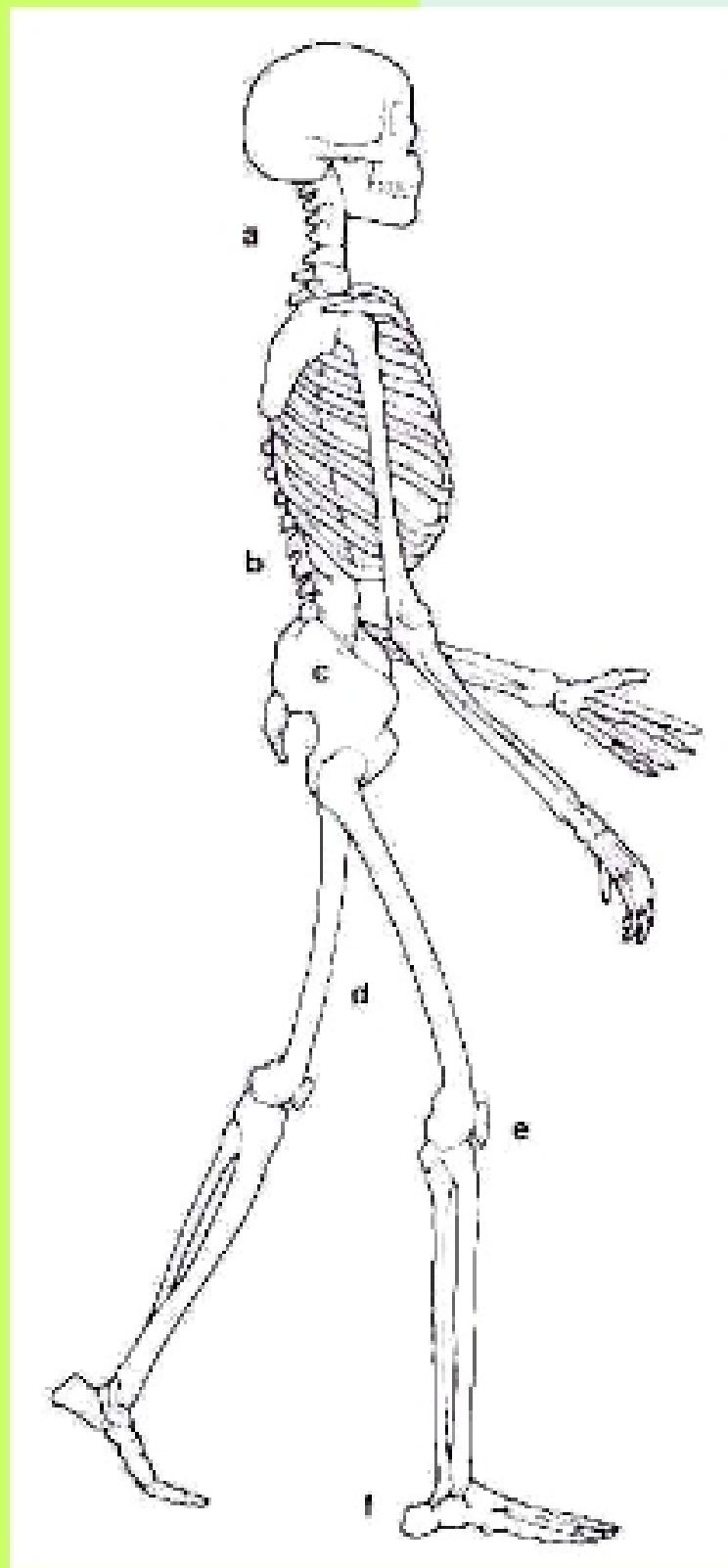
**One problem with the comparison I just showed you:**

For a long time we thought that the last common ancestor for gorilla, chimpanzee/bonobo, and human was a knucklewalker

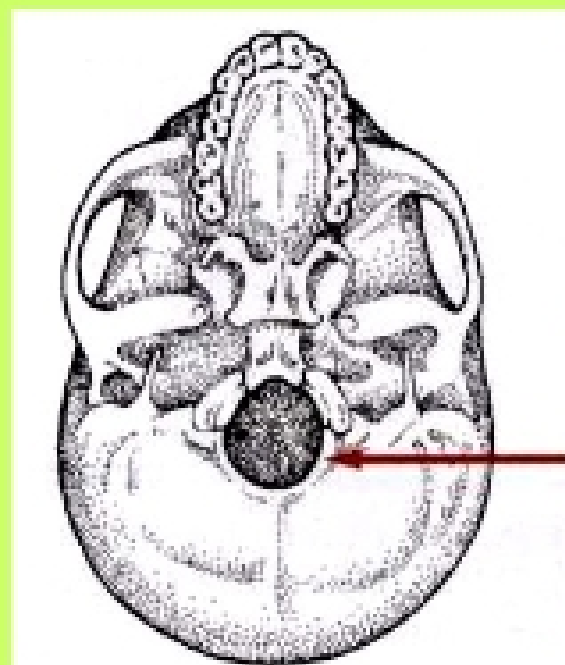
**BUT now we think that ancestor was arboreal**

AND that knucklewalking among chimp/bonobo and gorilla began **AFTER** humans split away

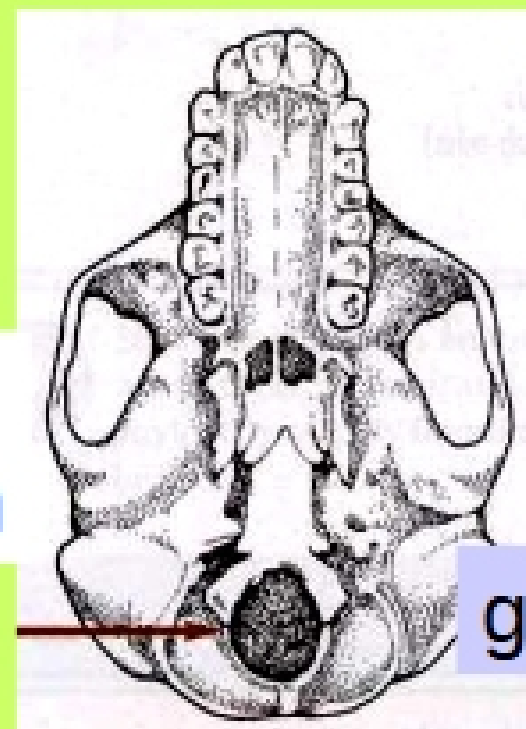
# Let's start with the head and move down toward the feet



(Turnbaugh et al. 2002:226,230)

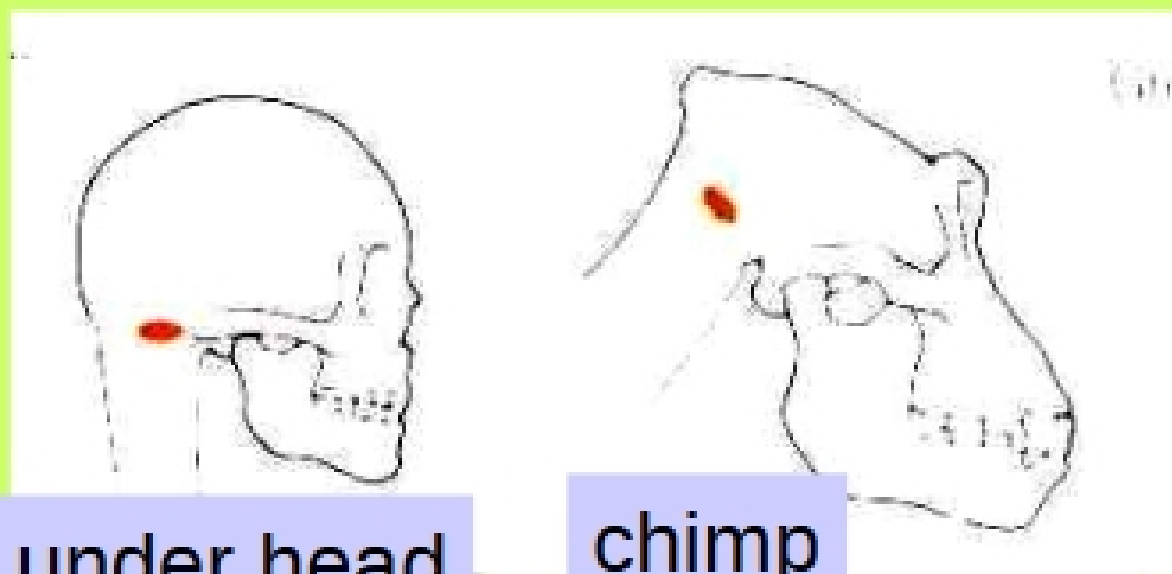


foramen  
magnum



gorilla

More centered to balance  
head on spine



under head

chimp