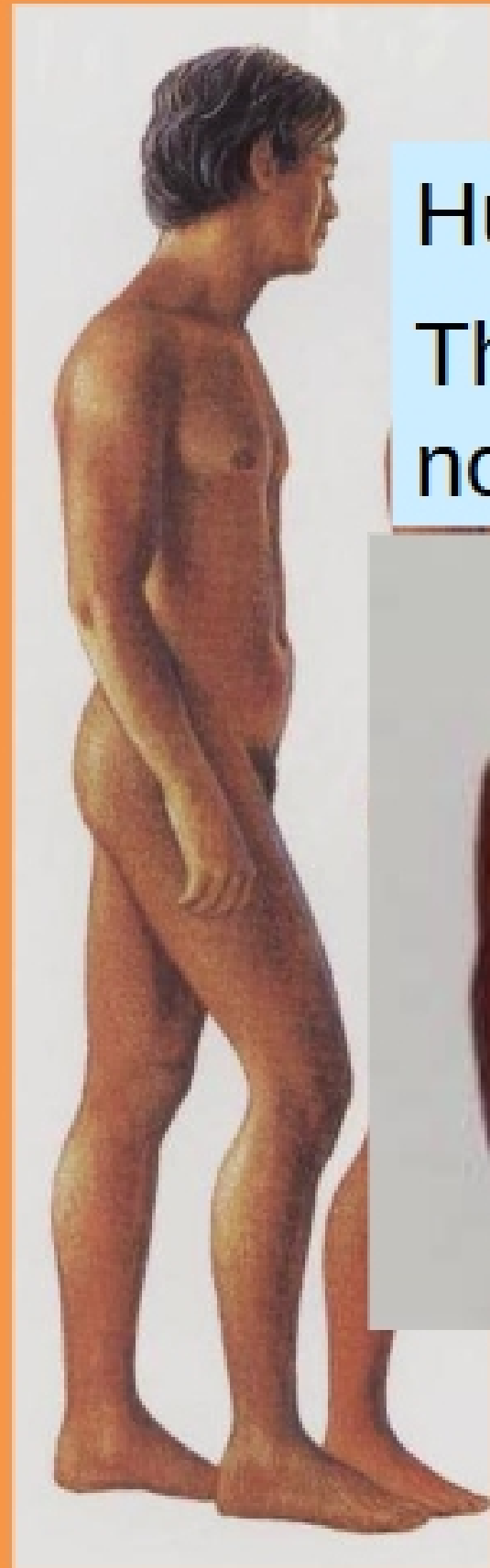


**Locomotion:** how one normally moves

Humans are **bipedal**: walk on two limbs  
They are unique among the primates for normally using this form of locomotion



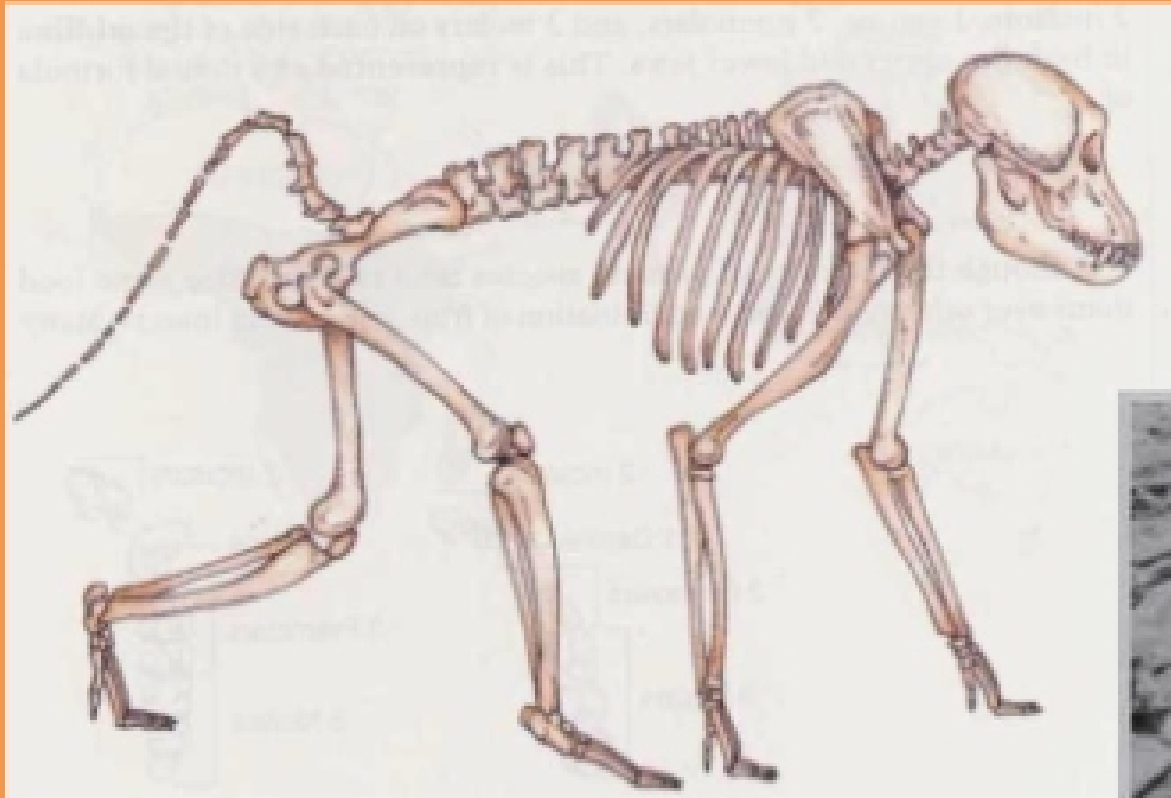
The foot is very specialized for walking bipedally

(National Geographic 1993)

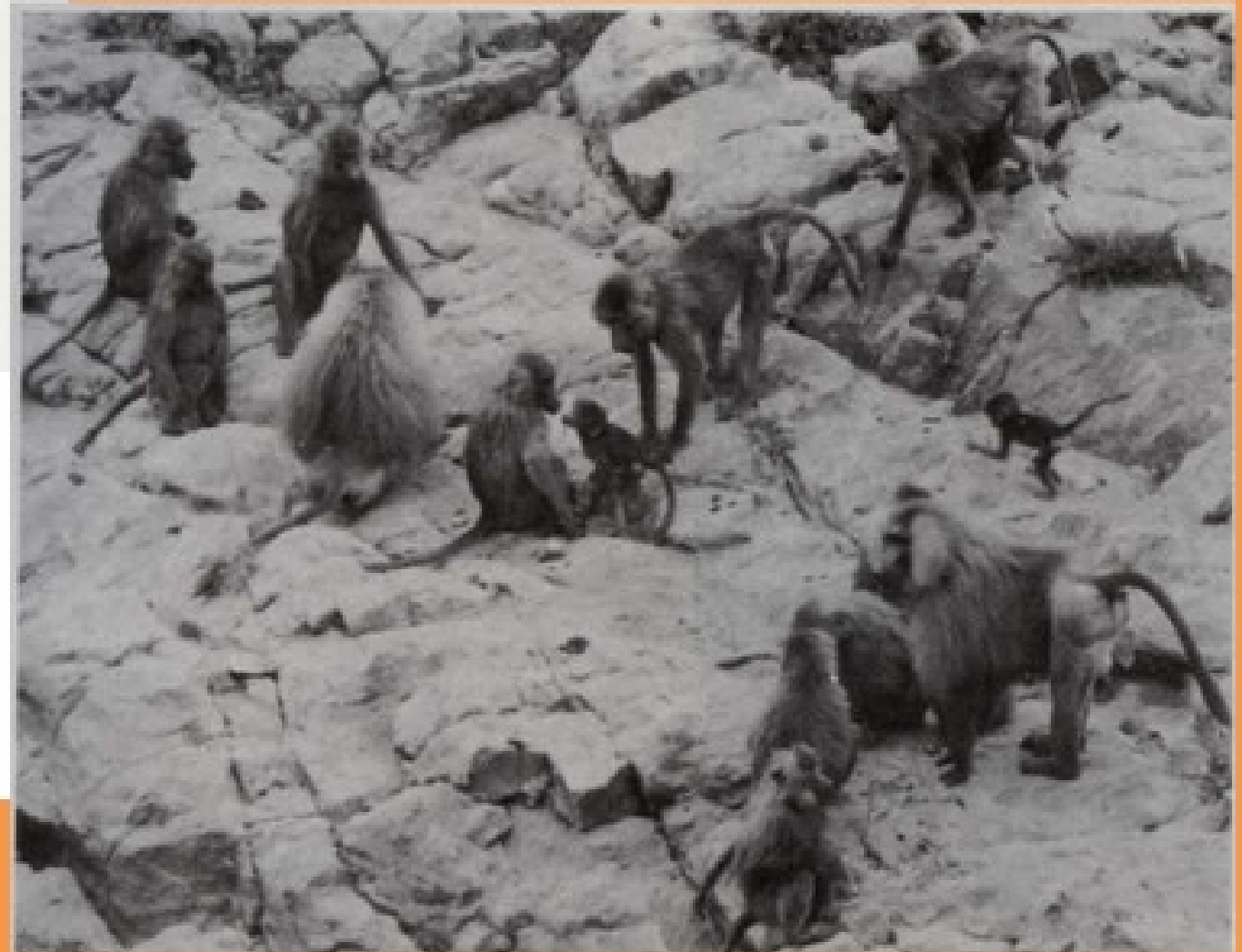
## Terrestrial quadruped:

On ground,  
walks on four limbs

Note the palms are down

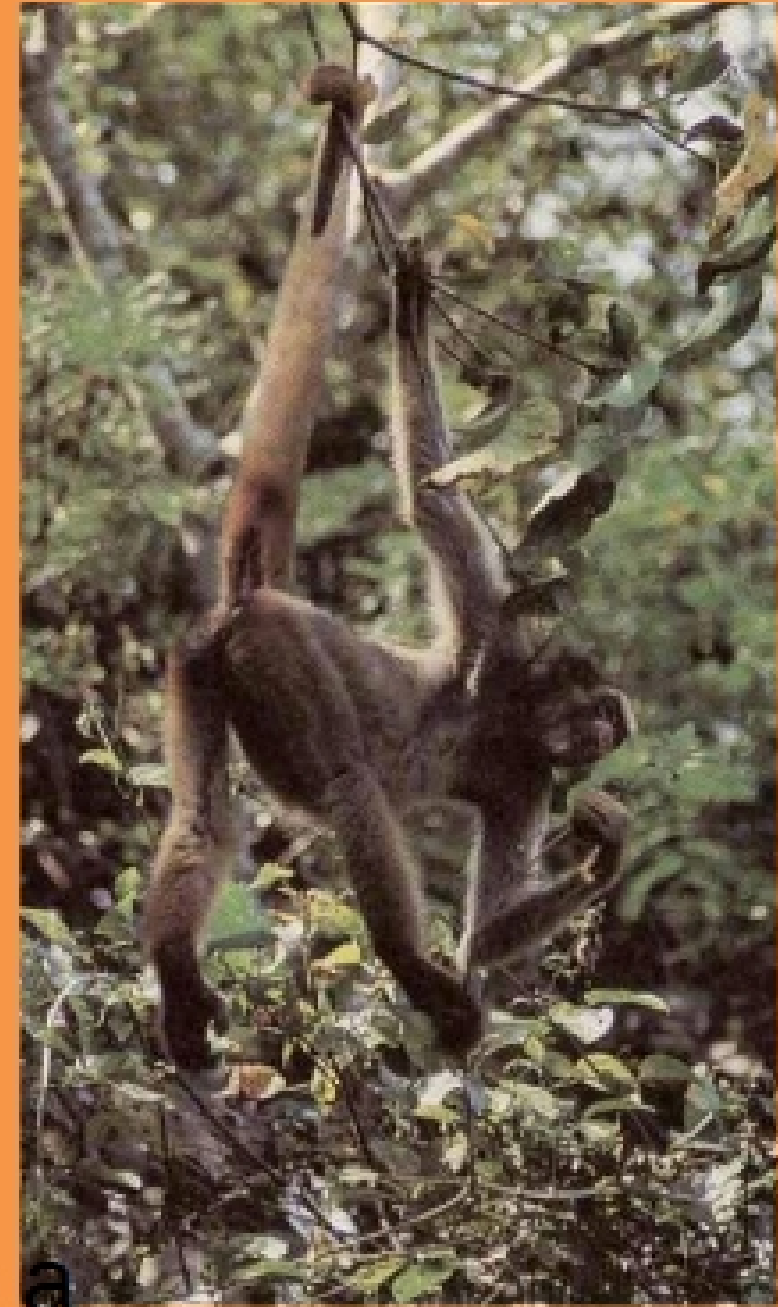
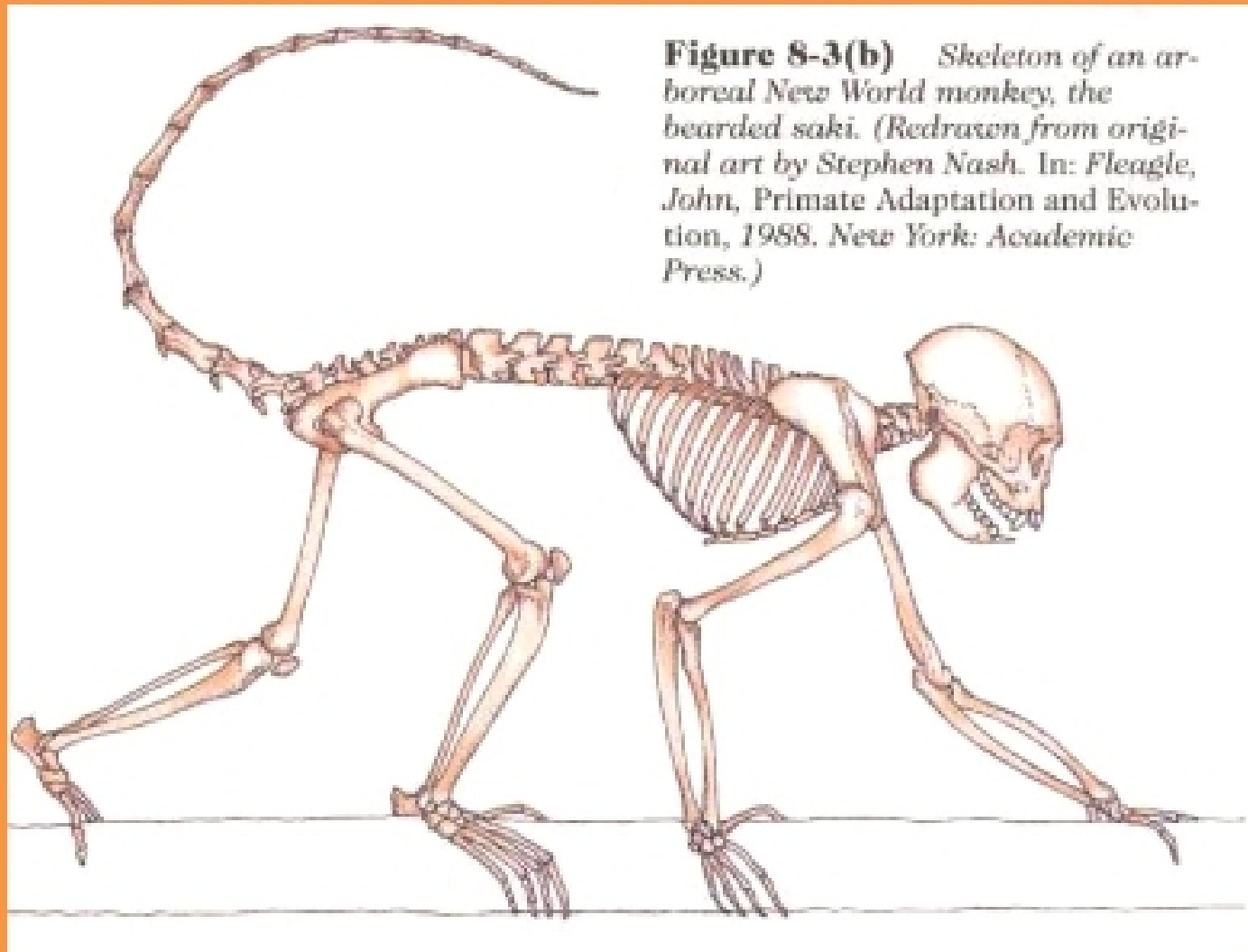


**Figure 8-3(a)** *Skeleton of a terrestrial quadruped (savanna baboon). (Redrawn from original art by Stephen Nash. In: Fleagle, John, Primate Adaptation and Evolution, 1988. New York: Academic Press.)*



(Turnbaugh et al. 1993:172)

# Arboreal quadruped



Note that the spider monkey has a prehensile (grasping) tail -- found only among some New World monkeys

Northern woolly spider monkey from Brazil  
(Feder & Park 2001:115)