

Genetics

pg 43. Now Solve This

a) ROUND YELLOW \times WRINKLED YELLOW
 \times Y^y only \rightarrow 3/4 round yellow & 1/4 wrinkled yellow
 ROUND YELLOW \times WRINKLED YELLOW

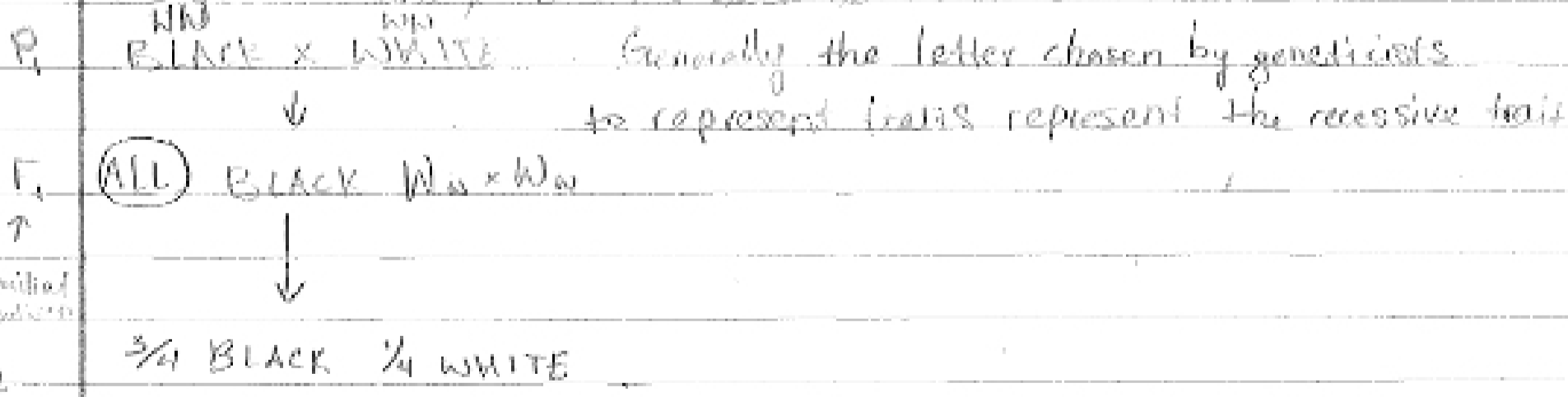


1 : 2 : 1 : 3 : 1 phenotype
 RR : Rr : rr

b) ROUND YELLOW \times WRINKLED YELLOW
 \times Y^y only
 WRINKLED YELLOW
 1 : 1 3 : 1 1/16 wrinkled & yellow
 2/16 wrinkled & green
 6/16 round & yellow
 2/16 round & green

c) ROUND YELLOW \times WRINKLED GREEN
 \times Y^y only
 WRINKLED GREEN
 1/4 round & YELLOW
 1/4 round & GREEN
 1/4 WRINKLED & YELLOW
 1/4 WRINKLED & GREEN

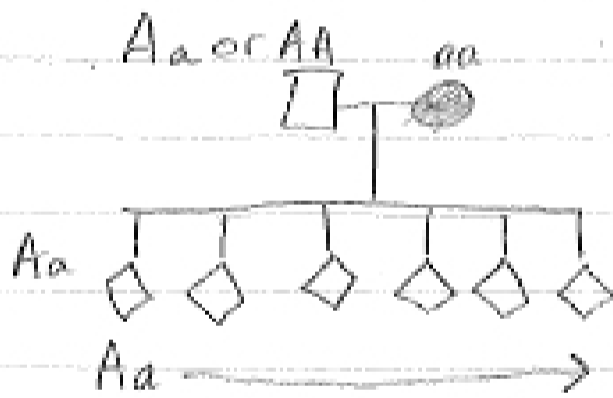
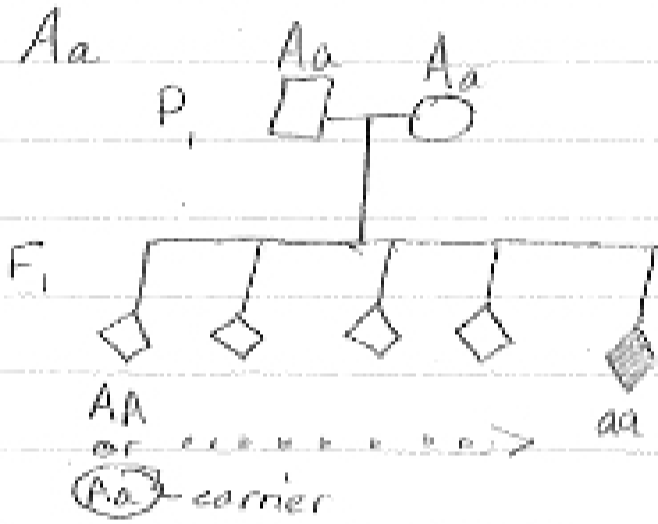
Prob #2: monohybrid cross because 1 trait



1st familial cross

~~send both to teacher~~

Q:3) Albinism - failure to make melanin



Q:6) $RRww$ \times crossed with itself

ww ALL $RRww$
 P, ROUND YELLOW \times WRINKLED GREEN

ww \downarrow Gg
 F₁ (ALL) ROUND YELLOW

F_2 9 $W_G_$ 1 $wwgg$
 3 $wwG_$
 3 W_gg

	WG	wG	Wg	wg
WG	WG	wG	Wg	wg
wG	wG	ww	wG	wg
Wg	Wg	wg	Wg	wg
wg	wg	wg	wg	wg

Link

Fockling Method

Ww x Ww

↓

3:1

GENE 1

SHAPE

$\begin{matrix} 3 \\ \text{yellow} \end{matrix} \rightarrow 9 \text{ round + yellow}$

$\begin{matrix} 3 \\ \text{Round} \end{matrix}$

$\begin{matrix} 1 \\ \text{green} \end{matrix}$

$\rightarrow 3 \text{ ROUND + GREEN}$

$\begin{matrix} 1 \\ \text{wrinkled} \end{matrix}$

$\begin{matrix} 3 \\ \text{yellow} \end{matrix}$

$\rightarrow 3 \text{ WRINKLED + YELLOW}$

$\begin{matrix} 1 \\ \text{green} \end{matrix}$

$\rightarrow 1 \text{ WRINKLED + GREEN}$

Q: