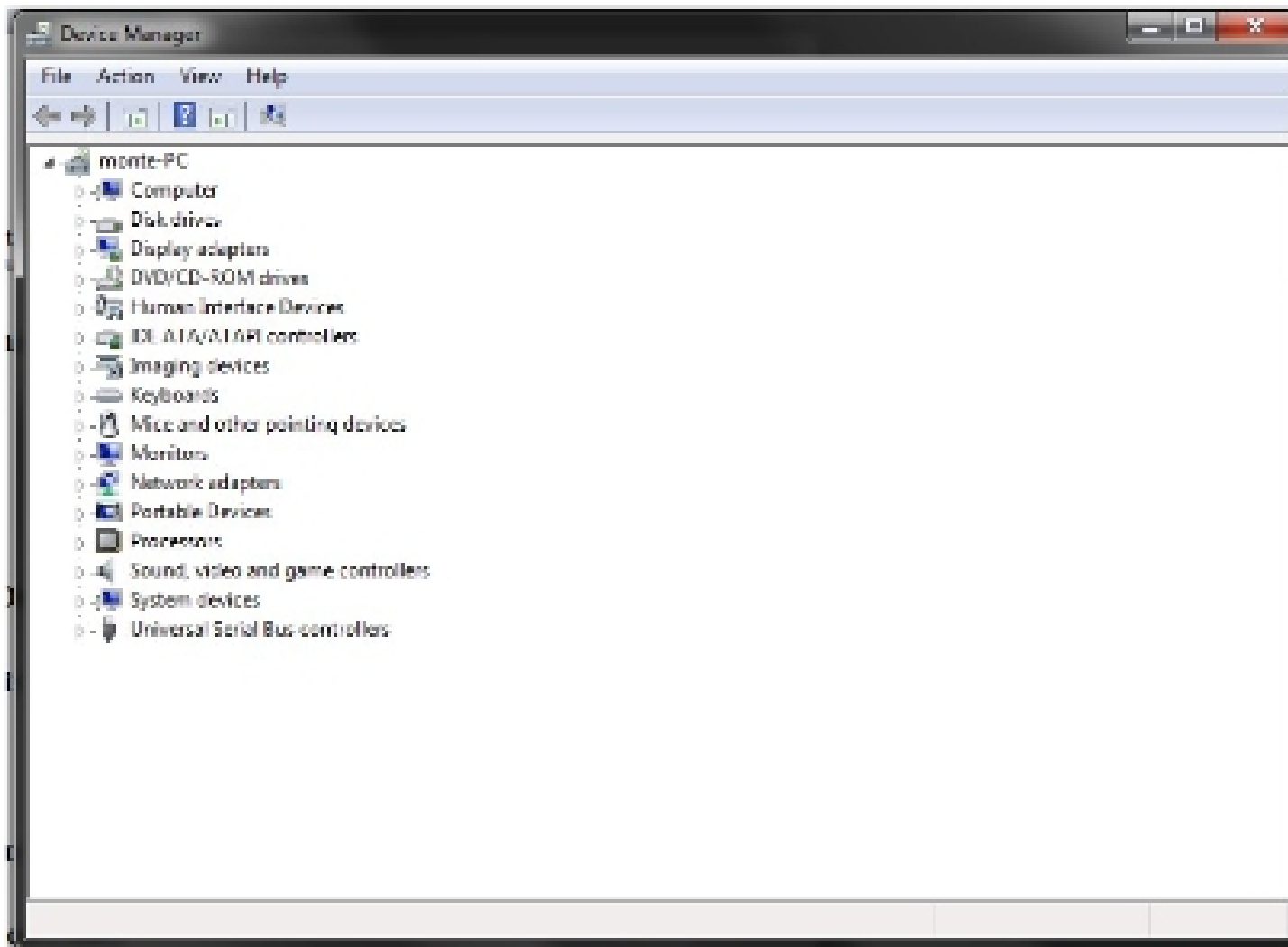


Supporting Activity

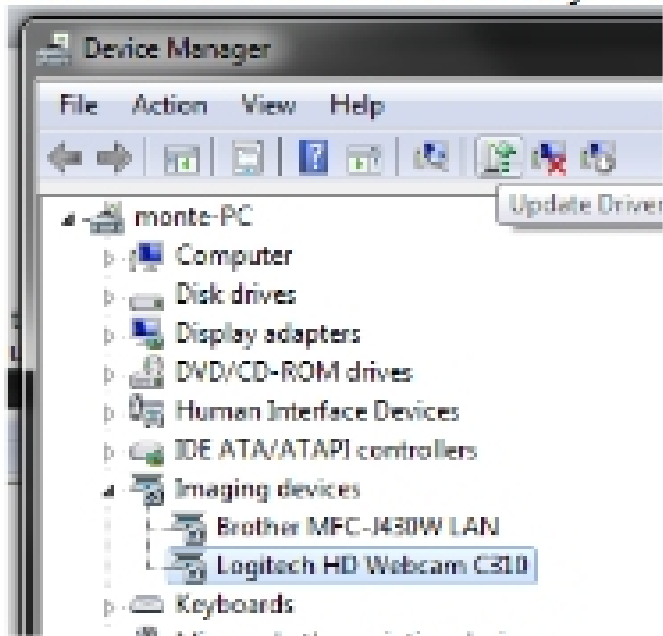
CIS/ 319

Update a Device Driver

To update a driver the easiest way is to open your control panel, click on "System and Security" then click on "Device Manager". This will bring up a window that looks like this.

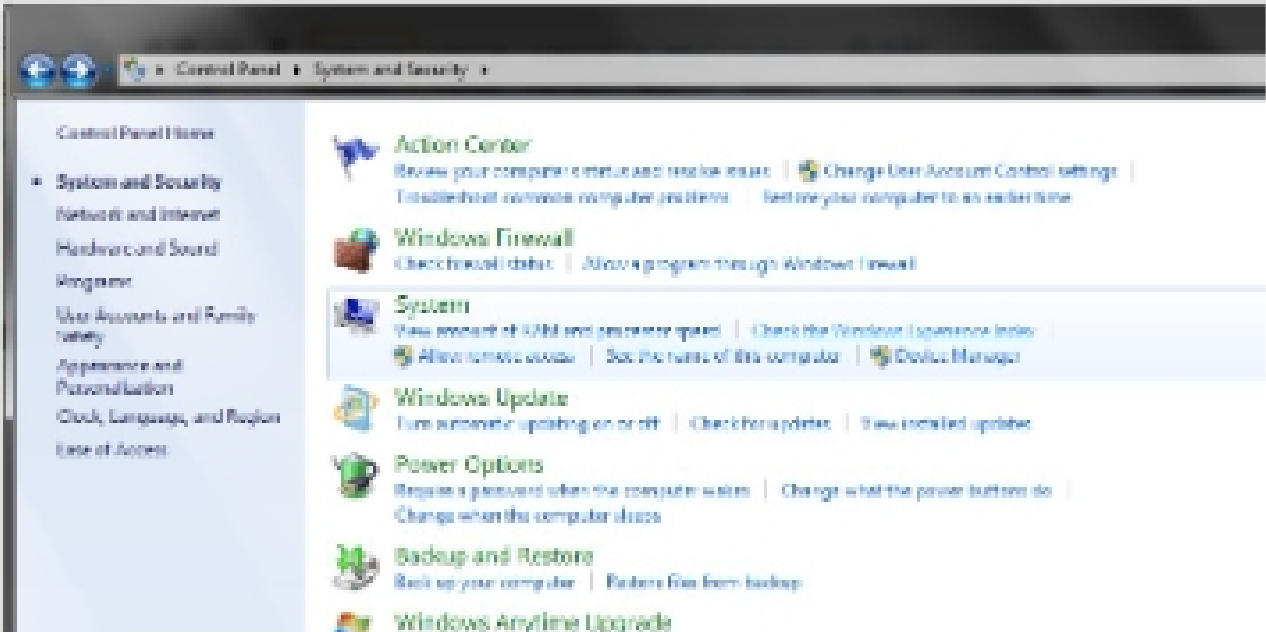


From this window you see the list of devices that are in/attached to your computer. From here you can select individual devices to see if your drivers are up to date.

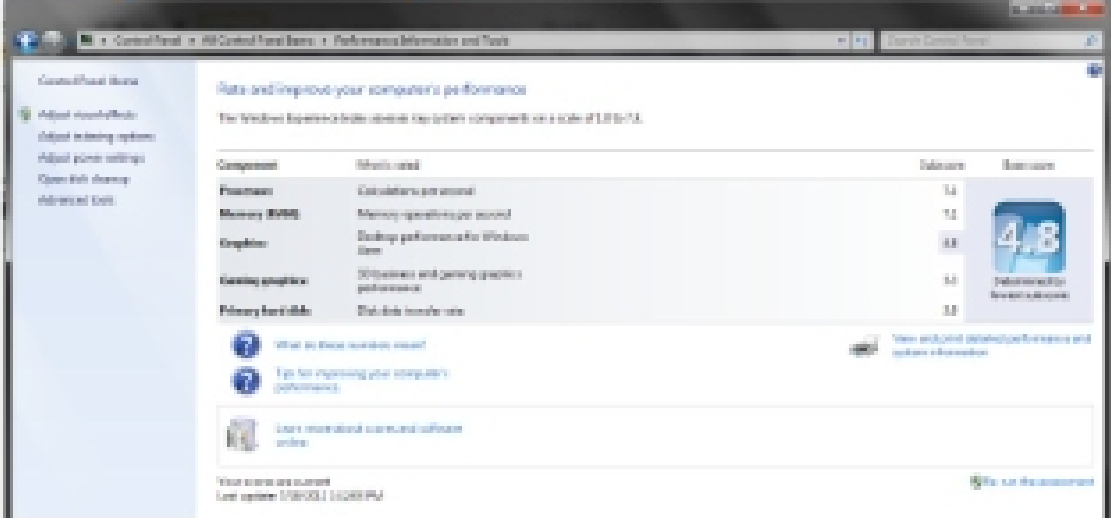


Evaluate System Performance in Windows 7

Open control panel and click on "System and Security". Find "Check Windows Experience Index".

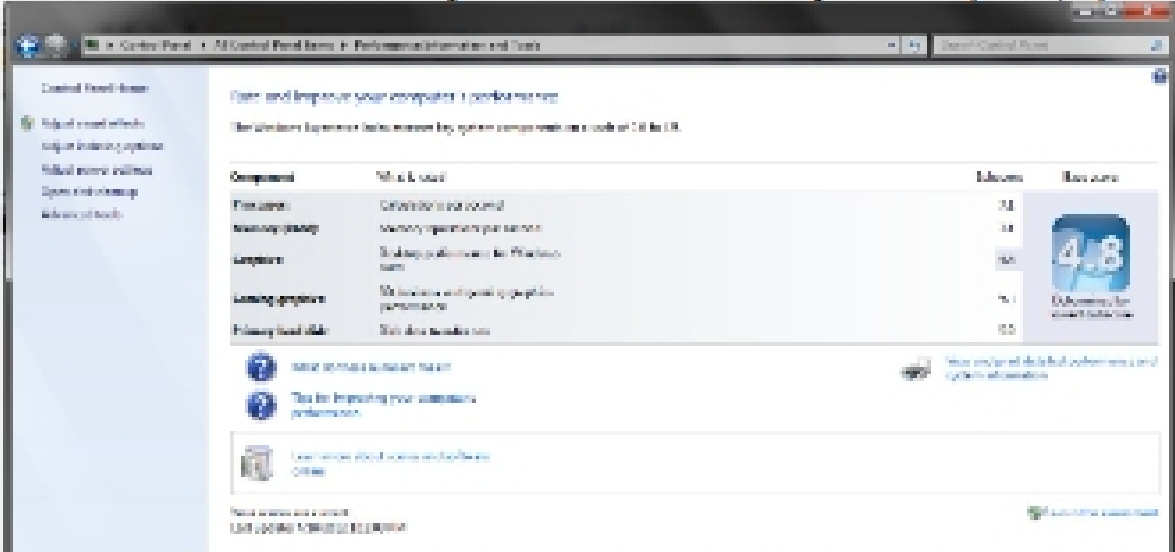


Clicking the link will bring up a window that looks like:



Checking the RAM

To see the amount of ram you have installed on your computer, open "Windows Experience Index".



This page tells you how much is installed and how much is "useable".

Remove and Install RAM

Remove your computer tower face plate.

The first task is to remove your old RAM and check the labeling, which is the surest way of making sure the replacement RAM will work. Use both thumbs or two fingers to simultaneously depress the locking levers on the memory slot, and do it slowly so you don't pop the card up into the air.