

Airport Application using PHP

Purpose:

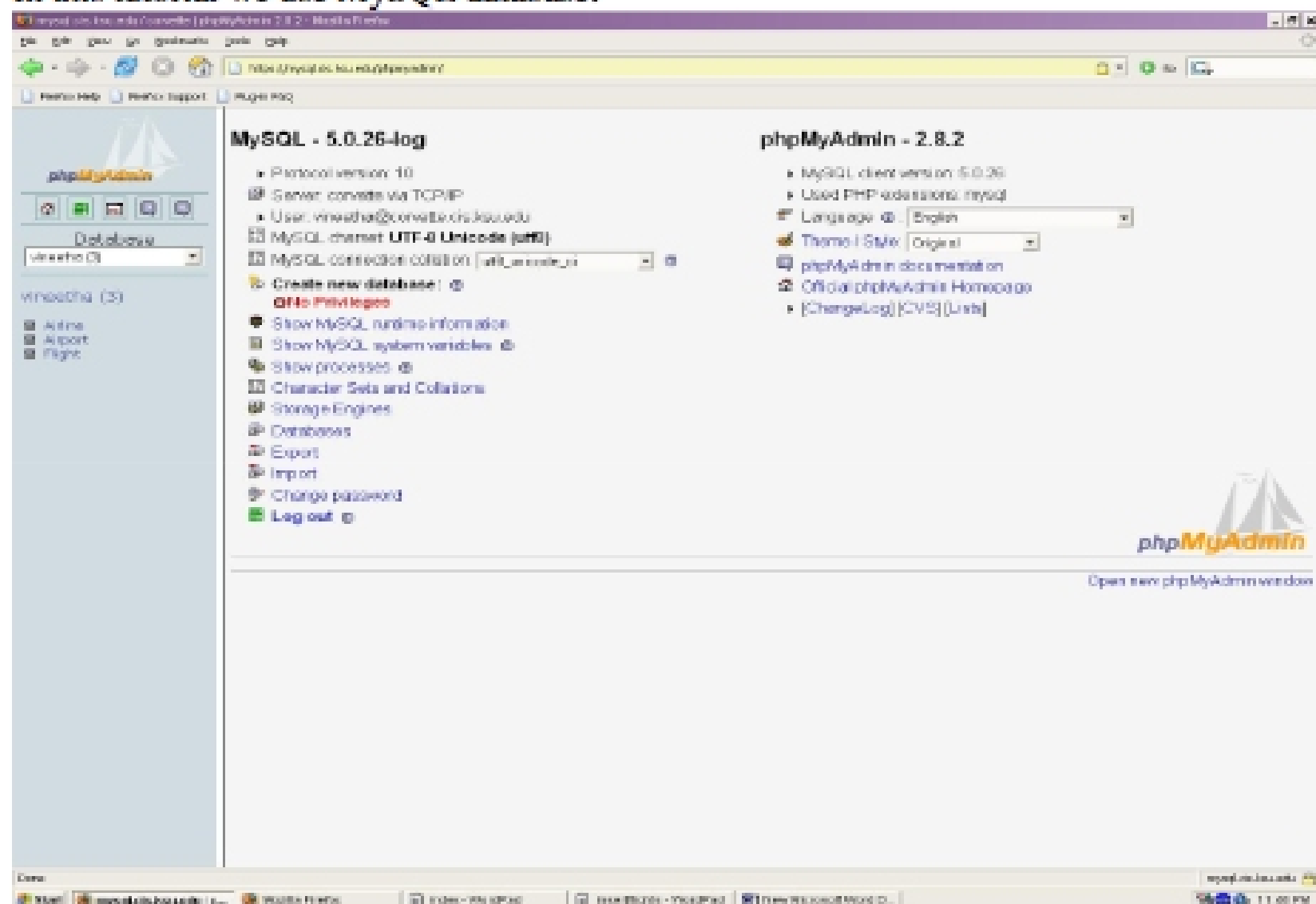
In this Tutorial we build an application that can be used to display details of flights and to insert the flight details using PHP.

Prerequisites:

- Install an Apache server on a Windows or Linux machine
<http://httpd.apache.org/download.cgi>
- Install PHP on a Windows or Linux machine <http://www.php.net/downloads.php>
- Install or have access to MySQL on a Windows or Linux machine
<http://www.mysql.com/downloads/index.html>

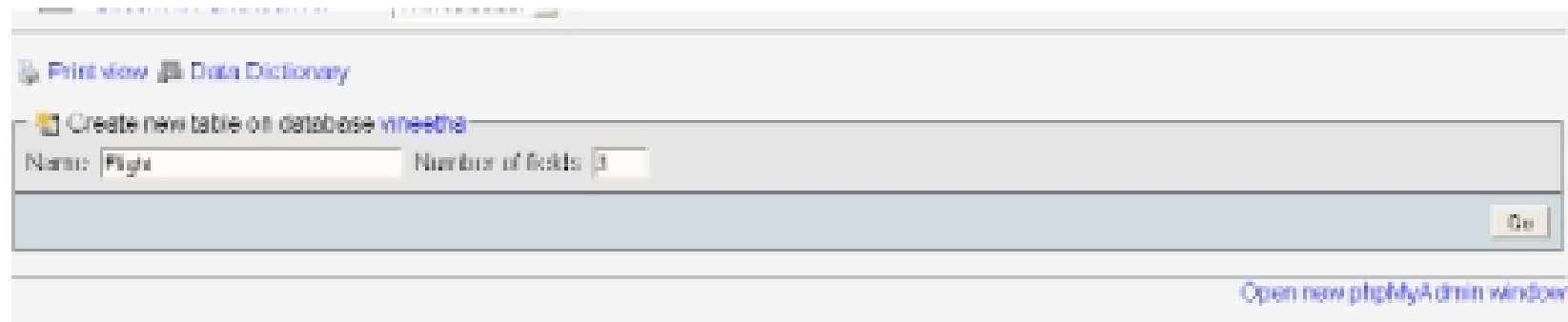
Creating Database Tables:

In this tutorial we use MySQL database.



Creating tables:

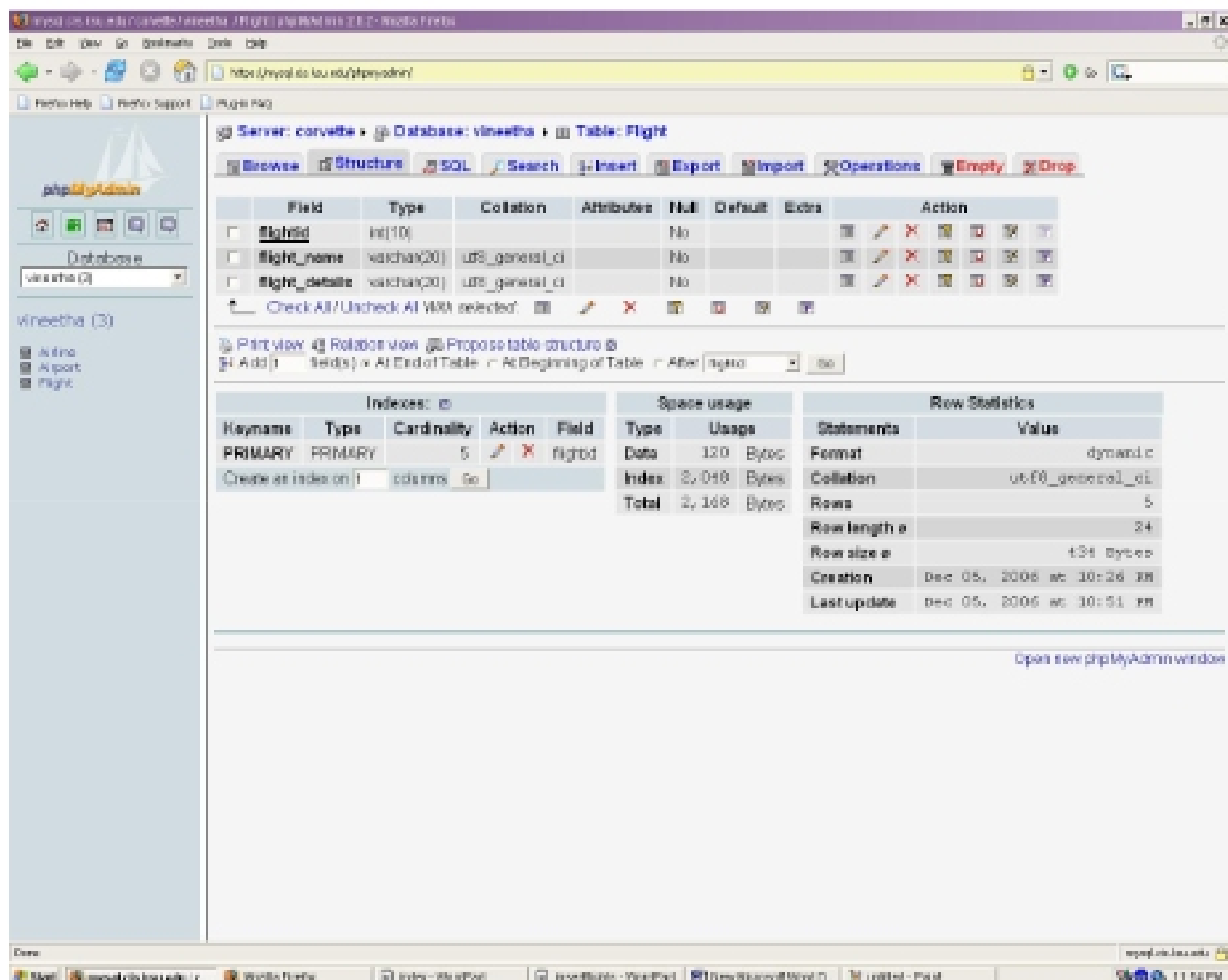
Select the Database. At create option give the name of the table “Flight” and specify the Number of fields ‘3’. Click **GO**.



Give the structure for the table as follows:

Field	Type	Length/Values
flightid	int	10
flight_name	varchar	20
flight_details	varchar	20

NOTE: check the primarykey option for “flightid” field
Click **SAVE** and **GO**.



Insert values using the Insert tab. Click GO.

The screenshot shows the phpMyAdmin interface with the 'Insert' tab selected for the 'Flight' table. The table structure is displayed with columns: flight_id (int(10)), flight_name (varchar(20)), and flight_details (varchar(20)). The 'Value' column shows the values 101, LUFTHANSA, and LH. Below the table structure, there are input fields for each column and a 'Go' button to execute the insert operation.

Field	Type	Function	Null	Value
flight_id	int(10)			101
flight_name	varchar(20)			LUFTHANSA
flight_details	varchar(20)			LH

Inserts new row and then Go back to previous page

Go Post

Open new phpMyAdmin window

The browse tab shows the table with inserted data.

The screenshot shows the phpMyAdmin interface with the 'Browse' tab selected for the 'Flight' table. The table structure is displayed with columns: flight_id (int(10)), flight_name (varchar(20)), and flight_details (varchar(20)). The 'Value' column shows the values 101, LUFTHANSA, and LH. Below the table structure, there are input fields for each column and a 'Go' button to execute the insert operation.

Showing rows 1 - 4 (5 total). Query took 0.0005 sec

```
SQL query:
SELECT *
FROM Flight
LIMIT 5, 30
```

Sort by key: Name

flight_id	flight_name	flight_details
530	US AIRWAYS	rfyblcofh
101	LUFTHANSA	LH1
102	BRITISH	B1
103	AIR INDIA	A1
104	EMIRATES	E1

Bookmark this SQL query

Label: Let every user access this bookmark

Bookmark this SQL query

Open new phpMyAdmin window