

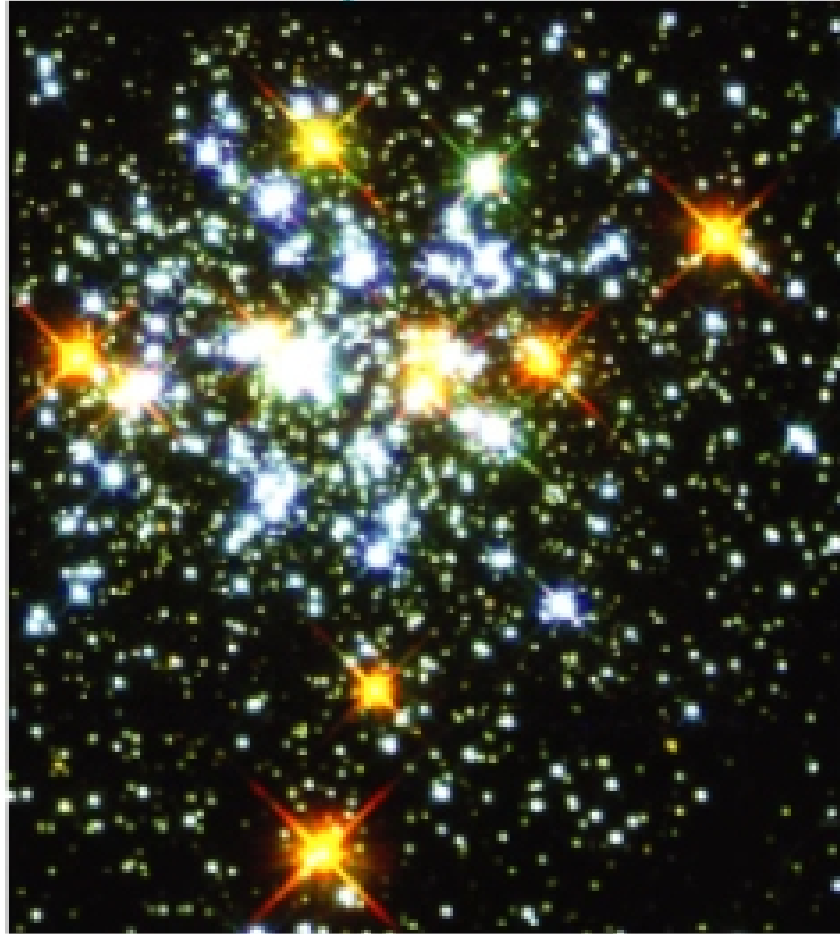


## ANNOUNCEMENTS 11/09/11

- C.L.U.E. Thursday evening 11/10/11
- There *WILL* be a question about massive star evolution, and we will answer it today in lecture.
- Survey still open for your indicating the topics you are most unsure of for Monday's exam 3.
- You do have a textbook, and for most of your uncertainties with the various topics, reading the text will help!

# Short visual review of evolution - sun-like star

## Death sequence of the Sun



QuickTime™ and a  
decompressor  
are needed to see this picture.

## Understanding stages of low-mass star death

Radius of the star turning into a red giant is increasing due to the great increase in luminosity being provided by the fusion occurring in a shell around the core.