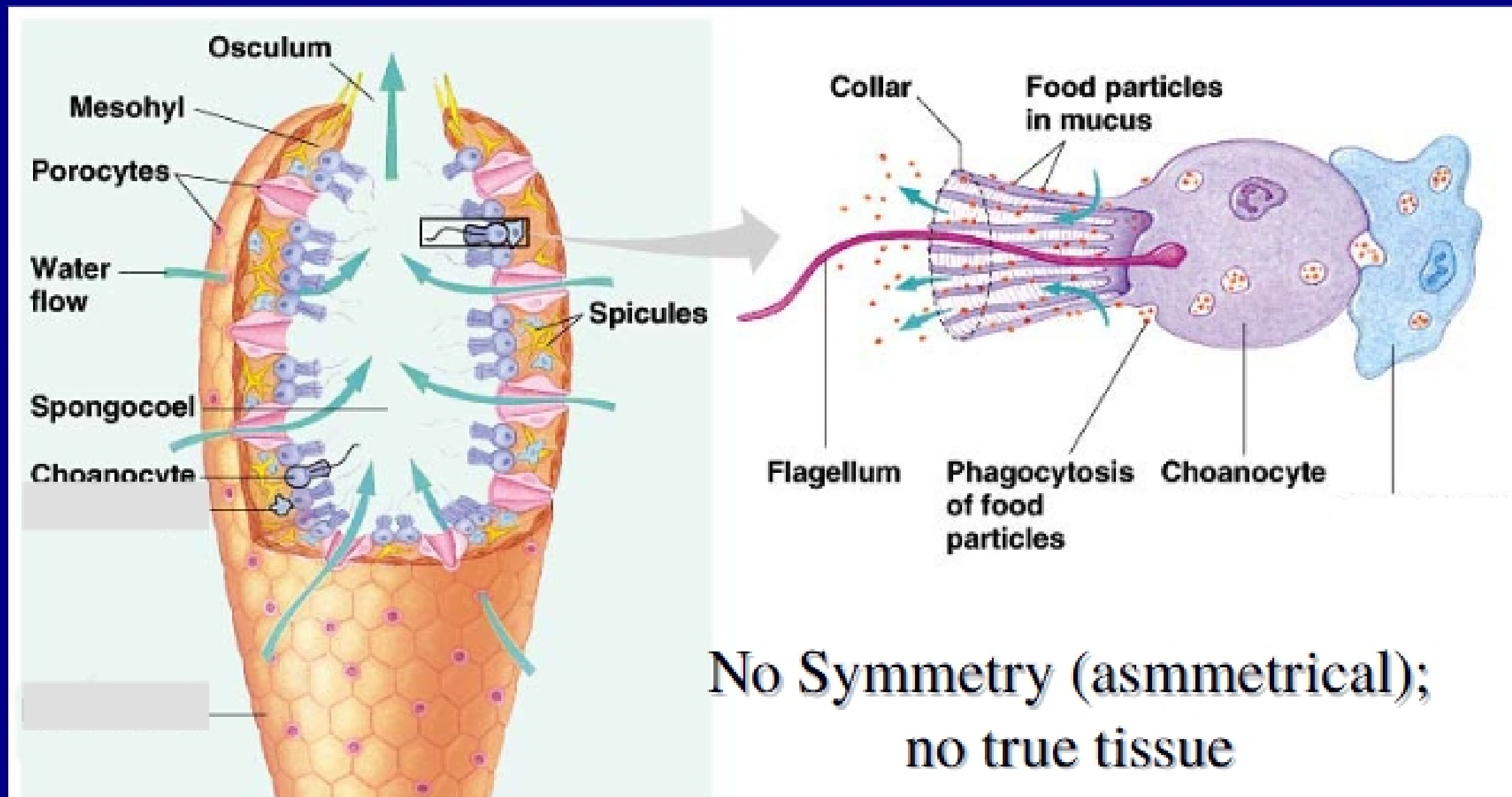


Lab 7:  
Animals I: Porifera,  
Radiata, and  
Introduction to  
Bilateria

# Part A: Sponges (Phylum Porifera)

- **video**
- **spongin (collagen)**



## **Task A-1: Sponges (Phylum Porifera)**

- **Slide: *Scypha* – look for holdfast, osculum**
- **Slide: sponge spicules**
- **body types: simple, intermediate, complex – draw arrows on Fig. 7-3; look at specimens**