

Announcements

- Assignment #2 is due on 9/18 @ 9am
 - To complete assignments, go to Sakai
 - Click on PSYC100 tab > Test & Quizzes
- Study Guide for Exam #1 has been posted
 - Resources > Study Guides folder

i>clicker!

Andrea suffered a brain injury. She now has trouble walking straight and maintaining balance. What part of the brain was likely damaged?

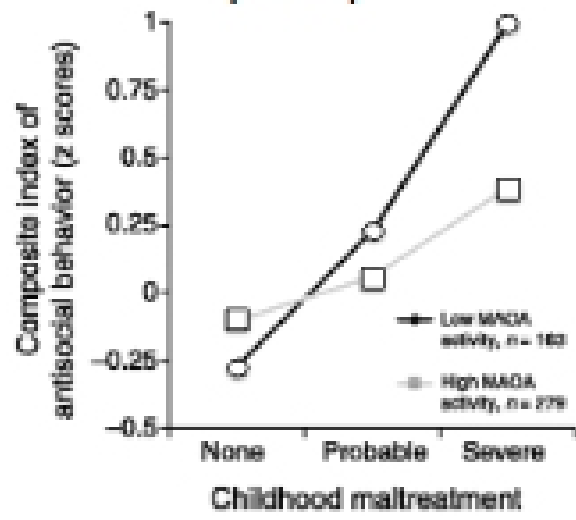
- A. Cerebellum
- B. Brain stem
- C. Amygdala
- D. Cerebral cortex

Genetics!

- Thinking back to the philosophical foundations of psychology...
 - What debate plays a role in understanding genetics in psychological science?
- What is the primary viewpoint today?

Genetics! Twin studies

Gene by Environment Interaction (G x E)



Brain Plasticity & Strength of Connections

- The notion of plasticity is an ultimate example of the fact that nature and nurture influence each other!

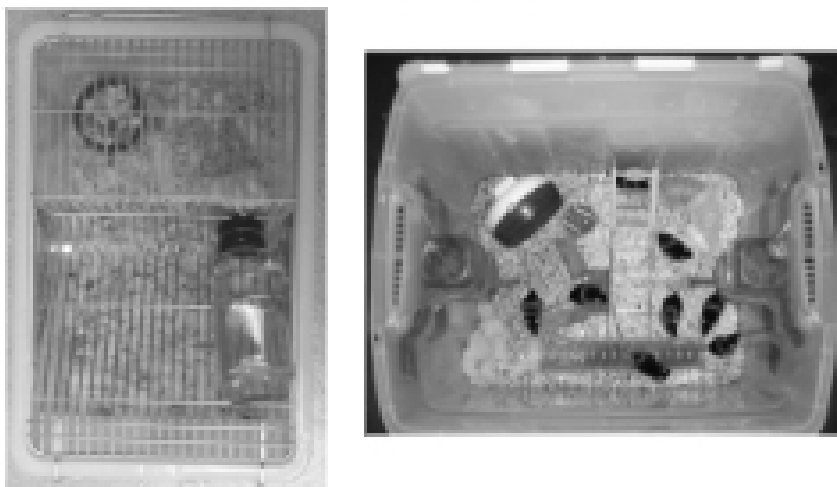


Brain Plasticity & Strength of Connections

- The notion of plasticity is an ultimate example of the fact that nature and nurture influence each other!
- Brain development does not only occur during childhood – it's a lifetime thing!
 - But there are critical periods...



Brain Plasticity & Strength of Connections



Think-Pair-Share

- Create a mini-summary of key ideas/concepts about Biology & Behavior
