

## Biology & Behavior

PSYC 100  
Fall 2013

---

---

---

---

---

---

---

## Announcements

- Feedback on Assignment #1 should be released as of this morning
  - Review questions, your responses, the correct response
- Assignment #2 will be released on Sakai by tonight
  - It's due on 9/18 @ 9AM
- Thank you for some great forum discussions!!

---

---

---

---

---

---

---

## In the News...

- There's still much to learn about our brain and what happens when we injure it!
- Comments from Assignment #1 regarding the NFL and concussions

---

---

---

---

---

---

---

### i>clicker Review

- True or False?
  - The use of brain imaging methods (e.g., fMRI, PET) indicates that researchers can make strong, causal statements.

- A. True
- B. False

---

---

---

---

---

---

---

---

### i>clicker Review

- The Assignment #1 readings referenced some research findings regarding concussions. Think about the ScienceDaily reading regarding the tau protein.
- What type of research designs were these findings?

- A. Observational
- B. Correlational
- C. Experimental

---

---

---

---

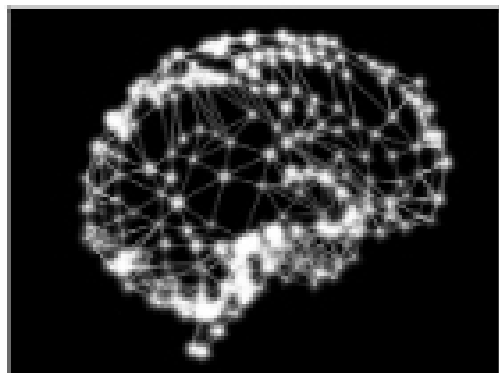
---

---

---

---

### Nervous System



---

---

---

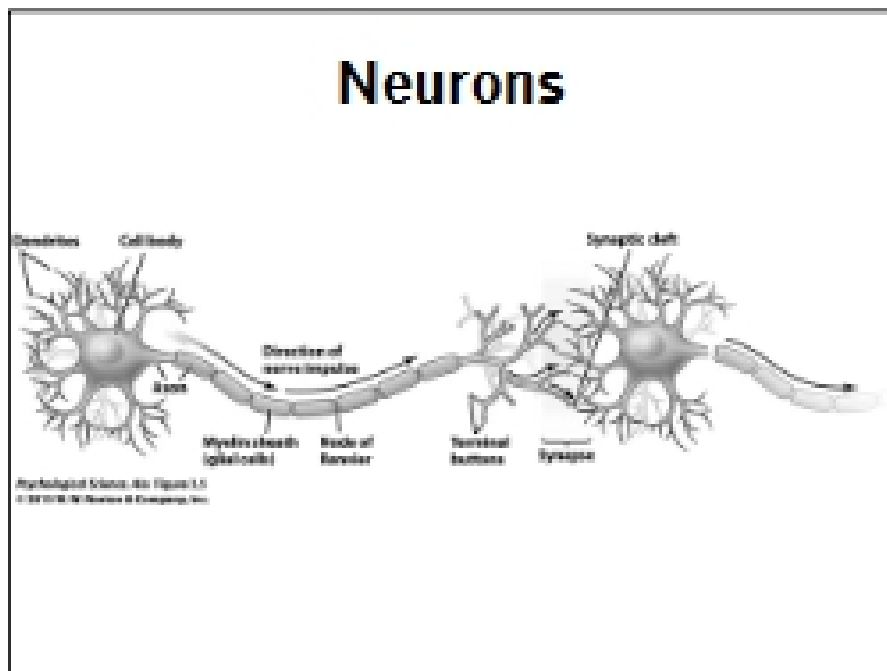
---

---

---

---

---



---

---

---

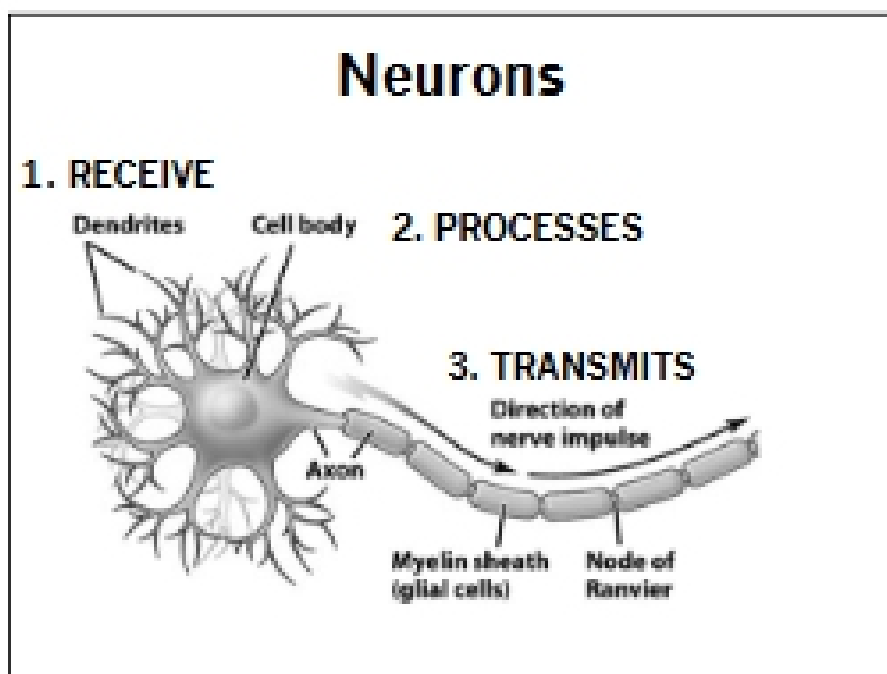
---

---

---

---

---



---

---

---

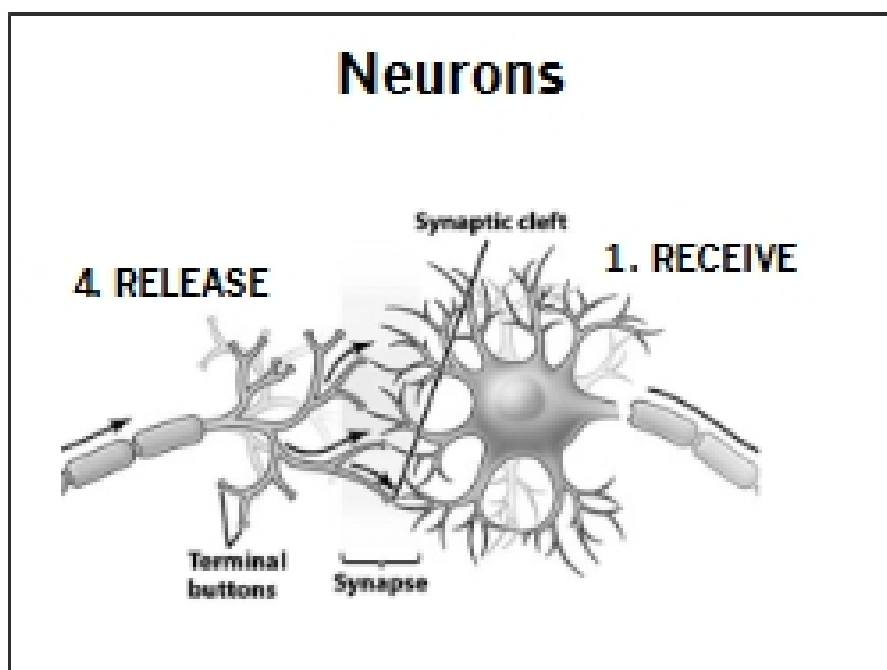
---

---

---

---

---



---

---

---

---

---

---

---

---