

More great

Student questions of the day....

Q: How does the embryo know WHERE to form a tube or other structure?

A: There is a connection between positional information and the formation of specific structures. The details are poorly understood.

Q: What is the relationship between ECM ligand and cellular receptor interaction and focal adhesion?

A: The ligand/receptor interaction causes the focal adhesion.

Thinking about a course VII major/dual degree?
Interested in the minor in Biology Program?
Are you prepared!

Biology

Open House

for freshmen and others

Tuesday, April 10 • 4-5pm • 68-180
Thursday, April 12 • 7-8pm • 68-180*

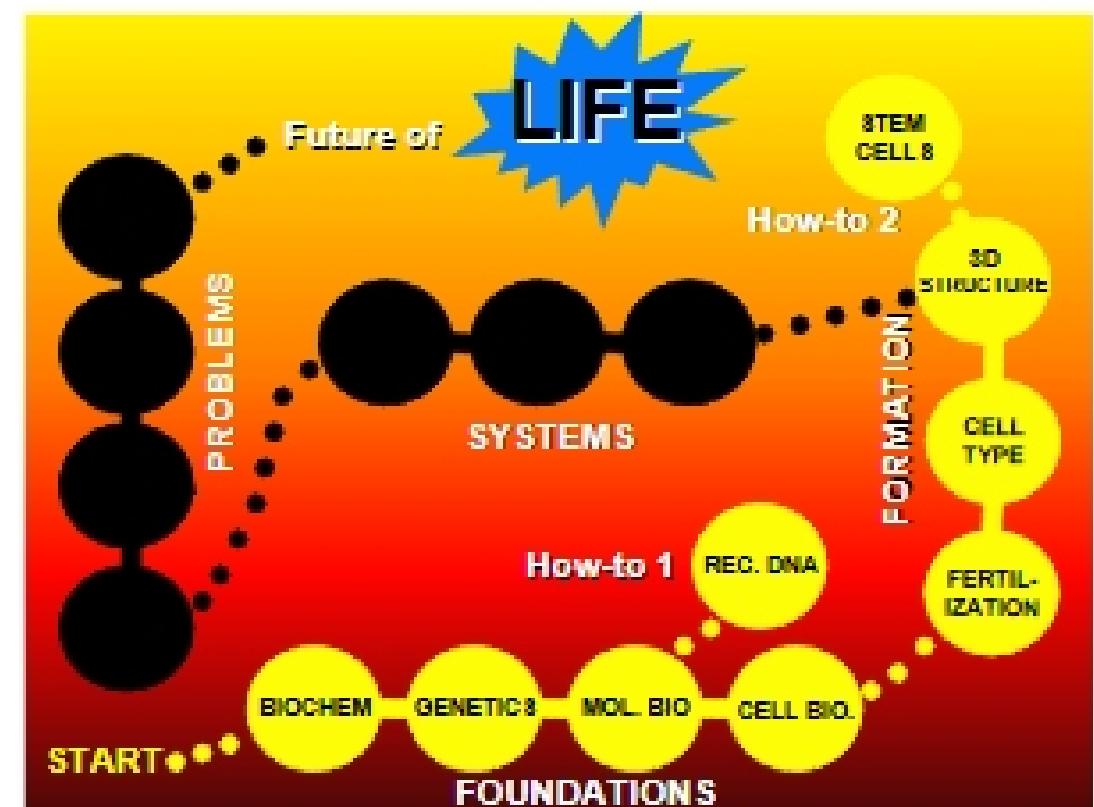
*Enter Bldg 68 across from State Center door closest to Bldg 66.

Get the information you need about the
Major in Biology (VI or VII)
and **Minor in Biology** Programs

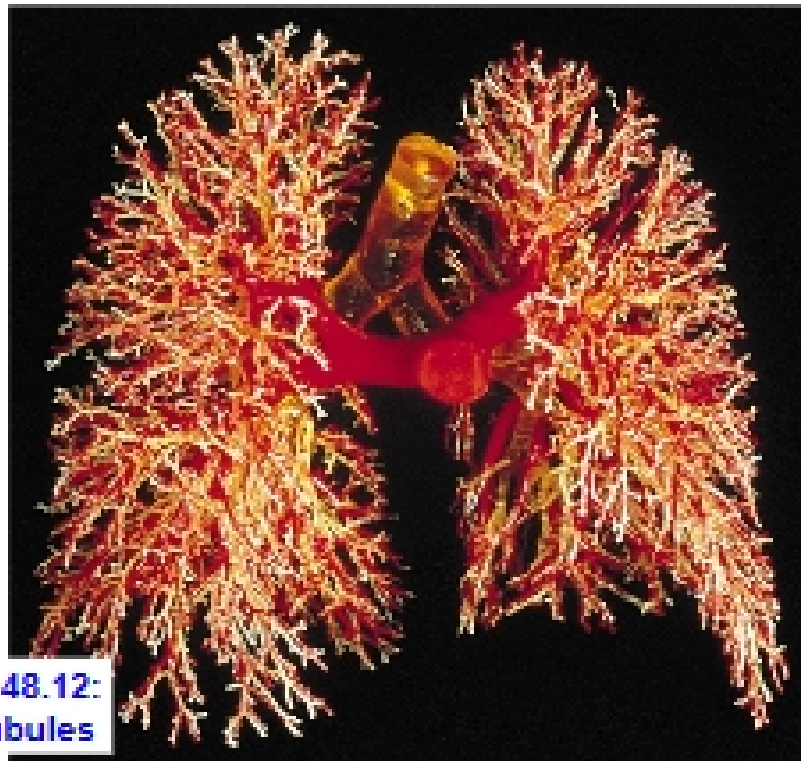
Refreshments will be served.

7.013
4.09.07

How-to 2
Stem Cells



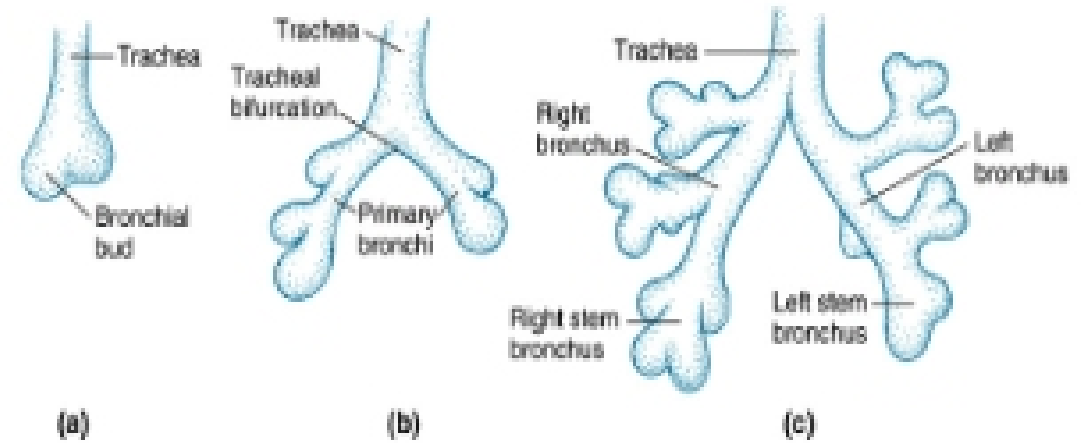
17



Purves 48.12:
Lung tubules

© Science Photo Library/Photo Researchers, Inc.

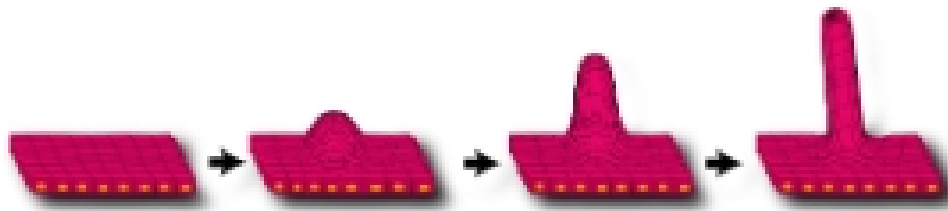
18



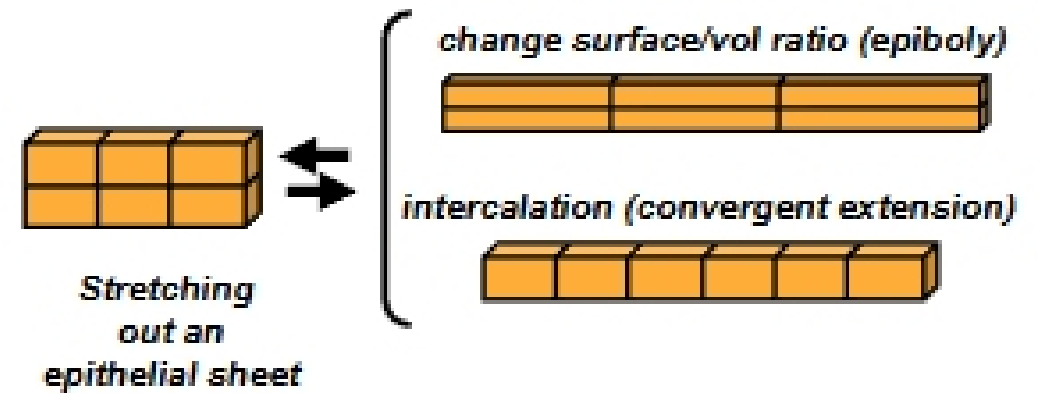
Lung tubule branching: initial steps

19

An epithelial sheet can extend to form a tube
Example: primary tracheal tubules

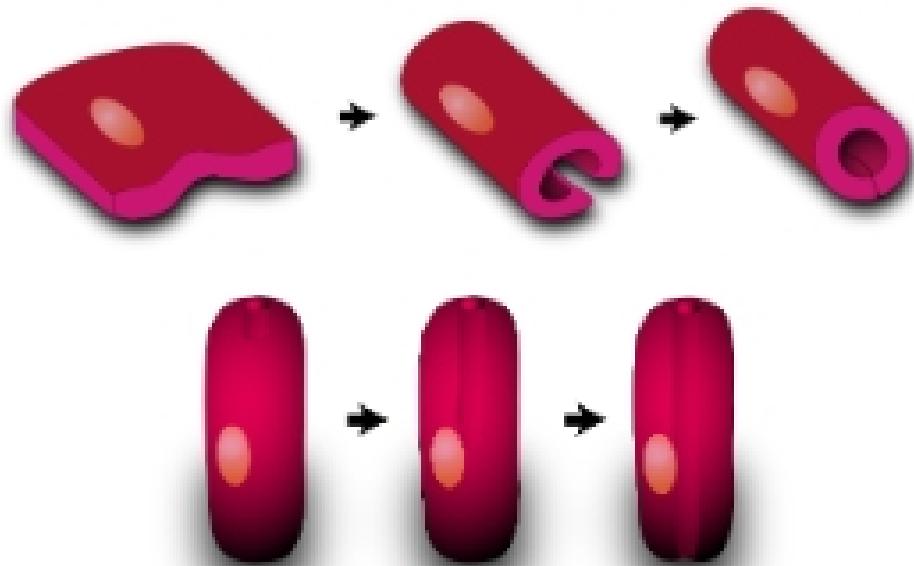


19a

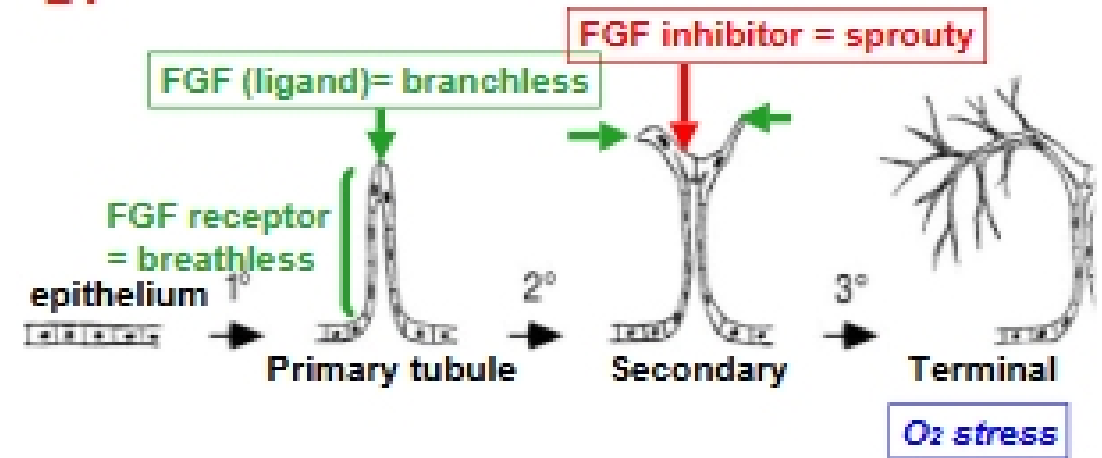


20

Single cells can roll or hollow into tubes
Examples: secondary and terminal tracheal tubules



21



Primary tracheal outgrowth and branching (*Drosophila*)
See Purves 48.5

What are stem cells?

