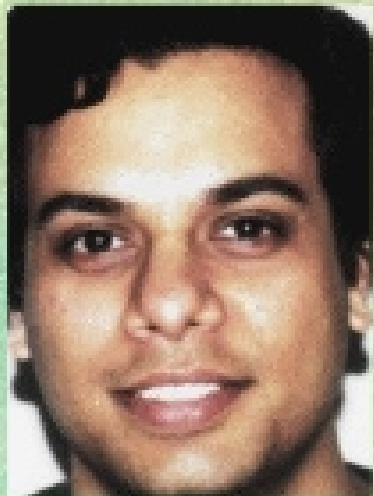


Face Recognition

BIOM 426

Instructor: Natalia A. Schmid



Imaging Modalities

Processing Methods

February 27, 2004

1

Applications

- Law enforcement (mug shot identification)
- Verification for personal identification (driver's licenses, passports, etc.)
- Surveillance of crowd behavior



Mug-shot

Face biometric

Macro elements: the mouth, nose, eyes, cheekbones, chin, lips, forehead, and ears.

Micro elements: distances between the macro features or reference features and the size of features.

Heat radiation