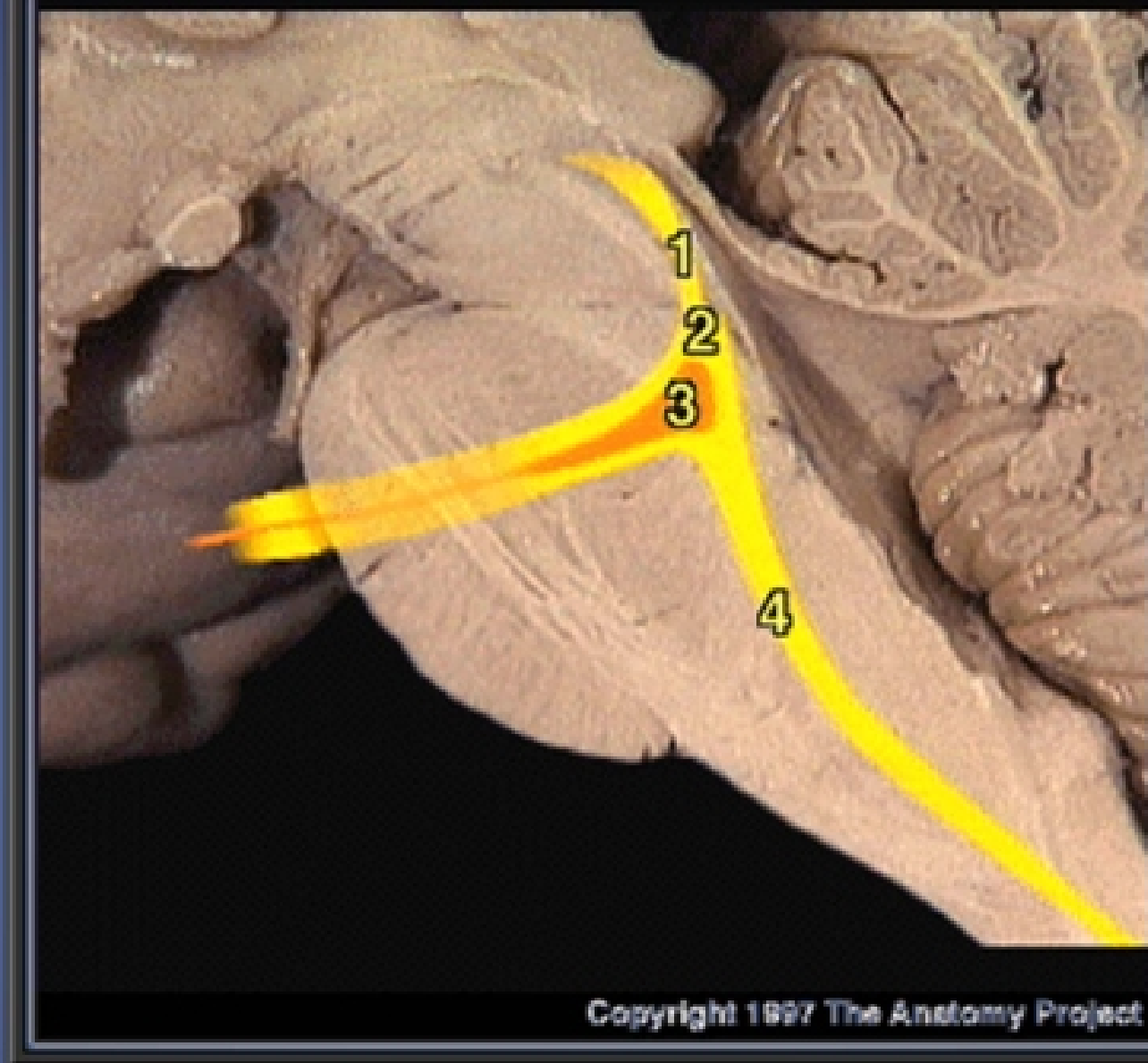


LONG TRACTS OF THE BRAINSTEM



David E. Blask, Ph.D., M.D.
Department of Structural and Cellular Biology
Medical Neuroscience
Tulane University School of Medicine

Long Tracts of the Brainstem

Connect higher structures (e.g., cortex) with Lower structures (e.g., spinal cord)

- Corticospinal Tract
- Dorsal Column/Medial Lemniscus System
- Anterolateral system (Spinothalamic)
- Trigeminal pathways

Corticospinal Tract

Function: voluntary motor

Extent: motor cortex to spinal cord travels
through all 3 divisions of brainstem

85% crossed

Decussation: low medulla,
“decussation of the Pyramids”