

Types of graft rejection

Hyperacute -extremely rapid rejection (hours)
occlusion of graft vessels

Acute - days to weeks after transplant
cell-mediated immune response

Chronic -months to years after transplant
graft vascular disease

Hyperacute rejection is mediated by pre-existing antibodies against donor antigens

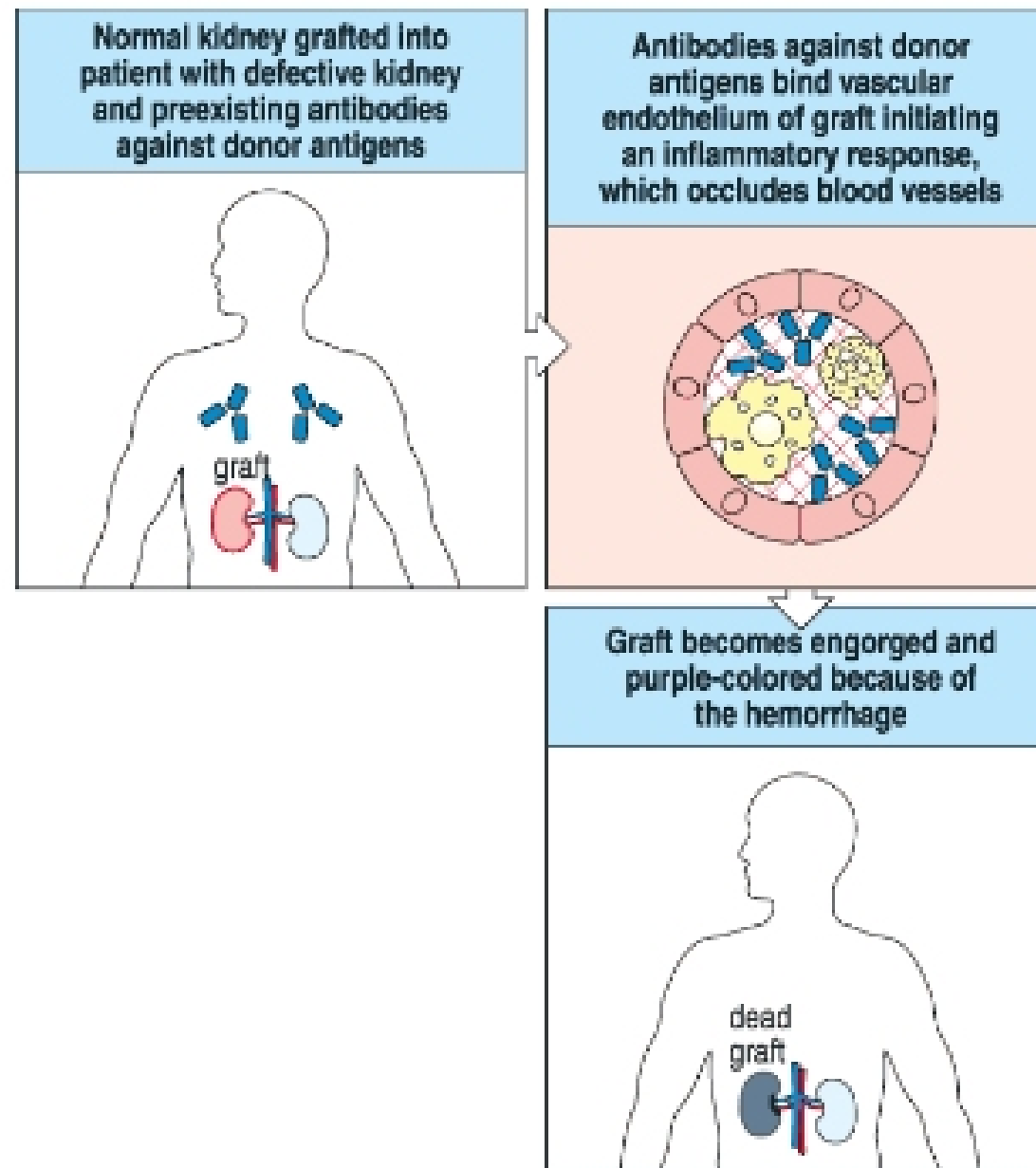


Fig 13.27 © 2001 Garland Science