

Chapter 12: Muscle

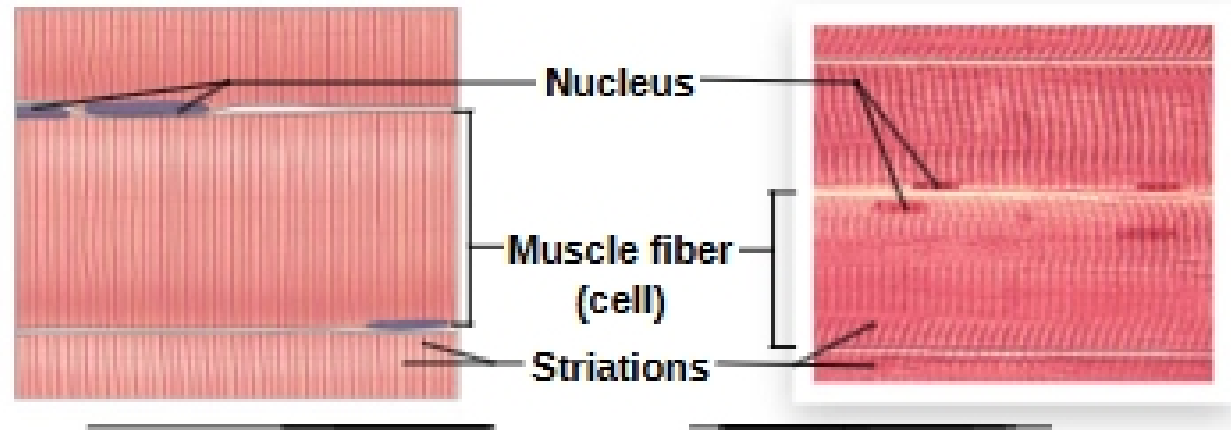
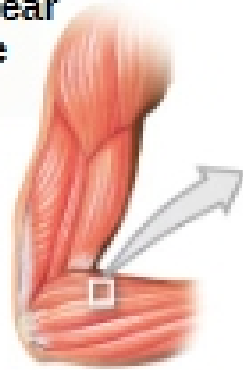
- Skeletal muscle
- Mechanics of body movement
- Smooth muscle
- Cardiac muscle

Muscle Terminology

Muscle Terminology		Table 12.1
General Term	Muscle Equivalent	
Muscle cell	Muscle fiber	
Cell membrane	Sarcolemma	
Cytoplasm	Sarcoplasm	
Modified endoplasmic reticulum	Sarcoplasmic reticulum	

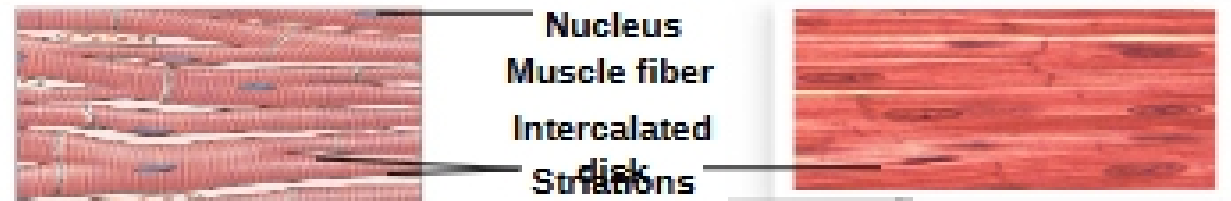
Muscle

(a) Skeletal muscle fibers are large, multinucleate cells that appear striped or striated under the microscope.



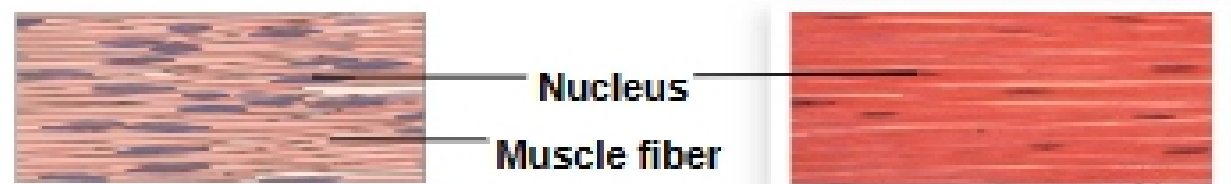
© 2013 Pearson Education, Inc.

(b) Cardiac muscle fibers are also striated but they are smaller, branched, and uninucleate. Cells are joined in series by junctions called intercalated disks.



© 2013 Pearson Education, Inc.

(c) Smooth muscle fibers are small and lack striations.



© 2013 Pearson Education, Inc.