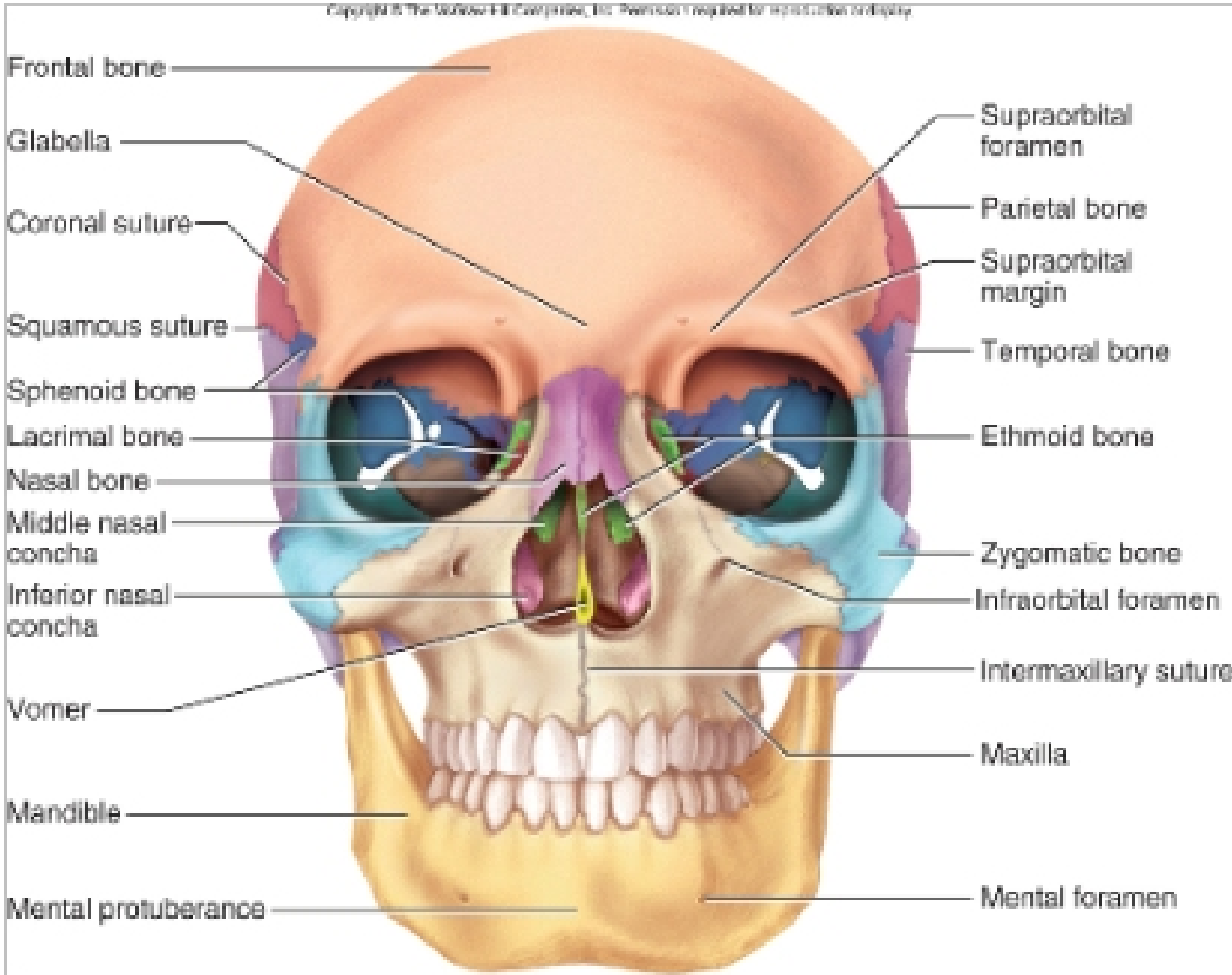
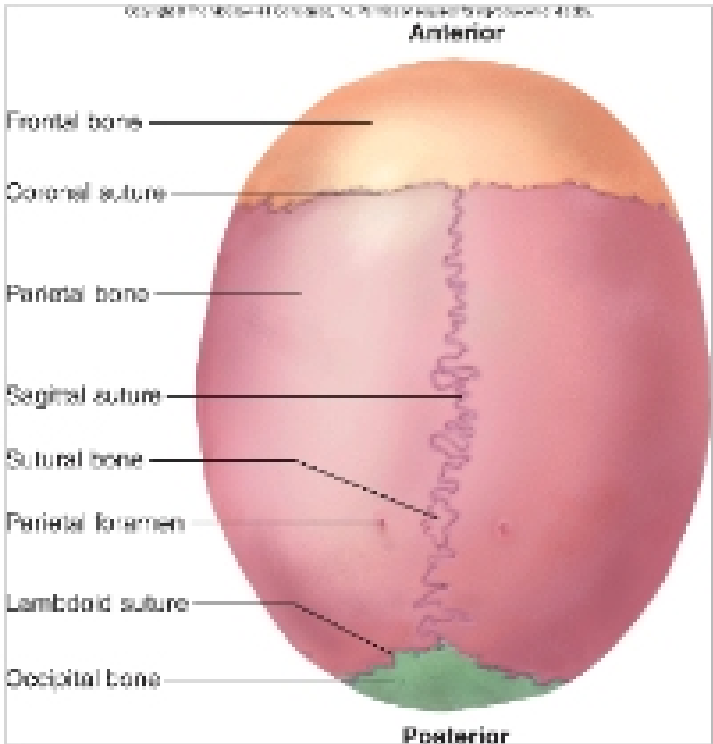


Class Notes  
3/6/12  
(With figures used in class)



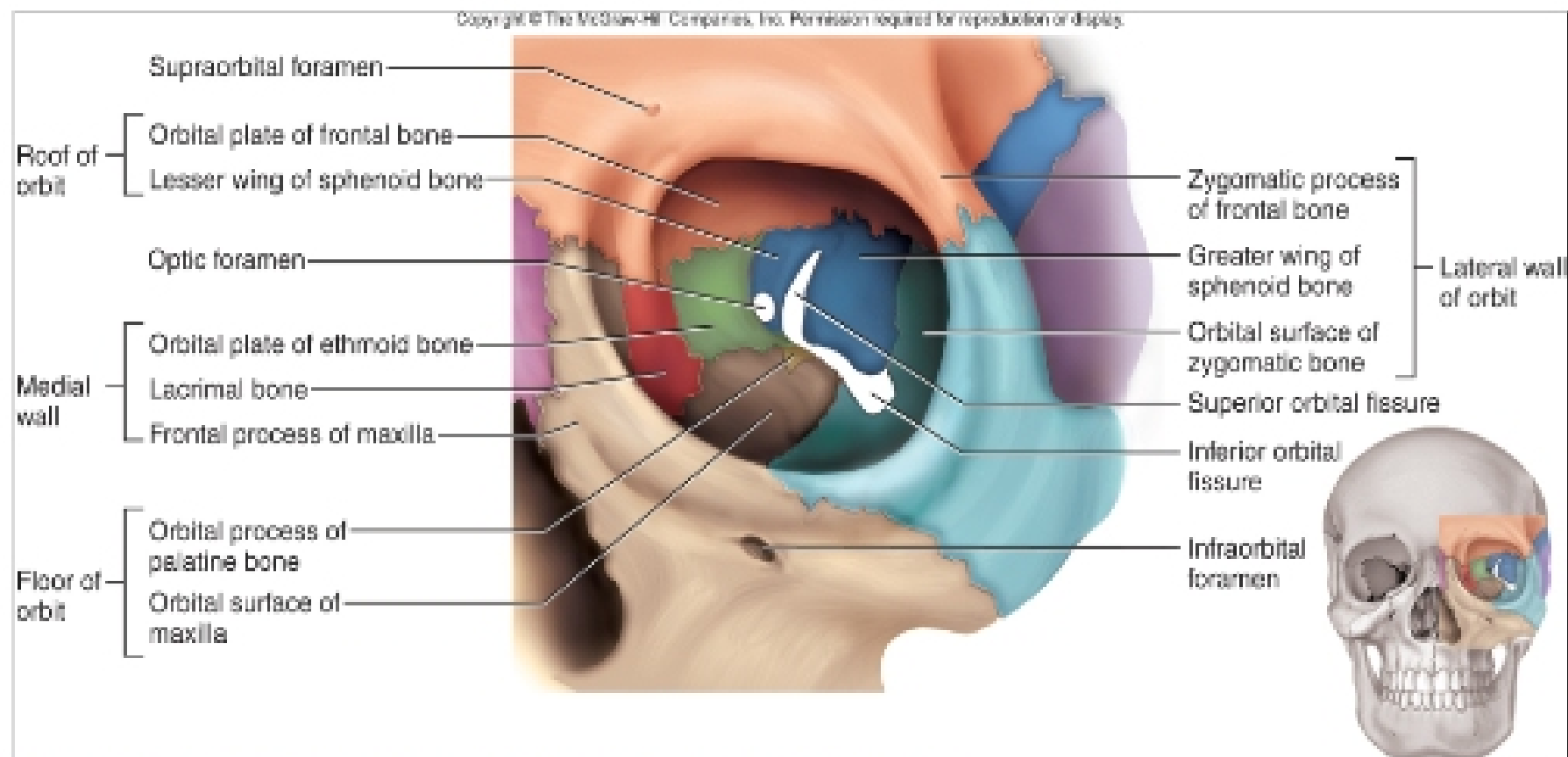
[Fig 8.3] Be able to label all sutures and bones.

- **Sutures** (of cranium; cranial sutures)
  - coronal
  - sagittal
  - lamdoid
  - squamos



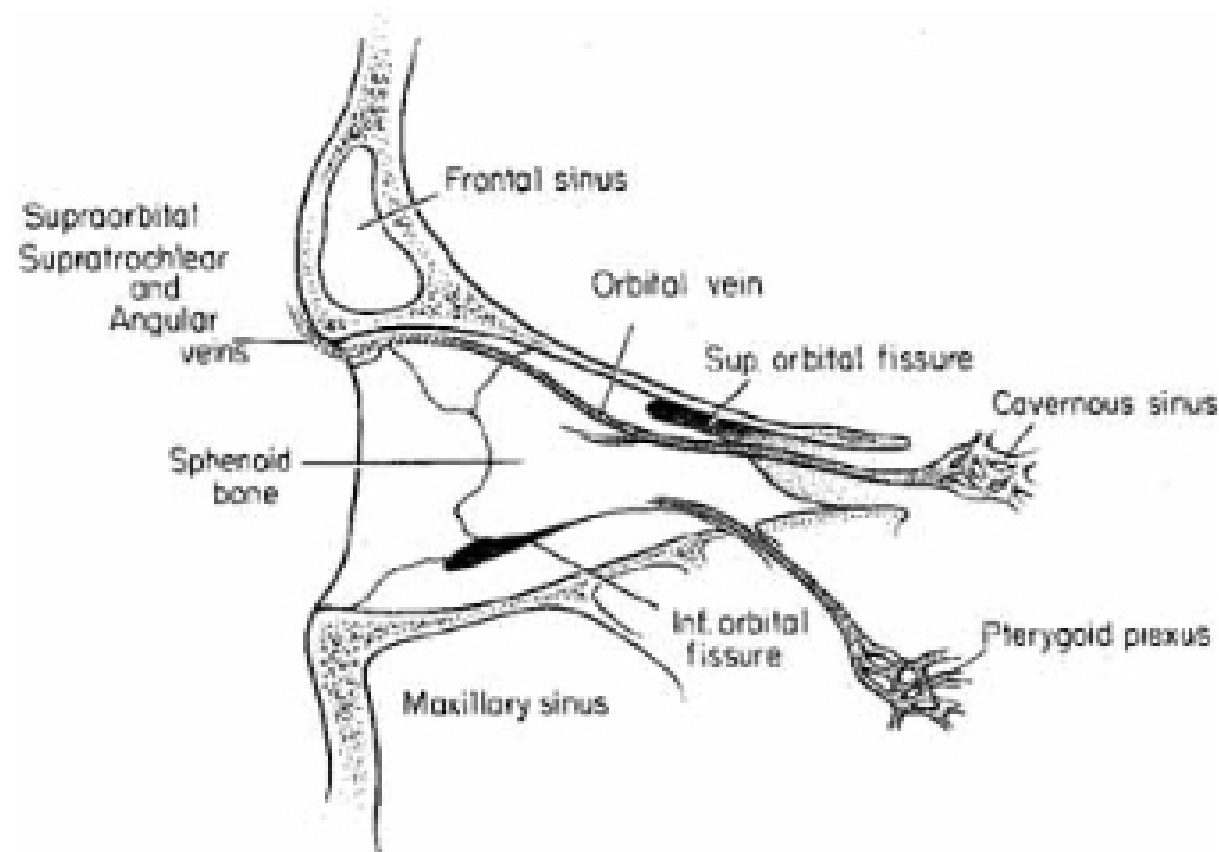
- **Bones** mentioned in class

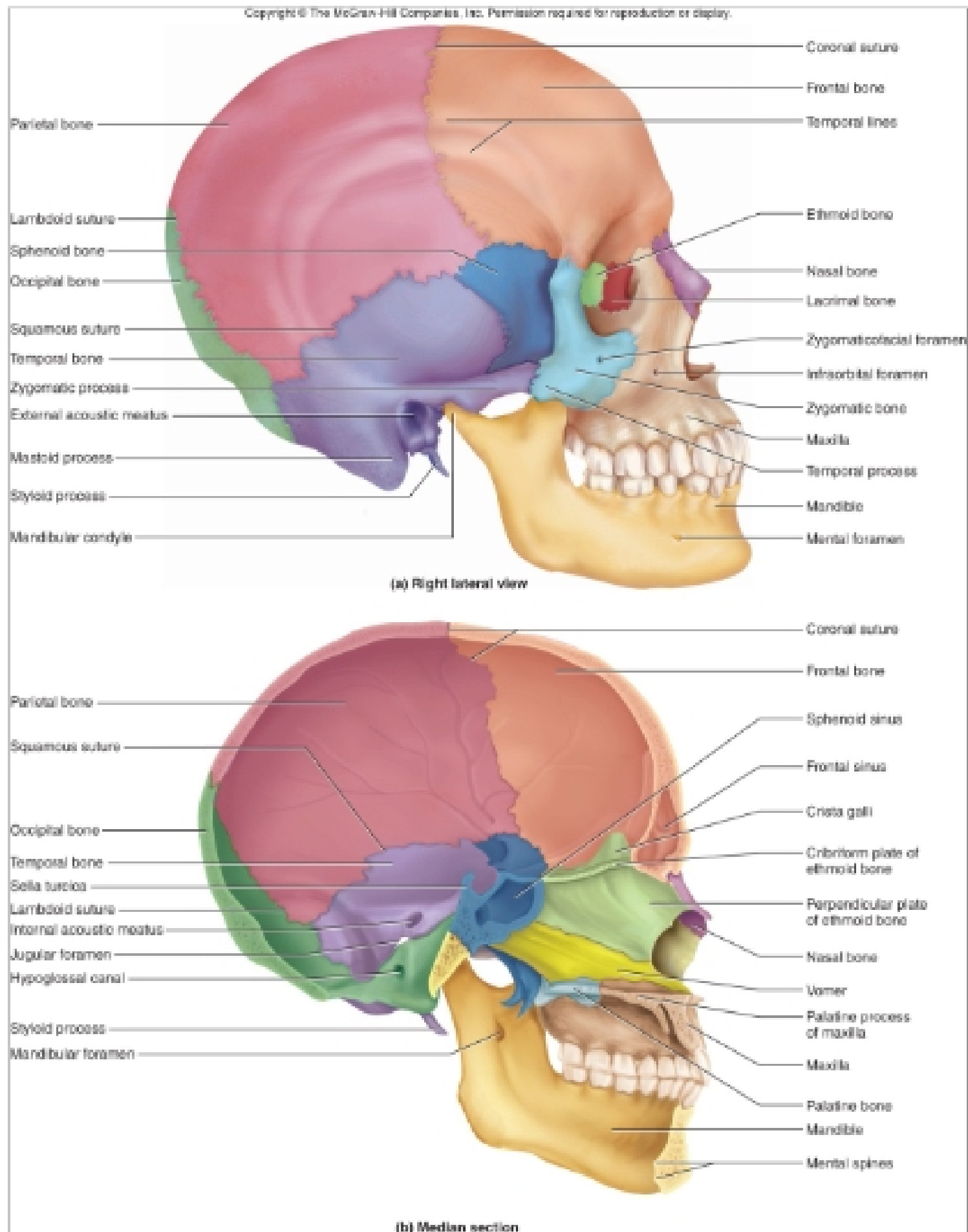
- vomer
- nasal bone
- supraorbital foramen
  - just above optic
- inferior (2), superior, medial- nasal conchii
  - *part of ethmoid bone*



**[Fig 8.7]** Know all bones contributing to orbital bone

- Allowing nerves to pass through
  - inferior orbital fissure
  - superior orbital fissure
  - optic foramen...



**[Fig 8.4b]****- Sella Turcia**

- of sphenoid bone
- houses pituitary gland

**[Fig 8.4a]****- Styloid process**

- sharp point
- stylohyoid muscle attaches styloid process to hyoid bone.