

## ▮ Cai Guo Qian

- East River, Manhattan-Queens Project:
  - Temporary **Transient Rainbow** Explosion art
  - Rainbow image
    - Designed to heal (after 9/11)
    - Goddess Nu-Wa sealed/healed the sky
    - Stones of color thrown across the heavens
    - Circular symbol PI - universe

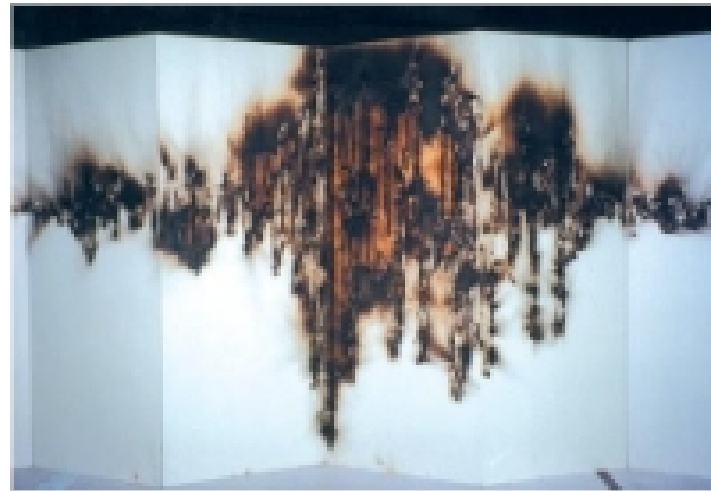


- Gunpowder
  - Fleeting - Transitory - Momentary
  - Qualities of life
- **Drawing for Transient Rainbow**
  - "As a Chinese you are always involved in history it is an obligation I learned from my father who is art historian" - Cai Guo-Qiang
- Cai Guo-Qiang was born in 1957 in Quanzhou City, China.
- Cai was trained in stage design at the Shanghai Drama Institute from 1981 to 1985.



- **The Mark of 921**

- o 90-second seismic wave recorded on 921
- o Taichung, Taiwan, 2000



□ **Gun powder**

- The power to ward off evil
- Impact from the sound
- Physicality of the heat.
  - o Mystical properties Gun powder in Chinese means “fire medicine”
- Used in alchemy, the Taoists discovered it when they were looking for ways to preserve their longevity.

□  
□

• **Borrowing Your Enemy’s Arrow, 1998**

- o Guo-Qiang
- o The idea of using the strength of one’s opponents to empower oneself
- o The arrows symbolize wound and pain, but at the same time, the boat is uplifted; the feathers of the arrows enable it to take flight”



□

- **Head On**

- Berlin Germany



□

□

□ **Art** doesn't have that much influence to shape things

□ Sometimes what artists create helps people see other possibilities, which gives them hope.

□

□ But art is not a tool for social transformation - otherwise it would be the same as how communists in China used art for propaganda.

□

□ **Color Wheel**

- Color - a direct function of light.
- Spectrum - band of colors resulting from sunlight passing through a prism
- Color Wheel
  - Primary Colors
    - Red
    - Yellow
    - Blue
  - Secondary Colors
    - Orange Green Violet

□

□ Each primary or secondary color is a **Hue**.

□

□ Adding white to a Hue results in a **Tint**.

□

□ Adding black to a hue results in a **shade**.

□