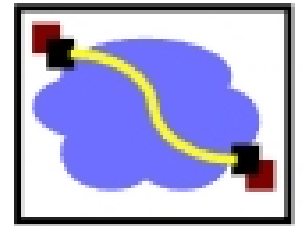




# 15-441 Computer Networking

## Lecture 8 – IP Addressing and Forwarding

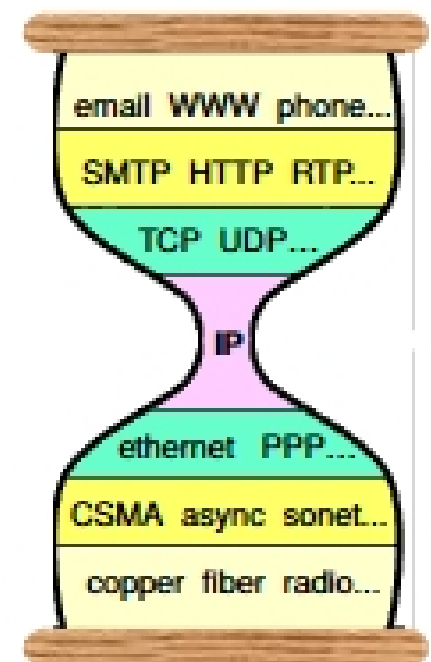
# Internet Protocol (IP)



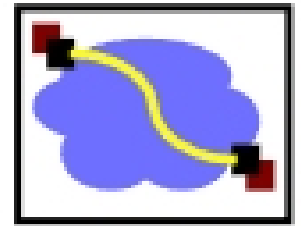
- Hour Glass Model
  - Create abstraction layer that hides underlying technology from network application software
  - Make as minimal as possible
  - Allows range of current & future technologies
  - Can support many different types of applications

**Network applications**

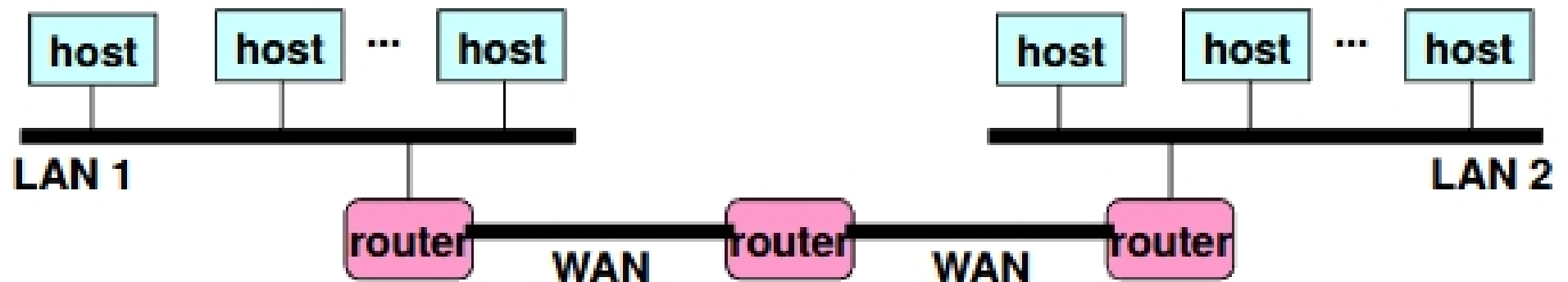
**Network technology**



# What is an Internetwork?



- Multiple incompatible LANs can be physically connected by specialized computers called *routers*
- The connected networks are called an *internetwork*
  - The "*Internet*" is one (very big & successful) example of an internetwork



**LAN 1 and LAN 2 might be completely different, totally incompatible LANs (e.g., Ethernet and ATM)**