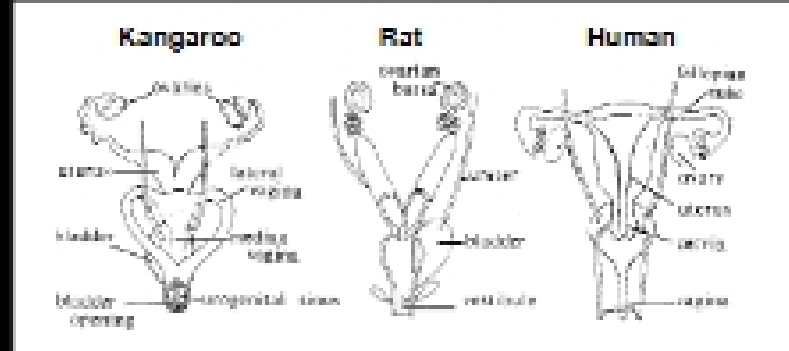


Animal/Dairy Science 434

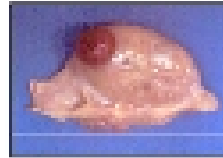
Lec 2:

Female comparative anatomy; History of Reproductive Physiology



Ovarian Differences

Cow



Mare



Sow

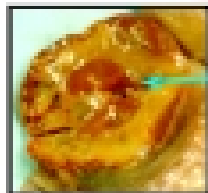


Cow, Sow, Ewe, Human

- Cortex on outside
- Ovulation can occur on any point of the ovary

Mare

- Inversion of the cortex and medulla.
- Ovulation occurs at the Ovulation Fossa



Internal CL

Mare

Cow

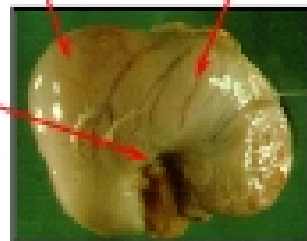


Sow

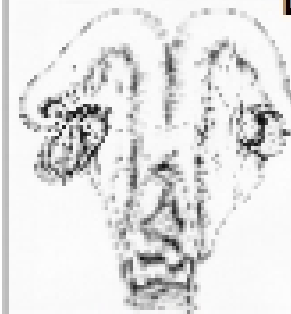


Preovulatory tertiary follicle

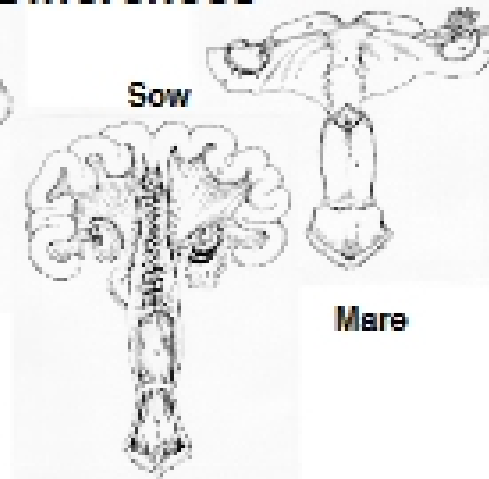
Blood vessels and connective tissue in medulla



Uterine and Cervical Differences



Cow



Mare

Sow

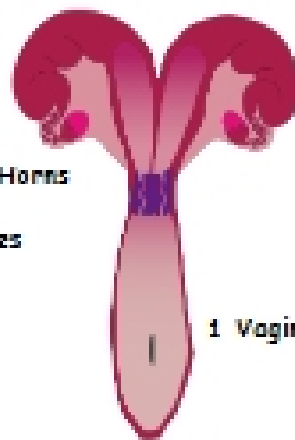
Duplex

Opusum



2 Vaginas

Rabbit, Mouse



1 Vagina

2 Uterine Horns

2 Cervixes

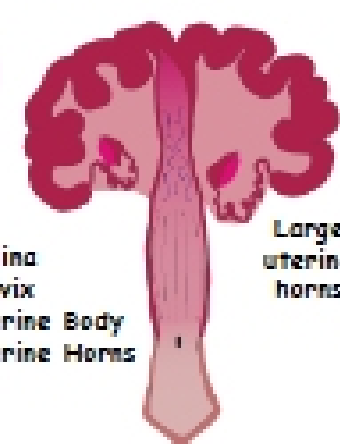
Bicornuate

Cow



Smaller uterine horns

Sow



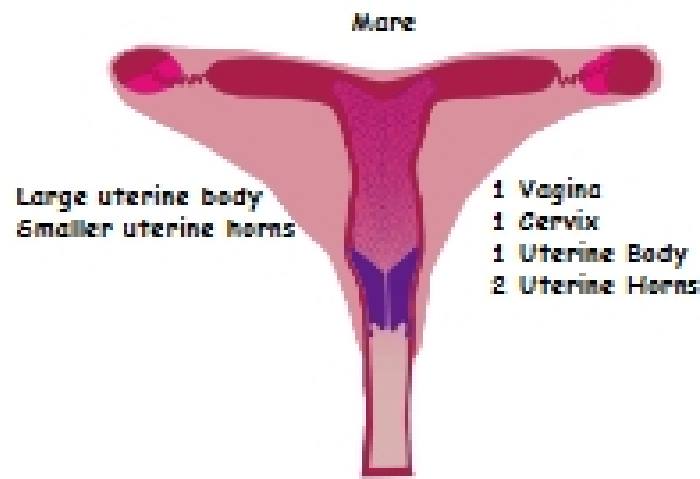
Large uterine horns

1 Vagina
1 Cervix
1 Uterine Body
2 Uterine Horns

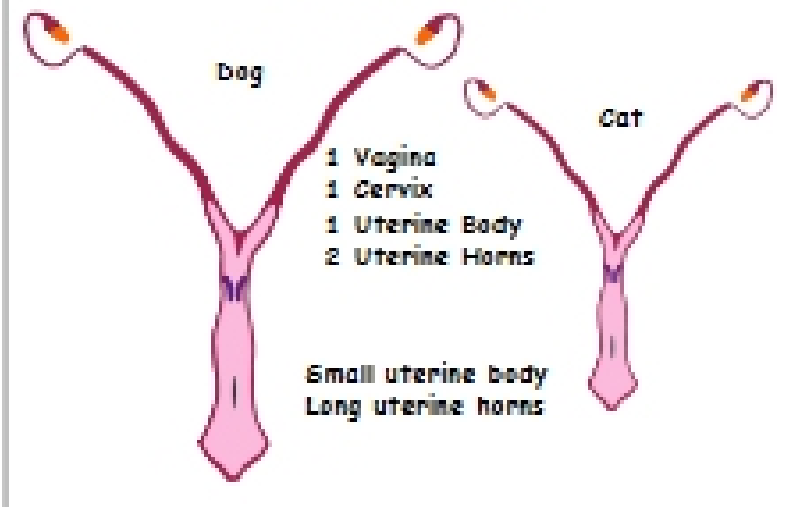
Ewe



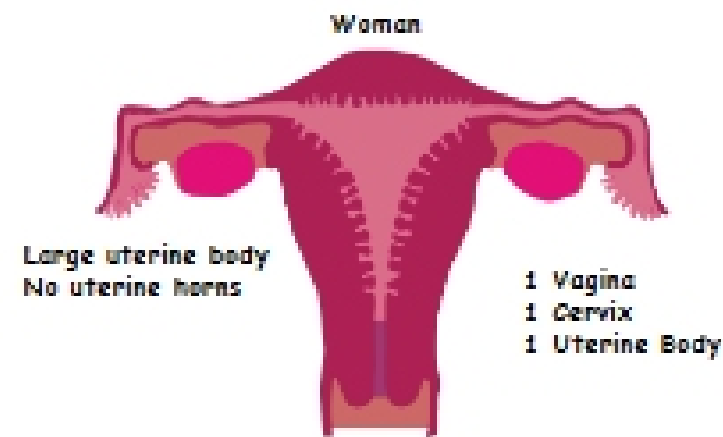
Bicornuate



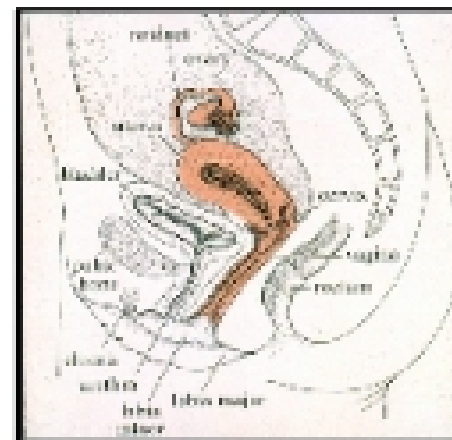
Bicornuate



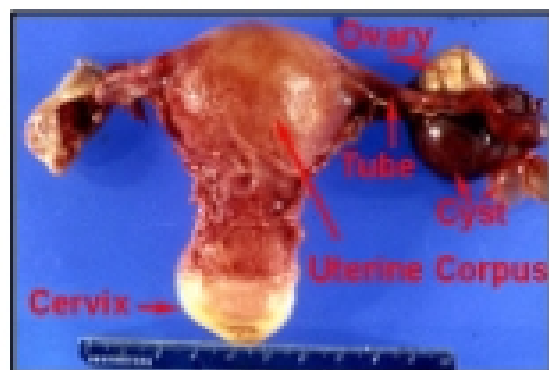
Simplex



Human Tract



Human Tract



A 47-year old woman underwent a hysterectomy for excessively heavy menses. She had previously had four normal deliveries. This structure was removed, what is wrong?

