

CHAPTER 13 PART-1, NEURAL CREST CELLS

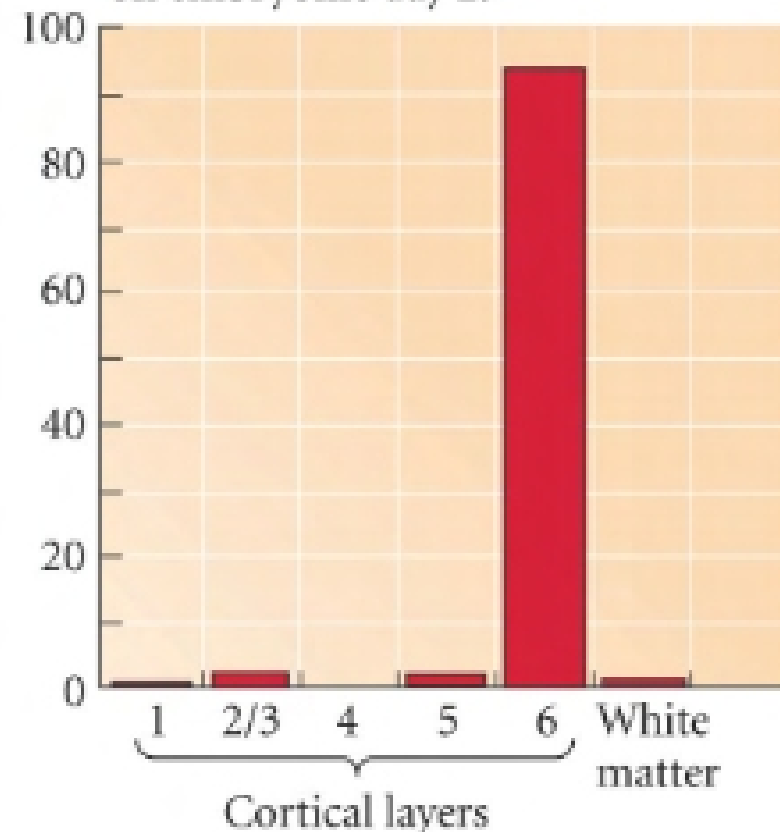
ZOO3603

Determination of cortical laminar identity in the ferret cerebrum

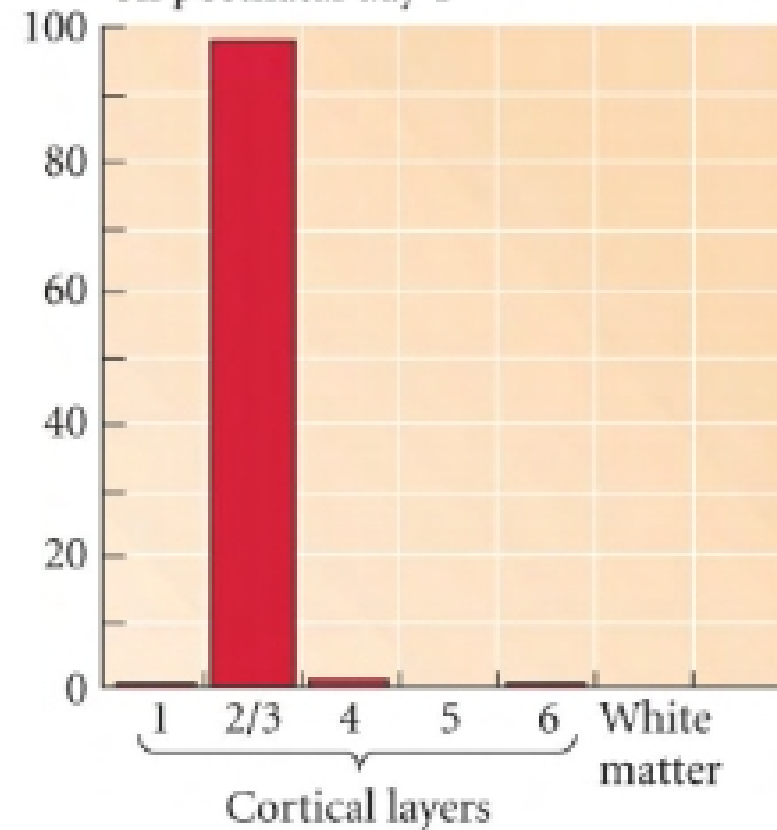
Determination is made during the final cell division

Older neuronal precursors migrate to farther.

(A) [³H]-thymidine administered on embryonic day 29



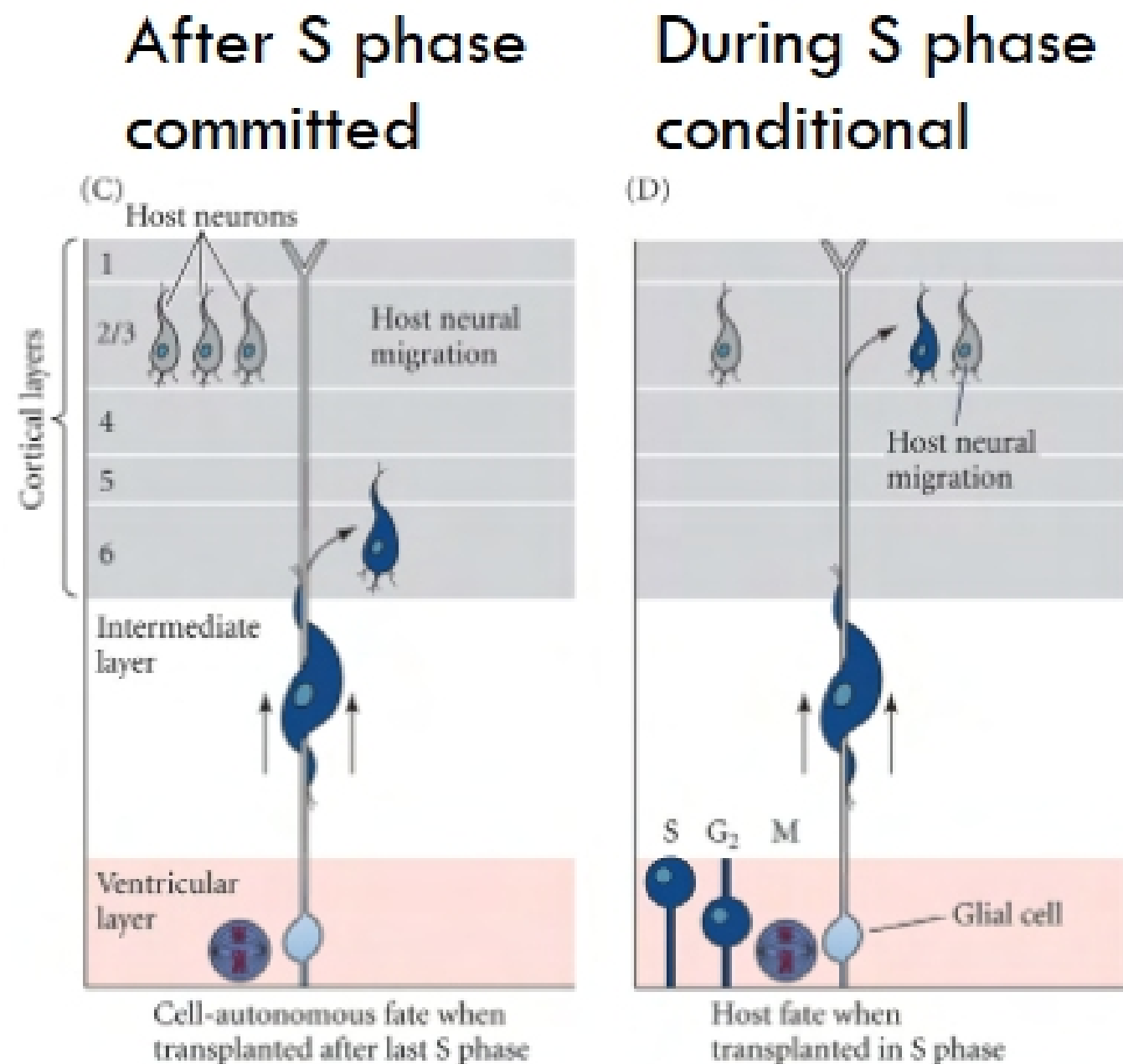
(B) [³H]-thymidine administered on postnatal day 1



Depending on the “Birthday”, the final destination is determined

Determination of cortical laminar identity in the ferret cerebrum

Transplant “early” neuronal precursors into “late” ventricular layer.



Depending on the cell cycle -- Foxg1 gene for layers 4 & 5.