
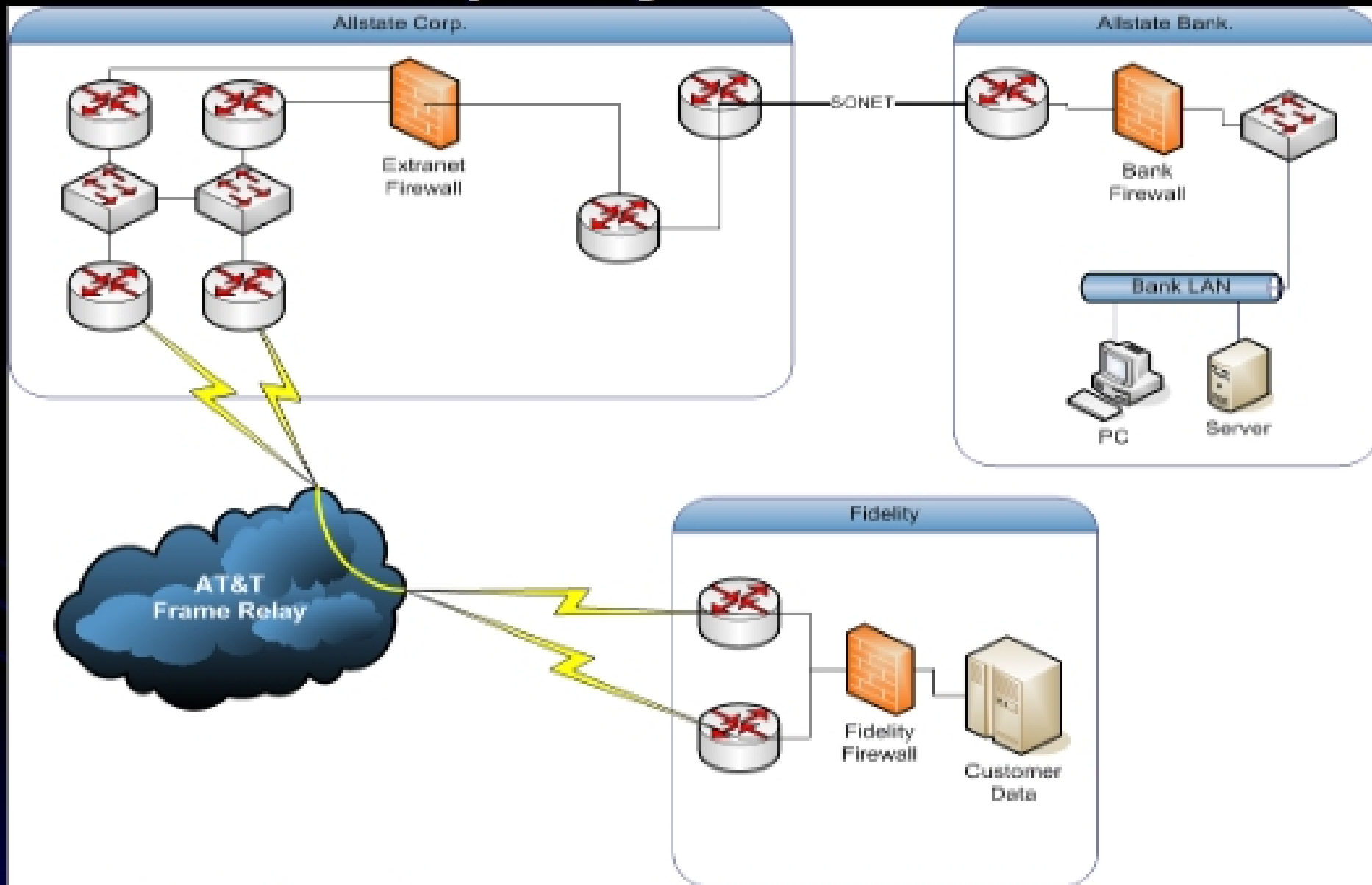


Intra-Company Data Traversal

Protecting Customer Data
from Parent Company



Intra-Company Data Traversal



Auditor: "Can Allstate Corp. capture outbound traffic from Allstate Bank?"

Jason: "Yes" ... "I mean no!" ... "Ah damn!"

Intra-Company Data Traversal

The Business Need

Allstate Bank (AB)

wants to protect its customer data from

Allstate Corp. (ALL)

