



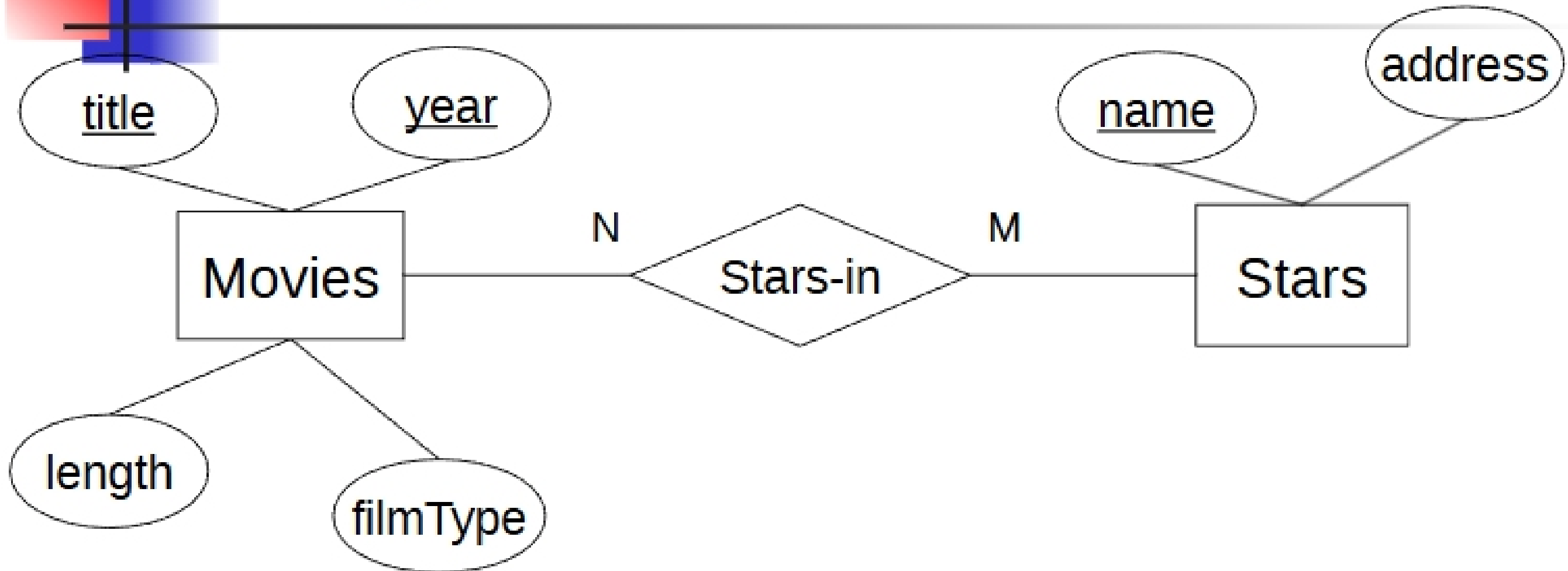
Conversion E/R to Relational

CIS 4301

Lecture Notes

Lecture 6 - 1/31/2006

Sample Movie Database



relationship type into relation (Stars-in) whose attributes are the (s) of Relationship type (if any), and the keys of the involved ent

the keys of the new relations Stars-in?



Conversion Problems

- **Resulting Relations**

Movies(title, year, length, filmType, studioName)

StarsIn(title, year, starName)

Stars(name, address)

- **Shall we combine Movies and StarsIn?**

- StarsIn many-many from Movies to Stars

- **Combined relation:**

(title, year, length, filmType, studioName, starName)

Good design?