

Digestive System



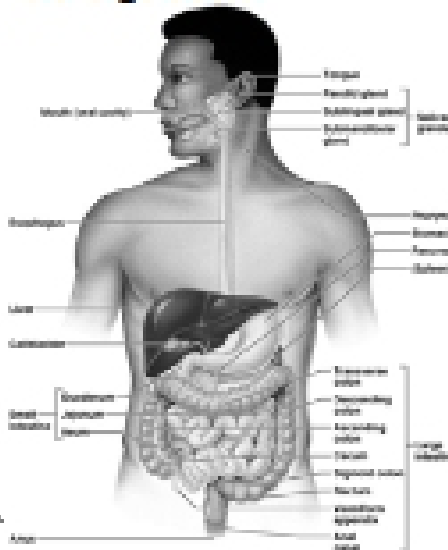
AKA

- G-I Tract
- Alimentary Canal

Overview

- Consists of
- Mouth, pharynx, esophagus, stomach, small intestine, large intestine, anus
- About 30' in length
- Accessory Organs
 - Teeth, tongue, gall bladder, salivary glands, liver and pancreas
 - Glands secrete saliva, bile and enzymes

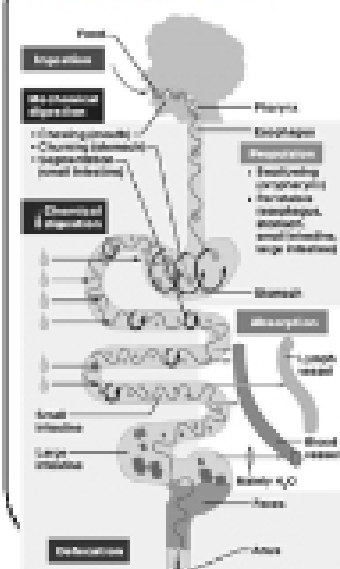
GI System



Process Includes

- Ingestion
- Mechanical – chewing, churning
- Propulsion – swallowing and peristalsis
- Chemical – breakdown via enzymes
- Absorption – transport of end products into blood
- Defecation – elimination as feces

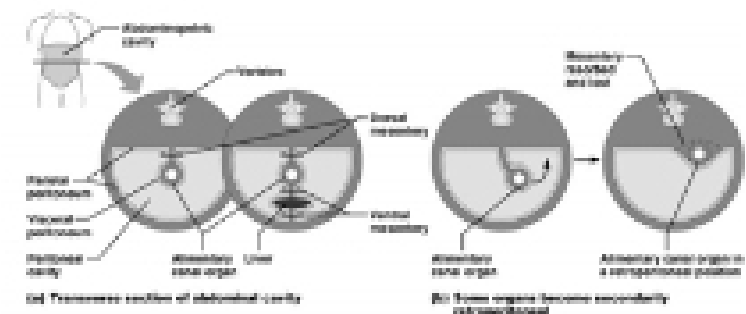
GI Process



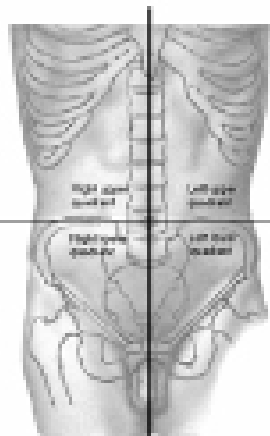
Peritoneum and cavity

- Parietal peritoneum surrounds cavity, lines body wall
- Visceral surrounds organ
- Serous membrane allows organs to glide/expand
- Retroperitoneal refers to organs in the dorsal region
- Peritonitis = inflammation of peritoneum
- Perforation = infection

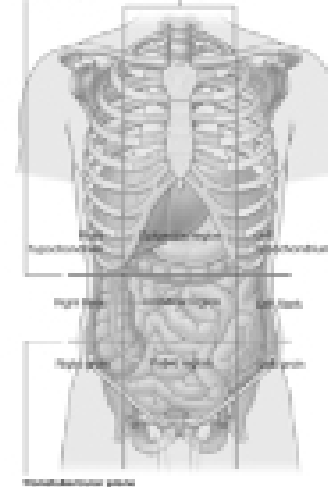
Peritoneum



Quadrants

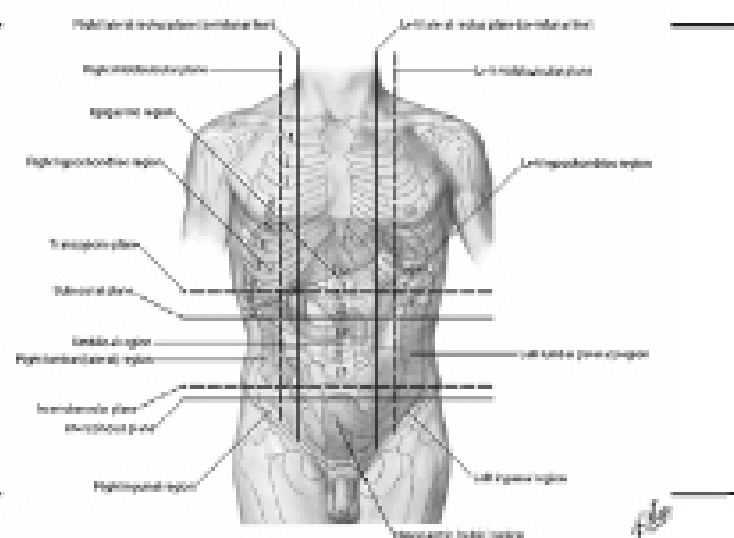


Regions



Regions

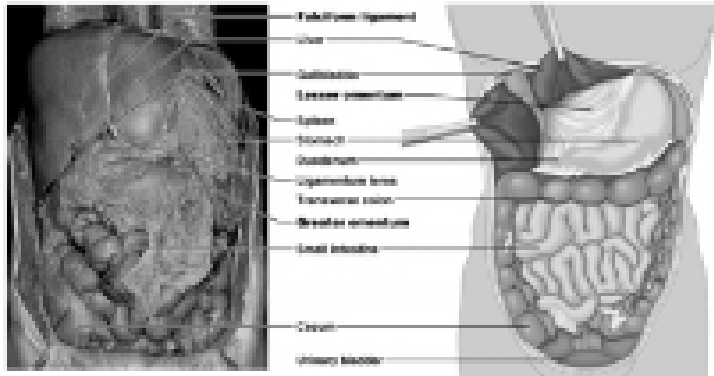
Regions and Planes of Abdomen



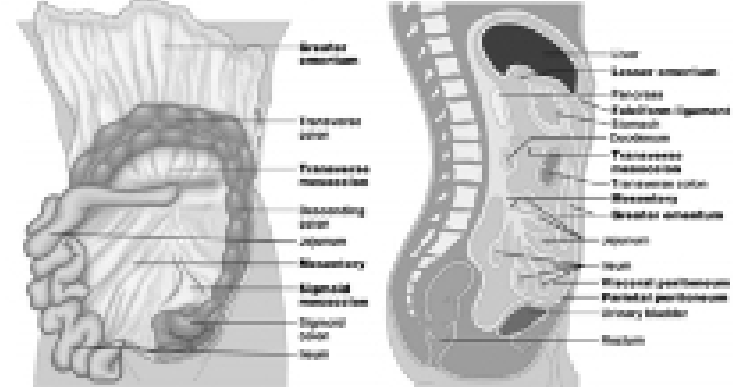
Mesentery

- Double layer of peritoneum, holds organs in place
- Omentums - protection
- Lesser = fatty skin, superficial near the stomach
- Greater = deeper, made of connective tissue, significant fat
- Three layers of fascia – Skin, Fascia, mesentery

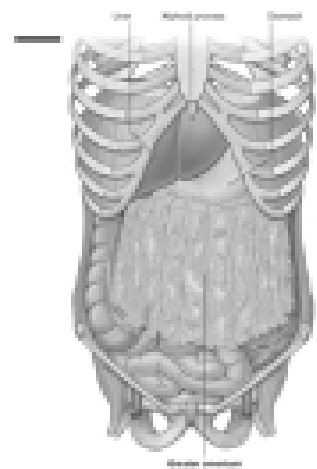
Mesentery



Mesentery

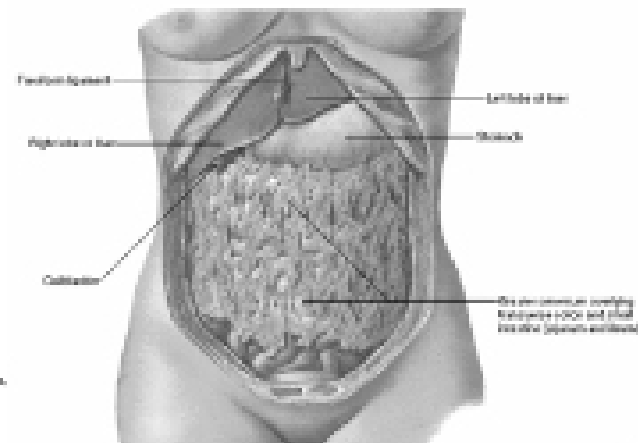


Omentum



Greater Omentum

Greater Omentum and Abdominal Viscera



Histology

- Smooth muscle - peristalsis
- Glands with ducts
- Nerves, arteries and veins

Histology

