



HUMAN
ANATOMY

Seventh Edition

MARTINI
TIMMONS
TALLITSCH

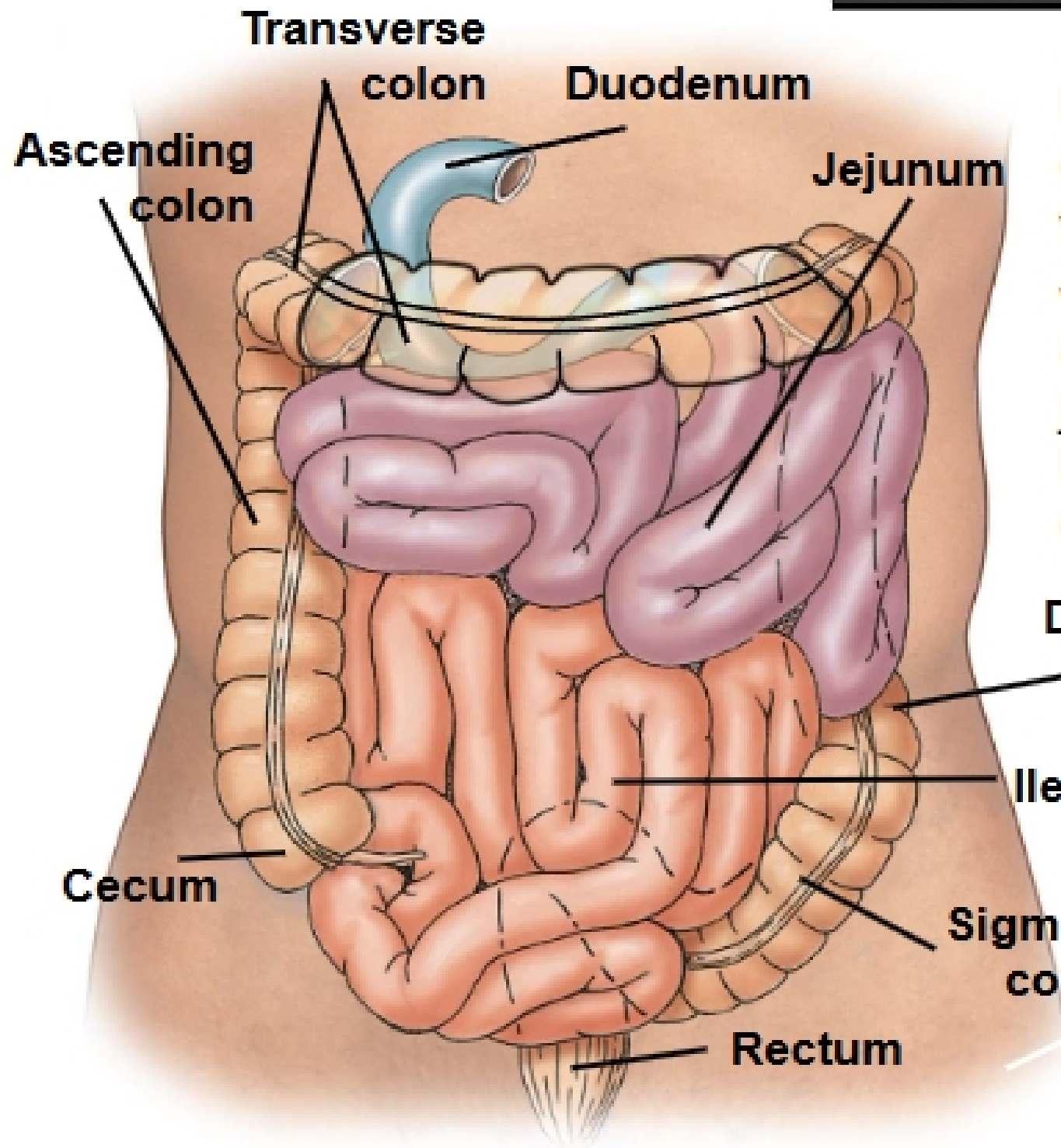
Ch.25

The Digestive System

Part 2

Figure 25.14 Regions of the Small Intestine

Small intestine



Duodenum: receives digestive enzymes from the pancreas, bile from the liver and gallbladder

Jejunum: most of the digestion and absorption occurs in the jejunum

Ileum: connects to the ascending colon

Descending colon

Ileum

Sigmoid colon

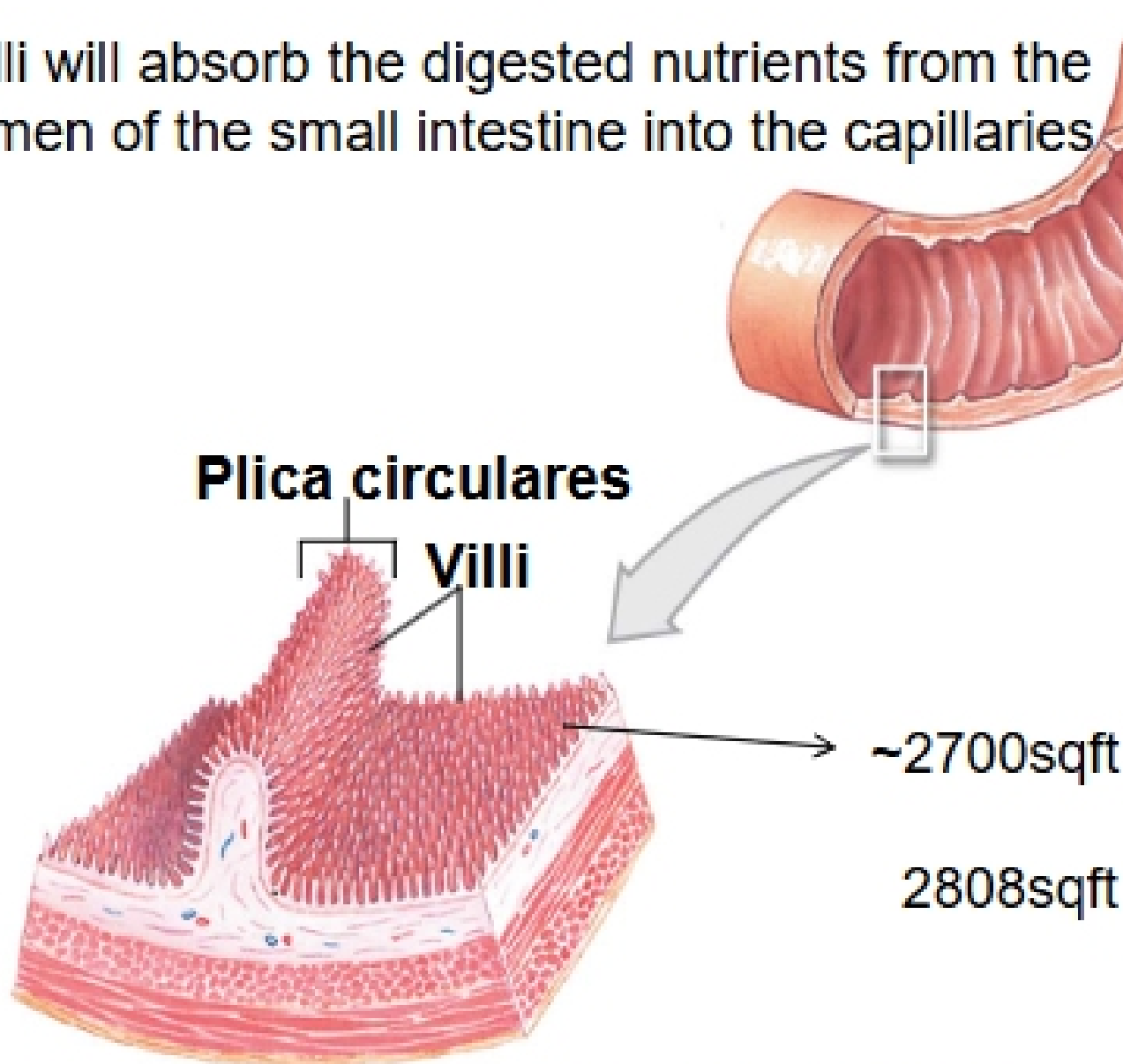
Rectum

Figure 25.15a Histology of the Intestinal Wall

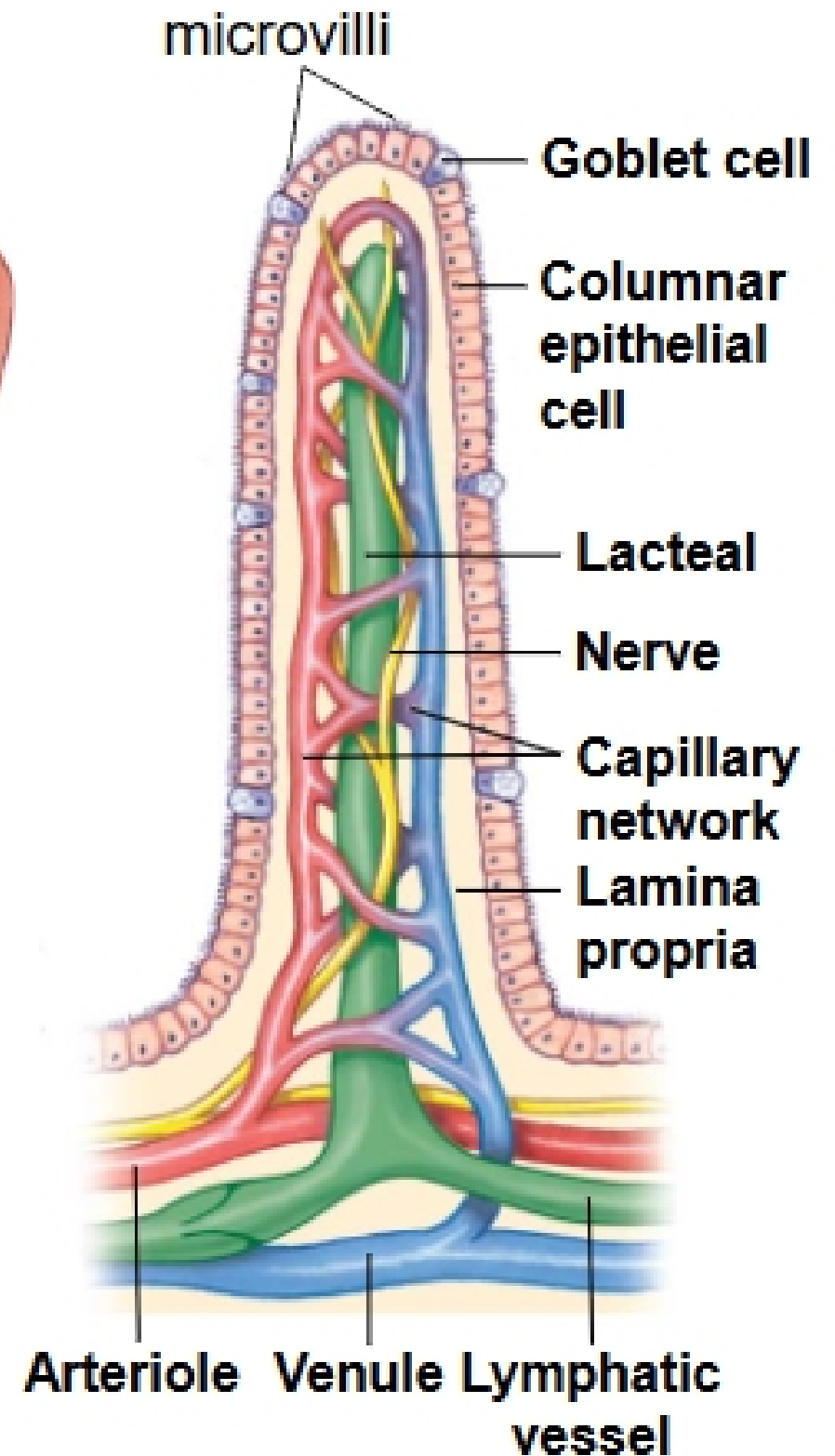
Each plica consists of numerous **Villi** (containing microvilli)

Within each villus are capillaries

Villi will absorb the digested nutrients from the lumen of the small intestine into the capillaries



Characteristic features of the intestinal lining



C