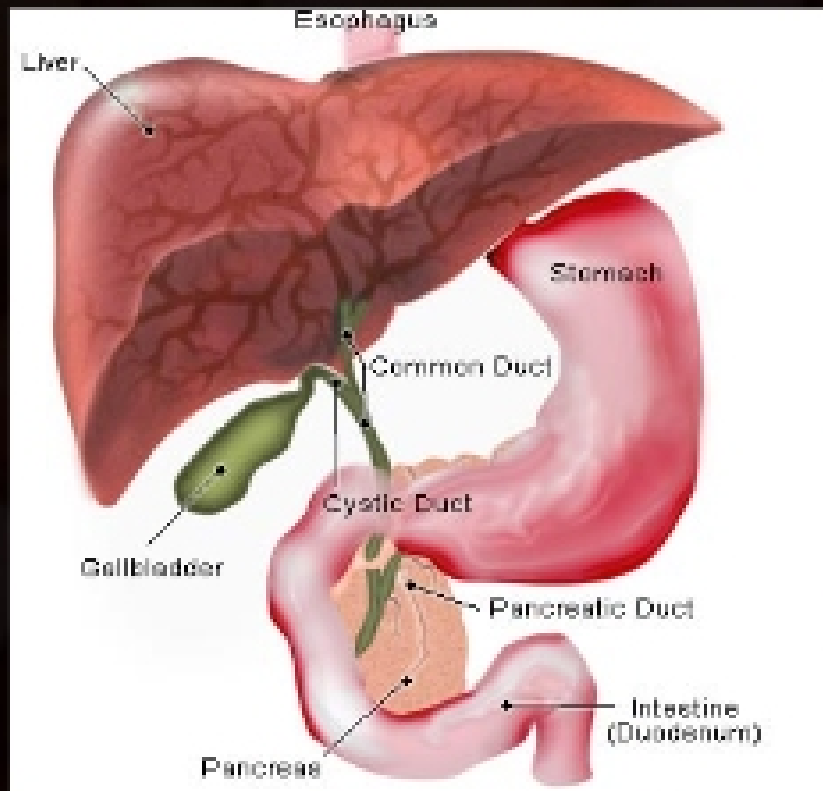


Drugs for Metabolic Disorders



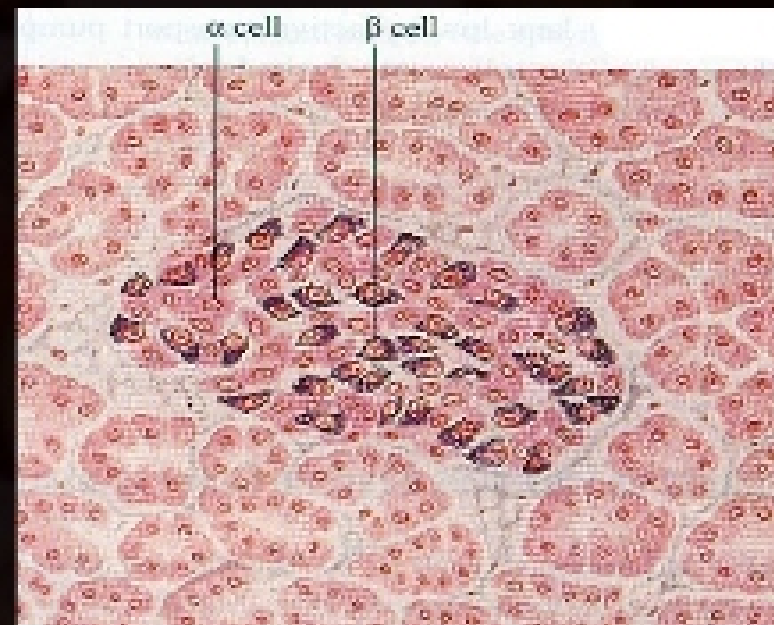
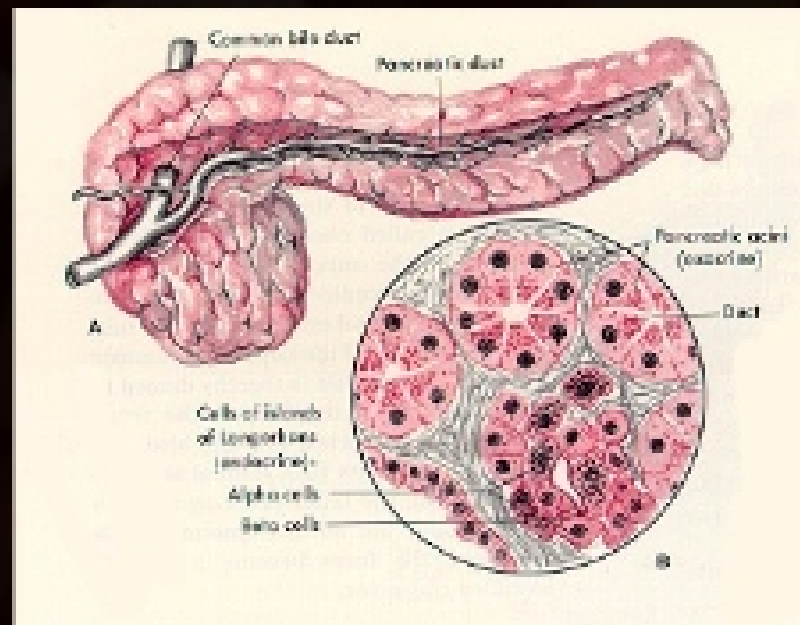
- **Diabetes mellitus**
- **Hyperlipidemia**

Diabetes mellitus

Pancreas:

- **Islets of Langerhans:** site of hormone production
 - **A (alpha) cells** – produce Glucagon
 - **B (beta) cells** – produce Insulin
 - **D (delta) cells** – produce Somatostatin

Insulin and Glucagon are the major regulators of blood glucose



Diabetes mellitus

Blood glucose levels are tightly regulated:

