



Electron probe microanalysis EPMA

Acquiring Images in the SEM



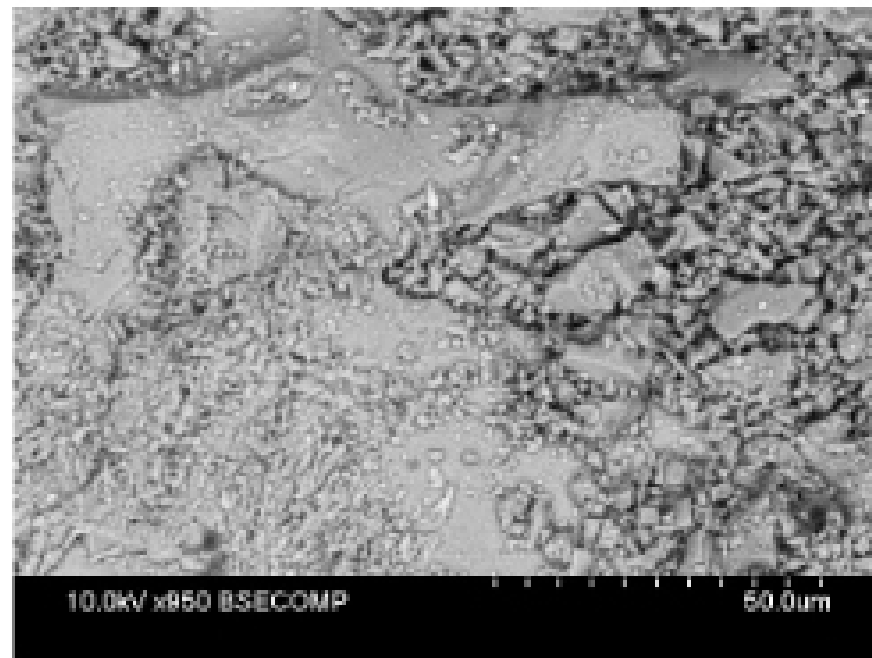
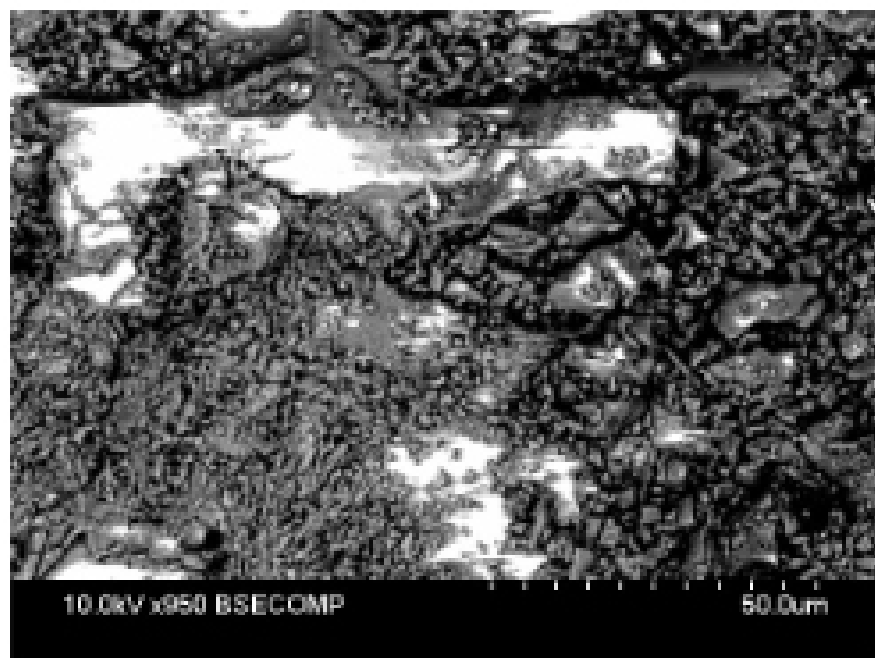
What's the point?

“A picture is worth a thousand words”.

The more we know about how images are acquired, the better we can present research results graphically.



High Vacuum: Need Conductivity!



Above left: uncoated. A charge builds up causes oversaturation (white) and horizontal streaking from beam

Above right: what same area would appear with conductive coating

Right: High vacuum carbon coater (“evaporator” not sputterer)

