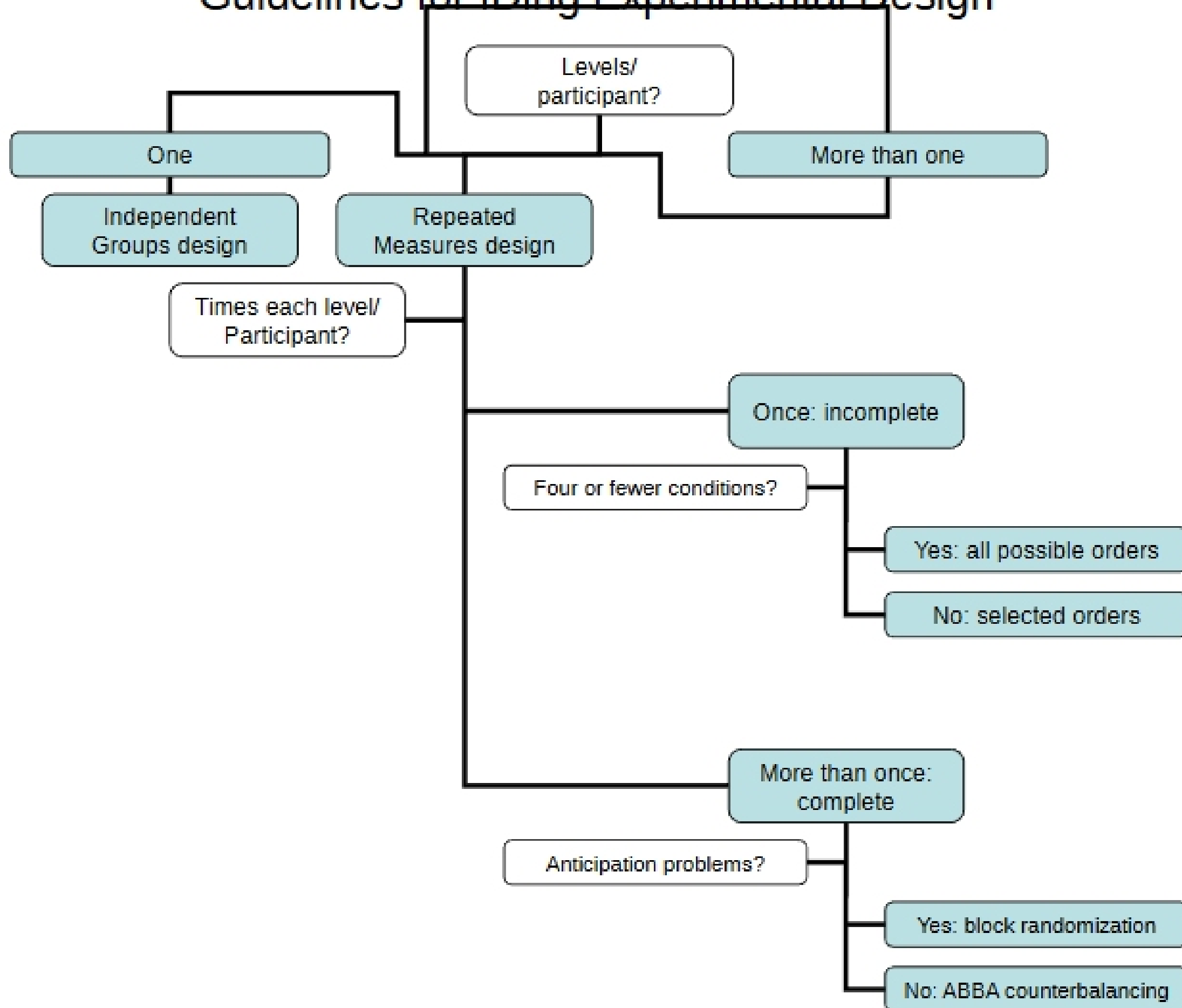
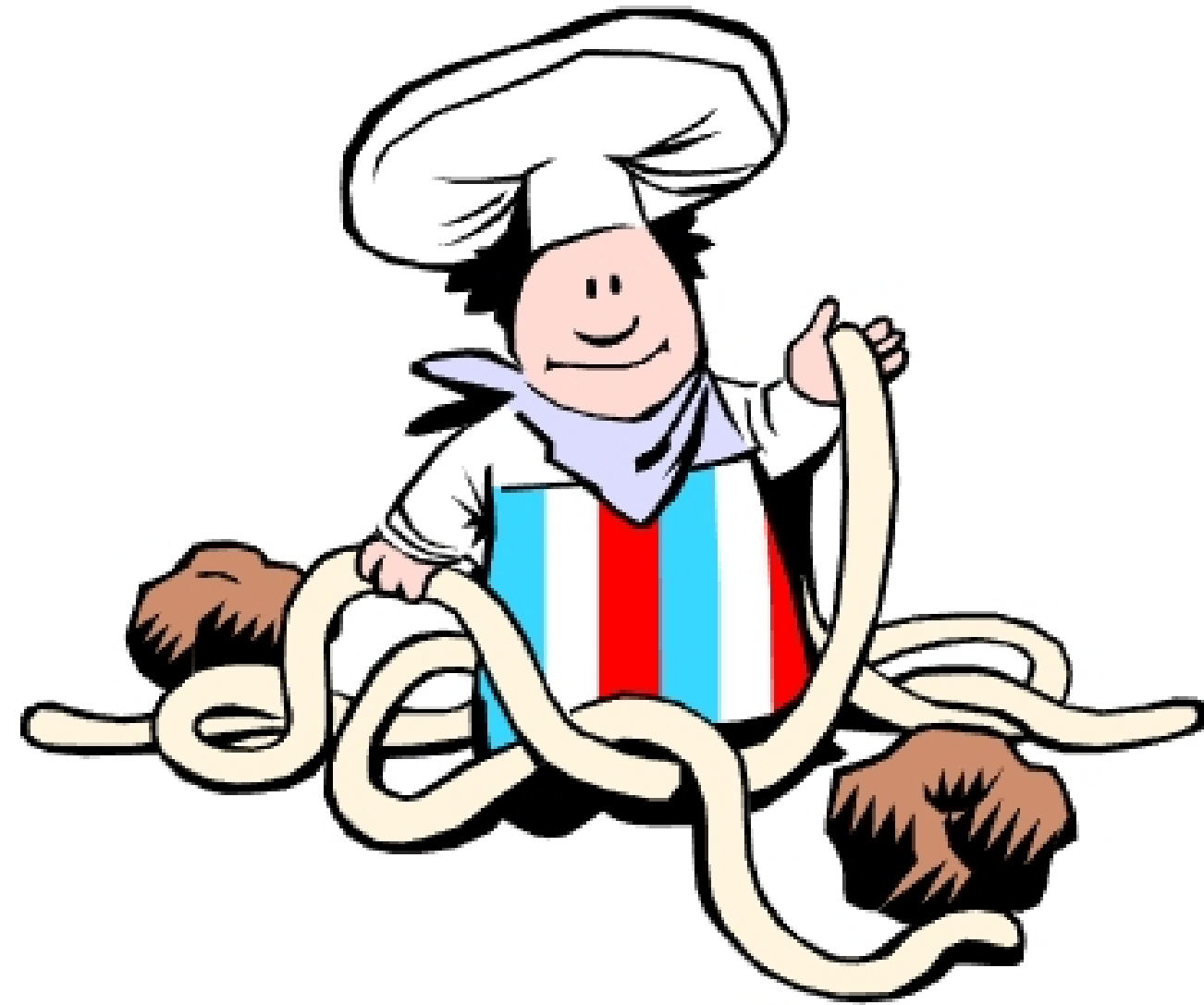


Guidelines for IDing Experimental Design



Complex Designs



When a “two-way” is more than spaghetti and chili!

What are they?

- **Simple versus complex designs**
 - “One-way” versus “Two-way”, etc.
- **Types of factorial designs**
 - Completely randomized
 - Completely within
 - Mixed
- **Variable and level shorthand**

2 x 2

2 x 3

2 x 2 x 3