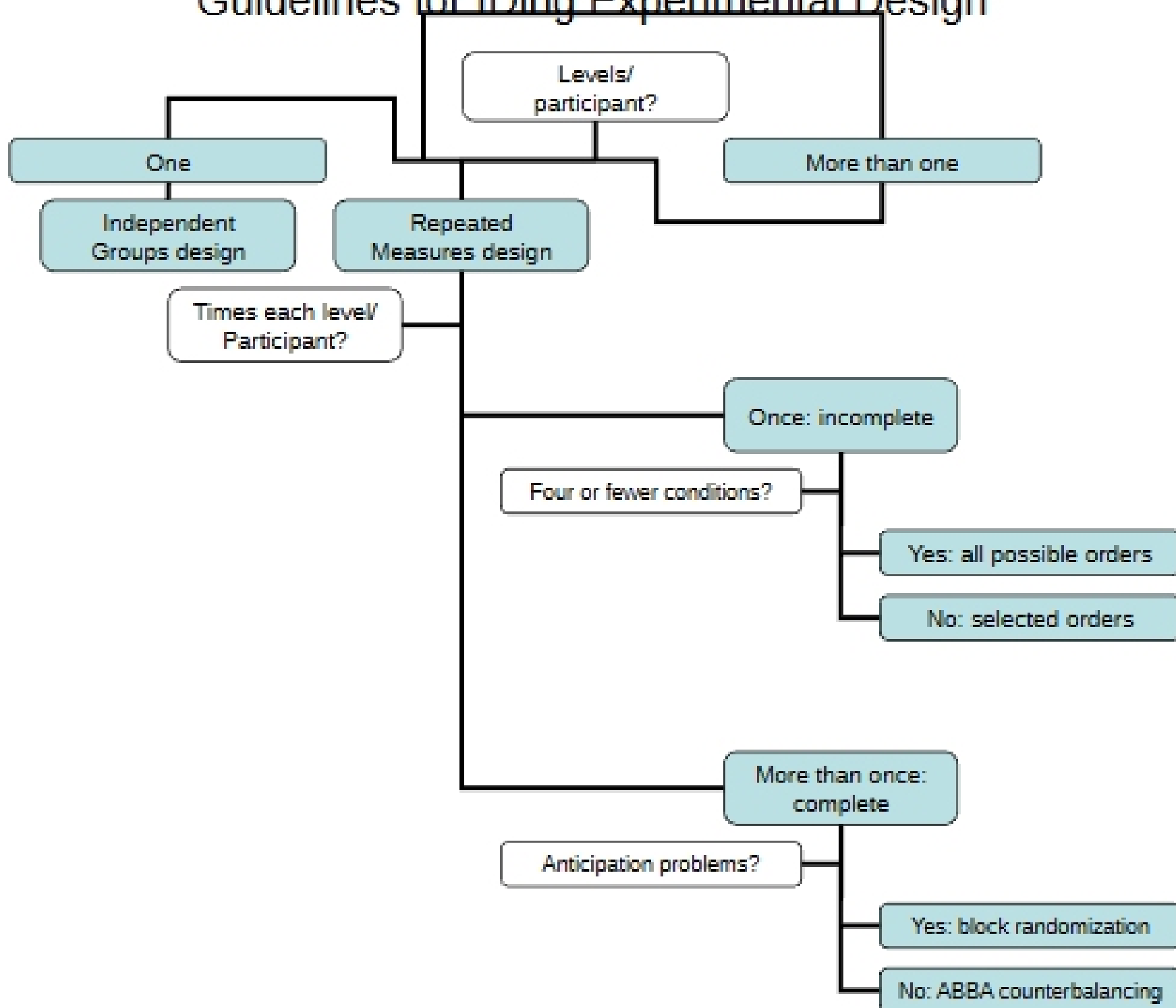


# Guidelines for IDing Experimental Design



# Complex Designs



When a “two-way” is more than spaghetti and chili!

# What are they?

- **Simple** versus **complex** designs
  - “One-way” versus “Two-way”, etc.
- Types of factorial designs
  - Completely randomized
  - Completely within
  - Mixed
- Variable and level shorthand

2 x 2

2 x 3

2 x 2 x 3