

Lab 1; Exercise 1 - **Anatomical Language:**

Anatomical Terms - Describe body position, regions, areas, and landmarks

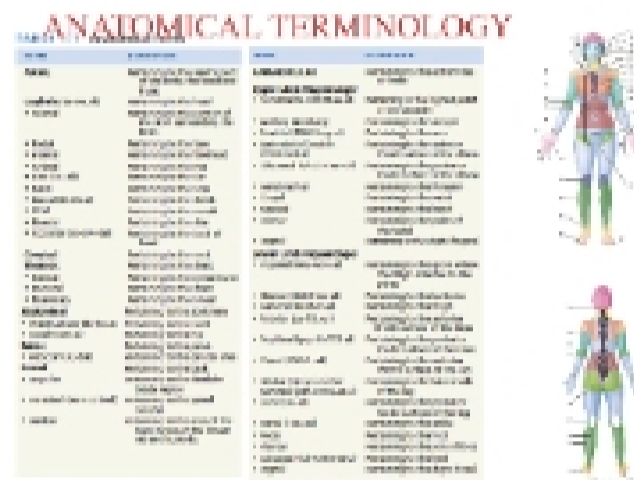
- Majority are in Latin or Greek

Anatomical Position - Reference point used to describe the position of a body part

Regions of the body:

- Cephalic, Cervical, Thoracic, Abdomen, Pelvic, Upper Limb, Lower Limb

Anatomical Terminology



Axial - Pertaining to the central part of the body, the head and trunk

- **Cephalic** - Head
 - **Cranial** - Skull (portion surrounding the brain)
 - **Facial** - Face
 - **Frontal** - Forehead
 - **Orbital** - Eye
 - **Otic** - Ear
 - **Nasal** - Nose
 - **Buccal** - Cheek
 - **Oral** - Mouth
 - **Mental** - Chin
 - **Occipital** - Back of head

Cervical - Neck

Thoracic - Chest

- **Sternal** - Breast Bone
- **Pectoral** - Chest
- **Mammary** - Breast

Abdominal - Abdomen

- **Umbilical** - Navel
- **Coxal** - Hip

Pelvic - Pelvis

- **Pubic** - Genital Areas

Dorsal - Back

- **Scapular** - Shoulder blade region
- **Vertebral** - Spinal Column
- **Lumbar** - Area of the back, between the lowest rib and buttocks

Appendicular - Extremities or Limbs

Appendage - Upper Limb

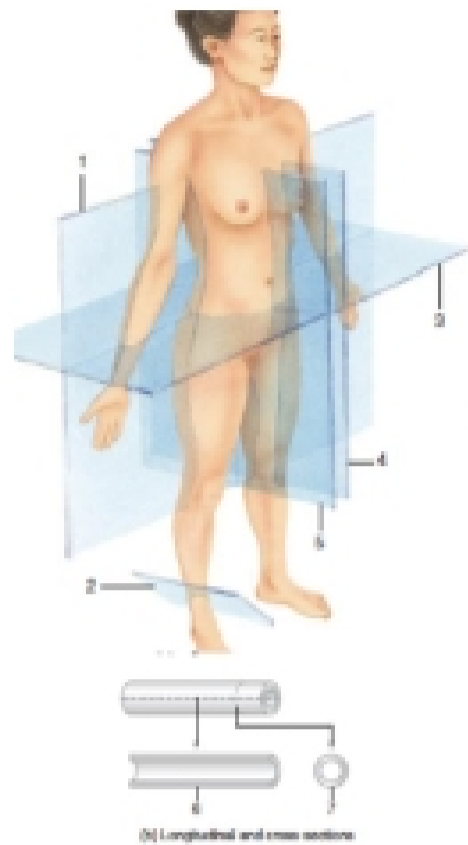
- **Acromial** - Highest point of the shoulder
- **Axillary** - Armpit
- **Brachial** - Arm
- **Antecubital** - Anterior (front) surface of elbow
- **Olecranal** - Posterior (back) surface of elbow
- **Antebrachial** - Forearm
- **Carpal** - Wrist
- **Manual** - Hand
- **Palmar** - Palm of hand
- **Digital** - Fingers

Appendage - Lower Limb

- **Inguinal** - Groin, where the thigh attaches to the pelvis
- **Gluteal** - Buttocks
- **Femoral** - Thigh
- **Patellar** - Anterior (front) surface of knee
- **Popliteal** - Posterior (back) surface of knee
- **Crural** - Anterior (front) surface of leg
- **Fibular** - Lateral side of leg
- **Sural** - Posterior (back) of leg
- **Tarsal** - Ankle
- **Pedal** - Foot
- **Plantar** - Sole of foot
- **Calcaneal** - Heel
- **Digital** - Toes

Body Planes - Flat surfaces that divide the body into visual internal structures (sections)

- Types:
 - **Sagittal Plane** - Divide body into **right/left** sections
 - **Midsagittal**
 - **Parasagittal**
 - **Frontal (Coronal) Plane** - Divide body into **anterior/posterior** sections
 - **Transverse Plane** - Divide body into **superior/inferior** sections
 - **Oblique Plane** - Divide body in **an angle**
- **Tubular Structures:**
 - **Longitudinal Section** (parallel to tube)
 - **Cross-Section** (perpendicular to tube)



1. Frontal Plane
2. Oblique Plane
3. Transverse Plane
4. Midsagittal Plane
5. Parasagittal Plane
6. Longitudinal Section
7. Cross-Section

Directional Terminology:

- **Superior** - Above
- **Inferior** - Below
- **Medial** - Toward midline
- **Lateral** - Away from midline
- **Proximal** - Towards/Near base
- **Distal** - Away/Far from base
- **Anterior** - Front surface
- **Posterior** - Back surface
 - Midline - Middle of body
 - Base - Connector
 - Surface - Skin