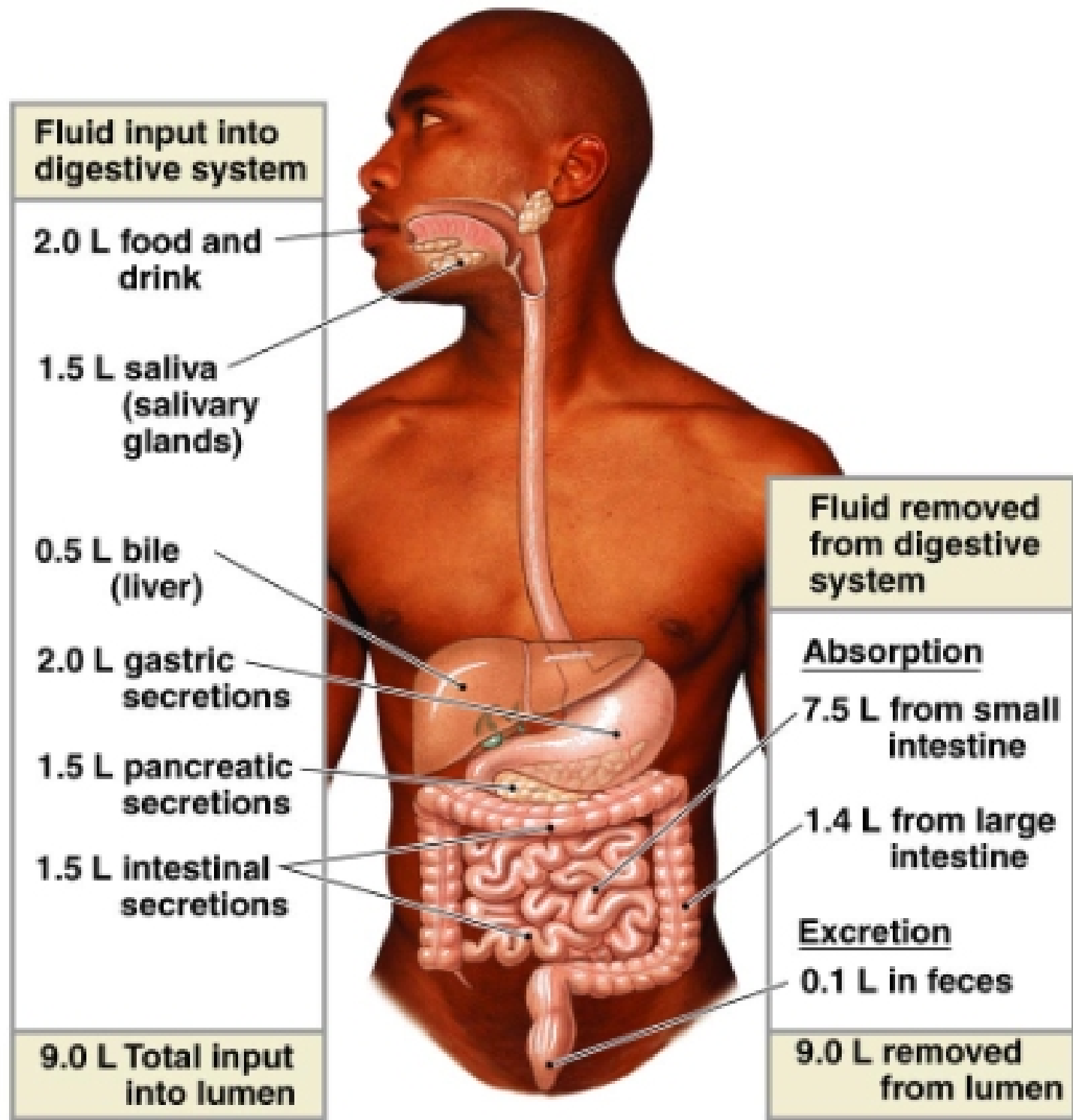


Intestinal Phase of the Response to a Meal.

- Digestion and Absorption are the primary functions of the small intestine.
- Duodenum, jejunum, ileum.
- Accessory organs: pancreas, liver, gallbladder.
- Digestion: the chemical breakdown of macromolecules into component subunits.

Secretions of the Digestive System



Copyright © 2007 Pearson Education, Inc., publishing as Benjamin Cummings.

Figure 21-5