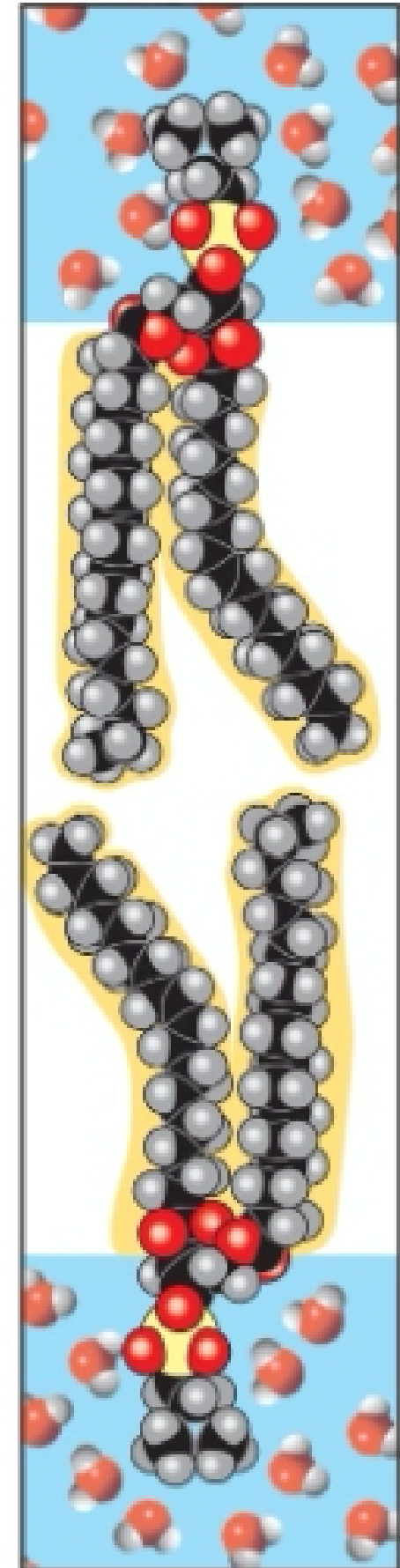
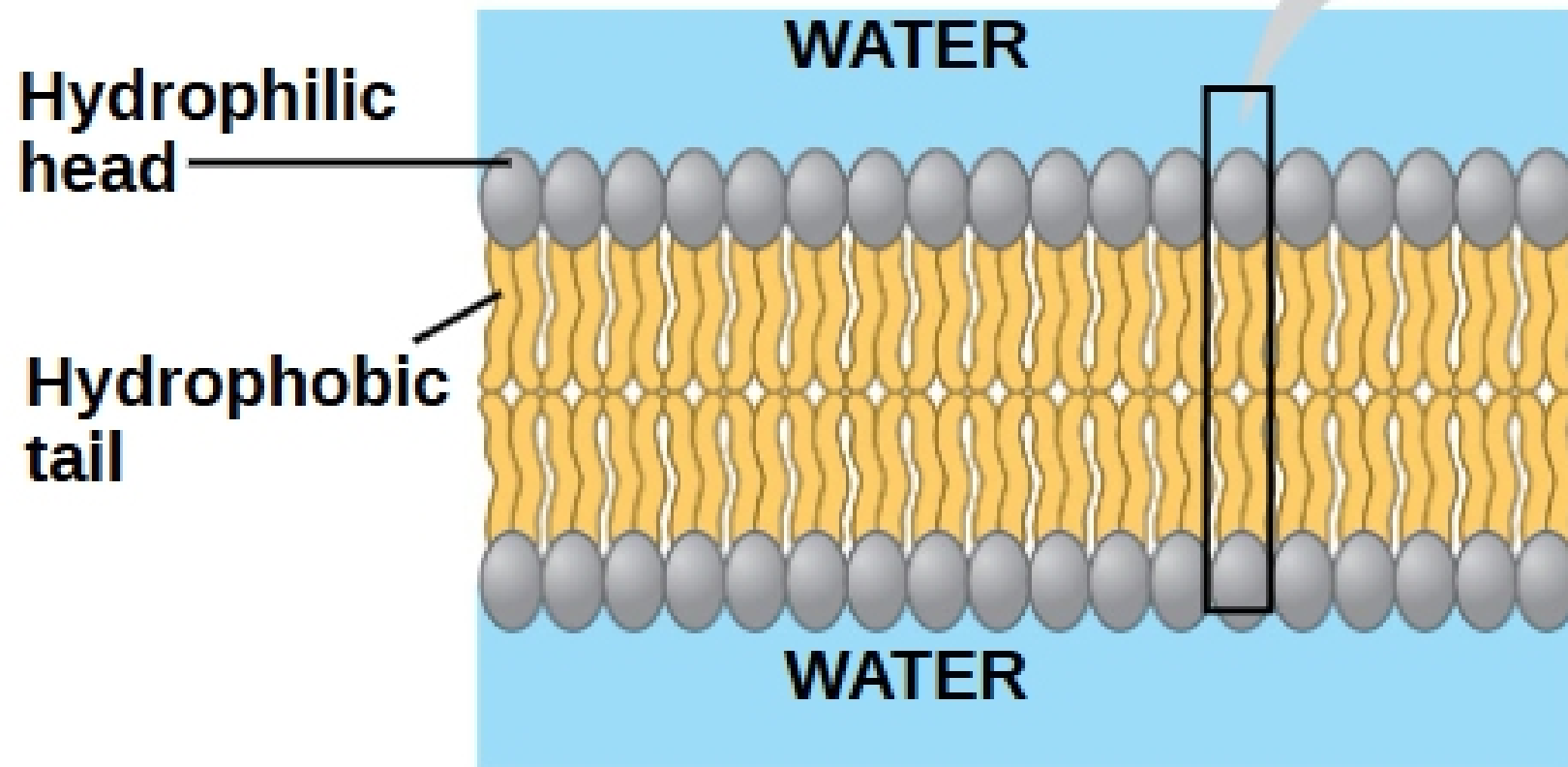
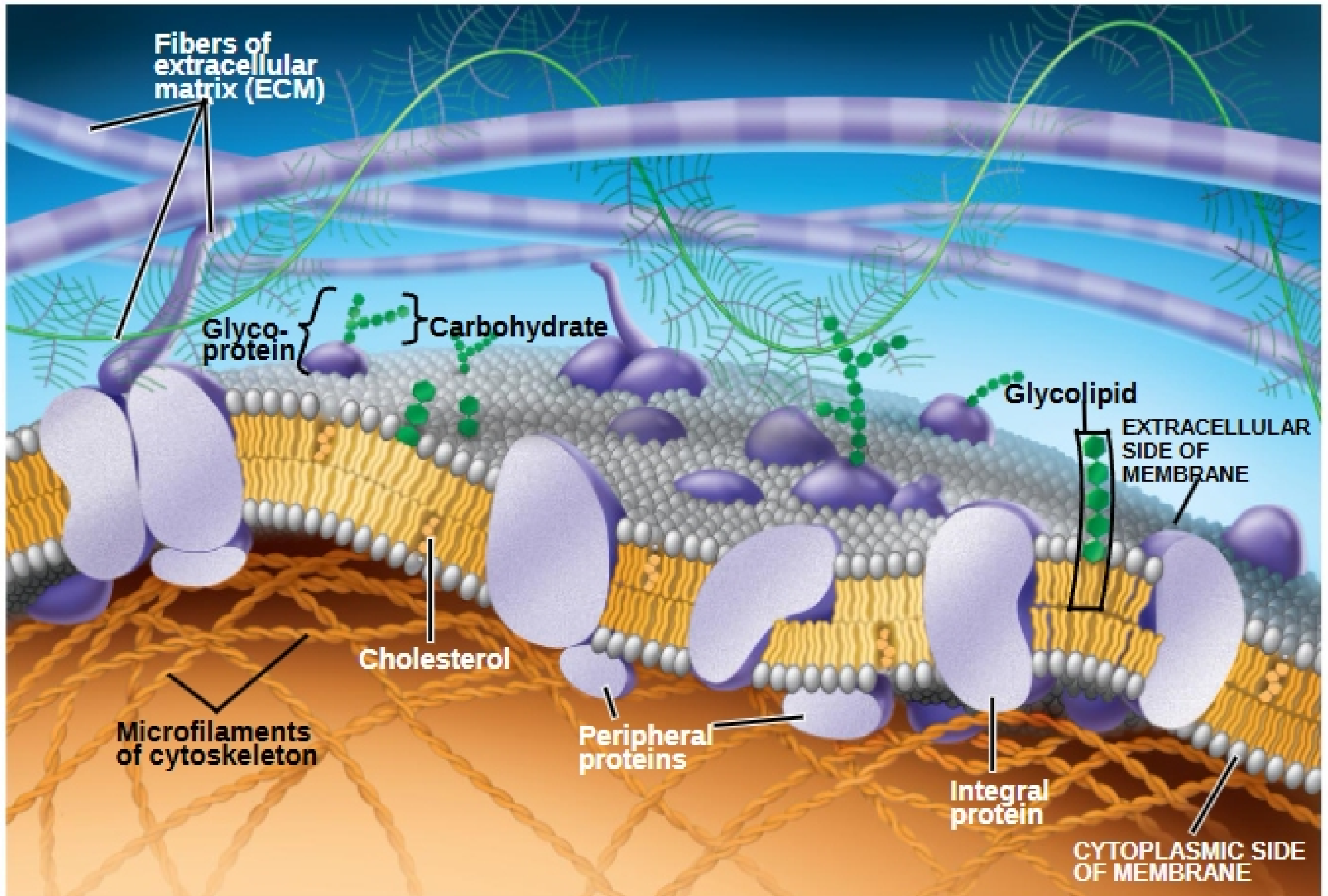


Overview: Life at the Edge

- The plasma membrane is the boundary that separates the living cell from its surroundings
- The plasma membrane exhibits **selective permeability**, allowing some substances to cross it more easily than others





Concept 7.1: Cellular membranes are fluid mosaics of lipids and proteins

- Phospholipids are the most abundant lipid in the plasma membrane
- Phospholipids are **amphipathic molecules**, containing hydrophobic and hydrophilic regions
- The **fluid mosaic model** states that a membrane is a fluid structure with a “mosaic” of various proteins embedded in it
- Phospholipids in the plasma membrane can move within the bilayer
- Membranes must be fluid to work properly; they are usually about as fluid as salad oil