

Introduction

In the beginning of the lab, the Teaching Assistants will guide you through learning how to login to the Geography Department's computer network, navigate our directory structure and make sure that you have the appropriate printers installed on your account. After this week your TAs have been instructed to assume that you understand the basics of the Geography Computer Network and they will be moving on with instruction in GISsci. **THERE IS SIMPLY NO WAY YOU CAN LEARN GIS WITHOUT UNDERSTANDING THE BASICS OF THE COMPUTER SYSTEM YOU ARE WORKING ON.**

The Geography Computer System

The computers that you will be using in this lab run the Microsoft Windows XP operating system.

There are two things of special note. The first is that all computers are networked together.

Second, the lab is setup with a server. Our server is known as **GEOGSTUDENT** and it is where in your home directory (which we often call your H:\ drive) you are to save all your work. **DO NOT SAVE YOUR WORK ON OTHER MACHINES OR IN OTHER DIRECTORIES AS YOUR WORK MAY DISAPPEAR!** All the computers have ENVI installed so it does not matter which machine you use.

Login to the Geography Computer Network

In order to use the GIS computers you must provide a valid **LoginID** and **Password**. The same login will work on all the machines. Your LoginID and password have already been created for everyone in the class and will be provided to you. Everyone should try to login and if you encounter any problems let your TA know.

Your Home Directory

Every student has a home directory (also known as a folder). The home directory is physically located on **GEOGSTUDENT** computer. However, to make things easy it will appear on every computer you login to as **H:**. The H: drive points to your home directory so everyone's H: will be different. This is done to assure user privacy.

You should navigate to the correct location and determine if your folder exists. If your folder does not exist then please inform your TA.

The Windows XP Desktop

After you have logged in you should familiarize yourself with the Windows XP desktop. There is gray bar with a **START** button on the bottom. Placing the cursor over the button (using the mouse) and clicking the left mouse button should bring up a set of options. In the Geography computer network, most of the commonly used programs can be accessed under the Apps Menu.

An example showing how to start ENVI is shown below.

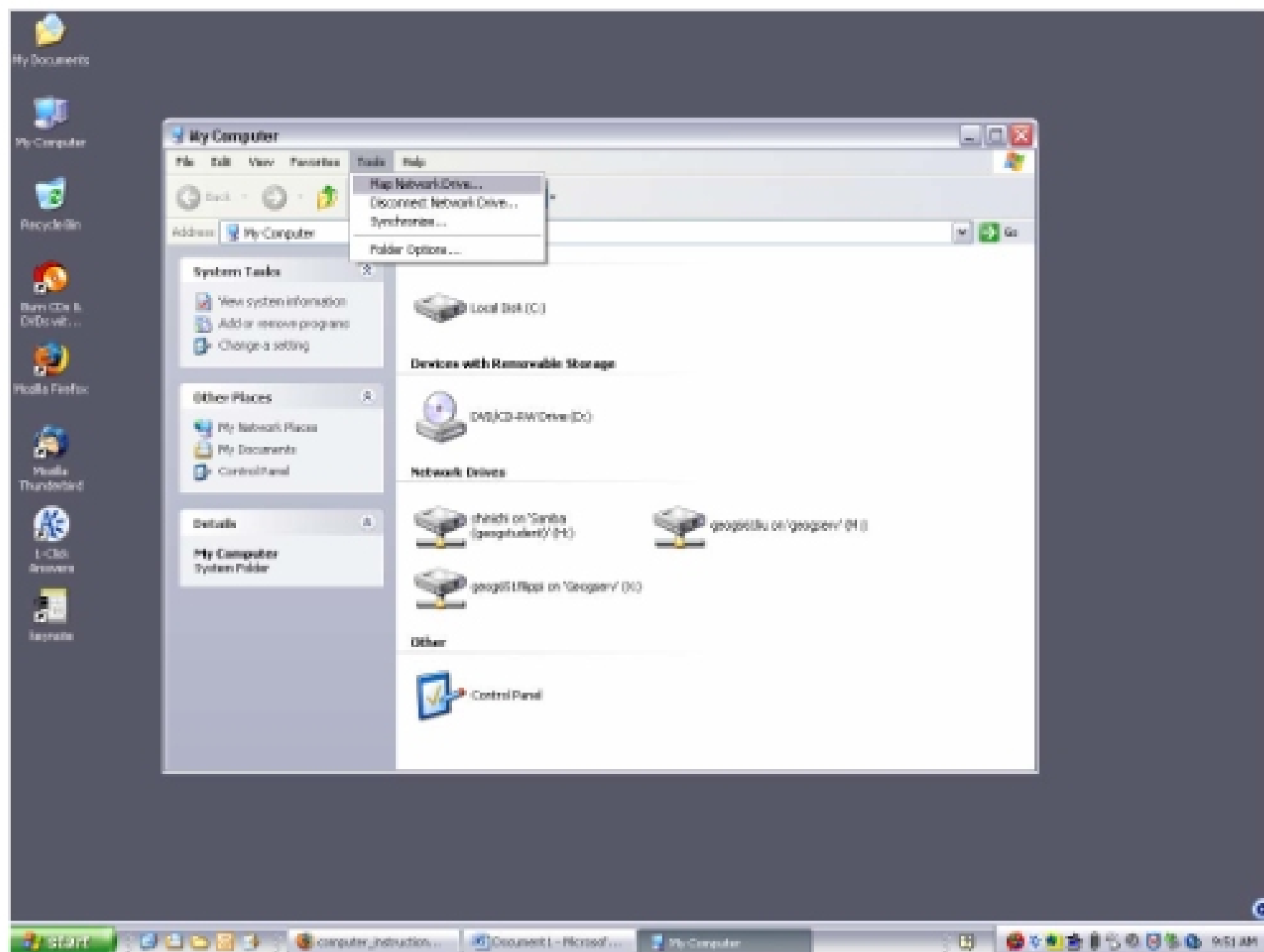


Right-clicking while the cursor is over **My Computer** will bring up a set of options. Selecting **Explore** will start **Windows Explorer**. This program will allow you to easily see how the network is set up and allow you to move between machines and folders on machines. You can also navigate around the systems by using the icons in the upper left corner. By the time you leave you should be very comfortable with the computer system so in the future you can locate the files and folders you need.

Connecting to the Class Share containing Lab Exercise Materials

The laboratory exercises in this class will make use of remote sensing images and other information that have compiled for your use. In order to gain access to the class shares along with the remote sensing exercises you need to map two network drives. As is illustrated below, this is actually quite easy.

First, open up **My Computer** by double clicking on its icon, then under **Tools** select **Map Network Drive...** as is shown in the figure below



There are several ways to connect to a specific network drive, but since we already know which drive (the geog361 or geog651 folder on the computer called geogserv) we want to connect to, the easiest way is to simply select a drive letter designation (U:) and specify the folder we want to connect to.

You must also make sure this drive is reconnected each time you log into the network by checking the appropriate box. To map the network drive, simply fill in the required fields as shown below.