
A Brief Introduction to the Geography Computer Network

Introduction

In the beginning of the lab, the Teaching Assistant will guide you through learning how to login to the Geography Department's computer network, navigate our directory structure and make sure that you have the appropriate printers installed on your account. After this week your TA has been instructed to assume that you understand the basics of the Geography Computer Network and they will be moving on with instruction in GISci. **THERE IS SIMPLY NO WAY YOU CAN LEARN GIS WITHOUT UNDERSTANDING THE BASICS OF THE COMPUTER SYSTEM YOU ARE WORKING ON.**

The Geography Computer System

The computers that you will be using in this lab run the Microsoft Windows 7 operating system.

There are two things of special note. The first is that all computers are networked. The second is that our lab is setup with servers. One server is known as GEOGUGRAD and is for undergraduates another is GEOGGRAD and is for graduate students. These are the locations where your home directory is located (which we often call your H:\ drive) you are to save all your work. **DO NOT SAVE YOUR WORK ON OTHER MACHINES OR IN OTHER DIRECTORIES AS YOUR WORK MAY DISAPPEAR!** All the computers have ENVI installed so it does not matter which machine you use.

Login to the Geography Computer Network

In order to use the GIS computers you must provide a valid **LoginID** and **Password**. The same login will work on all the machines. Your LoginID and password will be created for you. Everyone should try to login and if you encounter any problems let your TA know. You will be provide information on what your LoginID and initial password will be.

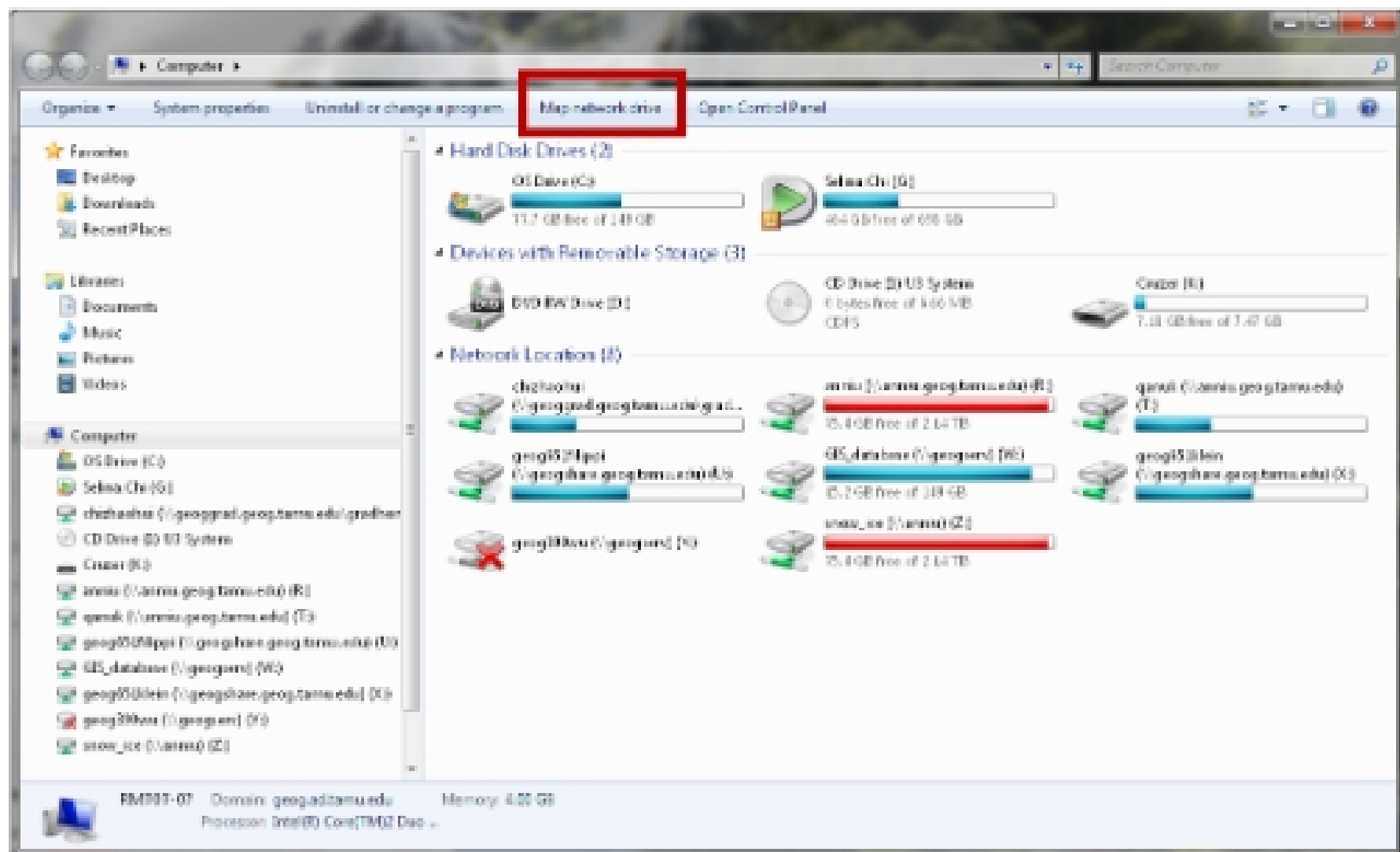
Your Home Directory

Every student has a home directory (also known as a folder). The home directory is physically located on **GEOGUGRAD** or **GEOGGRAD** computer. However, to make things easy it will appear on every computer you login to as **H:**. The H: drive points to your home directory so everyone's H: will be different. This is done to assure user privacy.

You should navigate to the correct location and determine if your folder exists. If your folder does not exist then please inform your TA.

The Windows 7 Desktop

After you have logged in you should familiarize yourself with the Windows 7 desktop. There is a blue Windows "orb" logo with a **START** button on the bottom. Placing the cursor over the button (using the mouse) and clicking the left mouse button should bring up a set of options. In the Geography computer network, most of the commonly used programs can be accessed under the Apps Menu.



There are several ways to connect to a specific network drive, but since we already know which drive (the **geog361** folder on the computer called **geogshare**) we want to connect to, the easiest way is to simply select a drive letter designation (**U:**) and specify the folder we want to connect to.

You must also make sure this drive is reconnected each time you log into the network by checking the appropriate box. To map the network drive, simply fill in the required fields as shown below.