

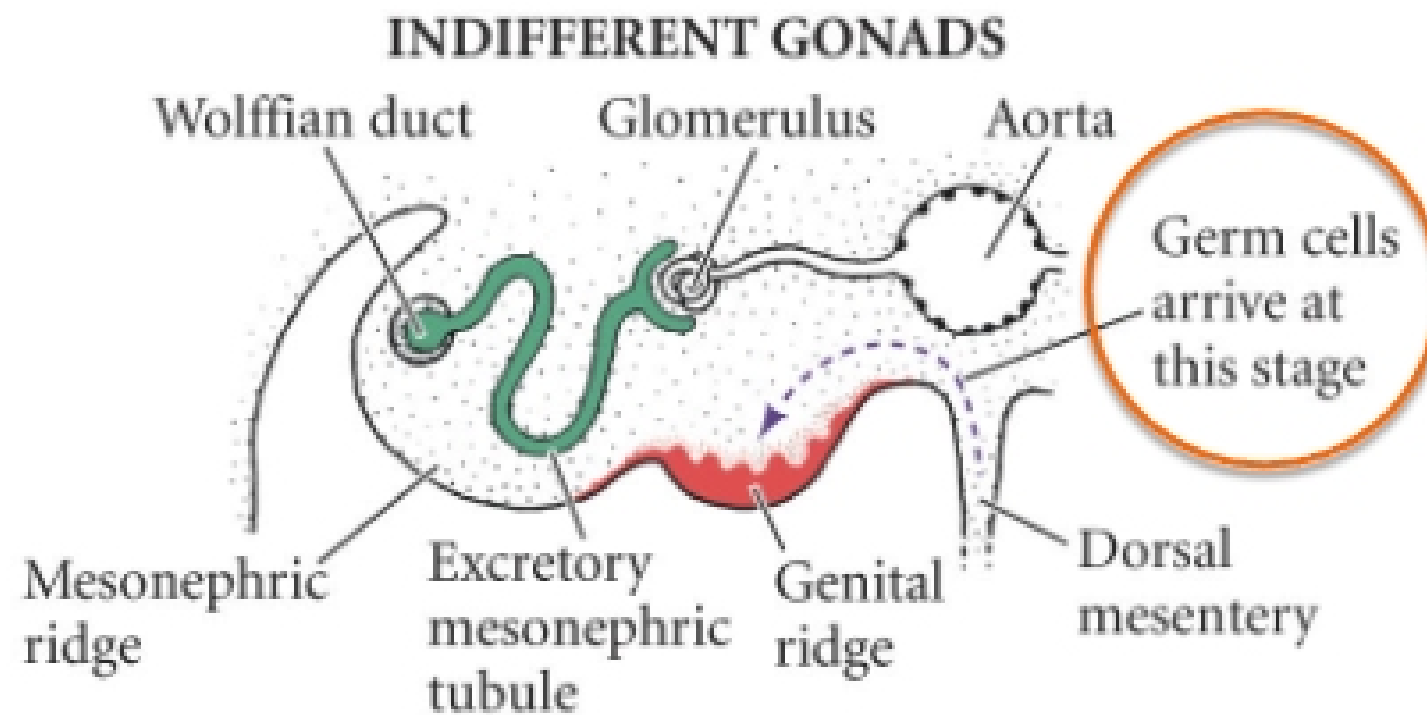


CHAPTER 19, THE SAGA OF THE GERM LINE

ZOO3603

Development of germ cells

- ❑ The germ cells do not arise within the gonad itself.
- ❑ Their precursors, the primordial germ cells (PGCs), arise elsewhere and migrate into developing gonads.



(A) 4 WEEKS

Fig. 17.2

The points of gametogenesis

1. The **formation** of germ plasm & the **determination** of the PGCs.
2. The **migration** of the PGCs into the developing gonads.
3. The process of **meiosis** & the modifications of meiosis for forming sperm & eggs.
4. The **differentiation** of the sperm & eggs.
5. The hormonal control of gamete maturation & **ovulation**.