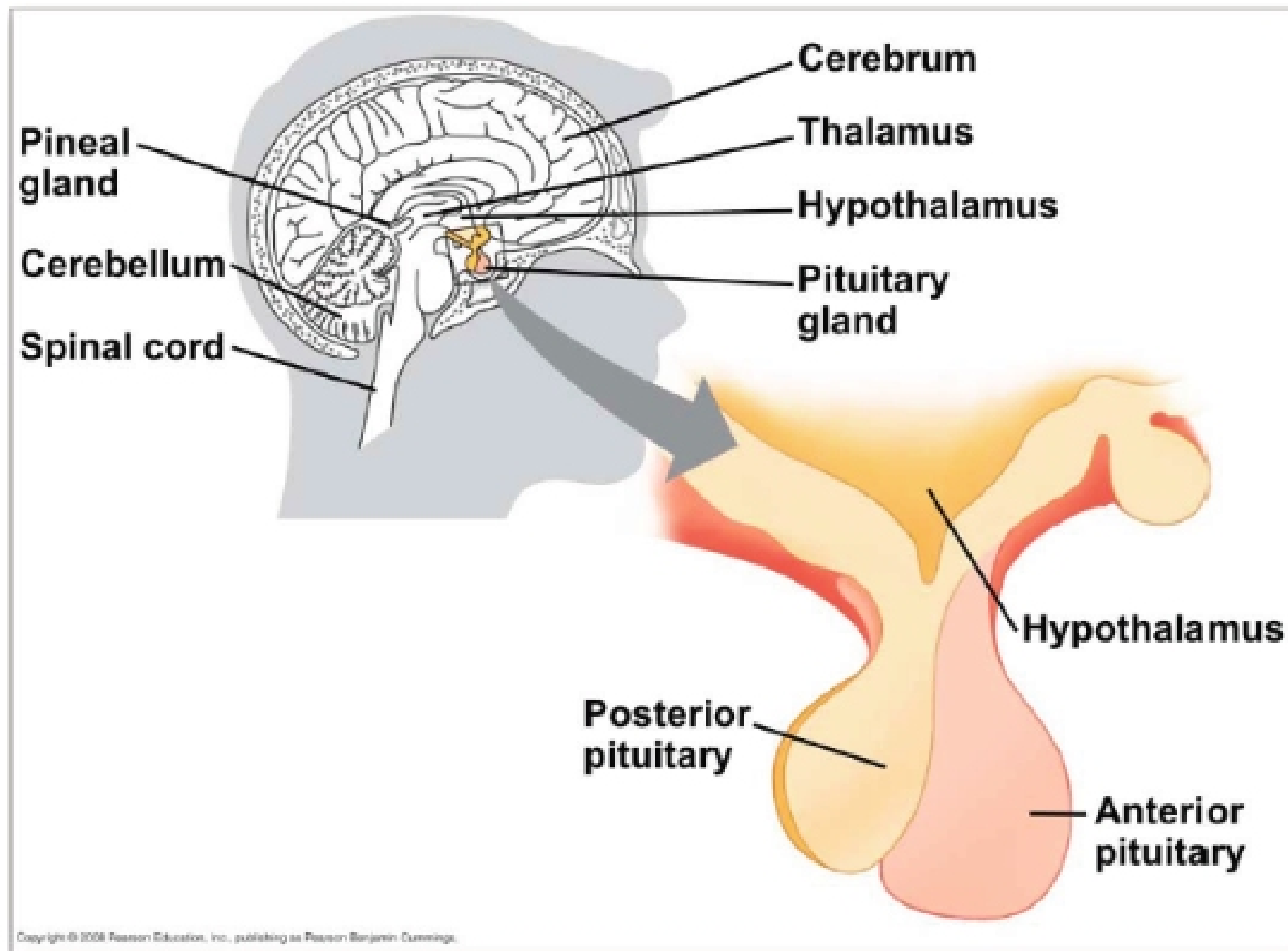


# Endocrine glands in the human brain



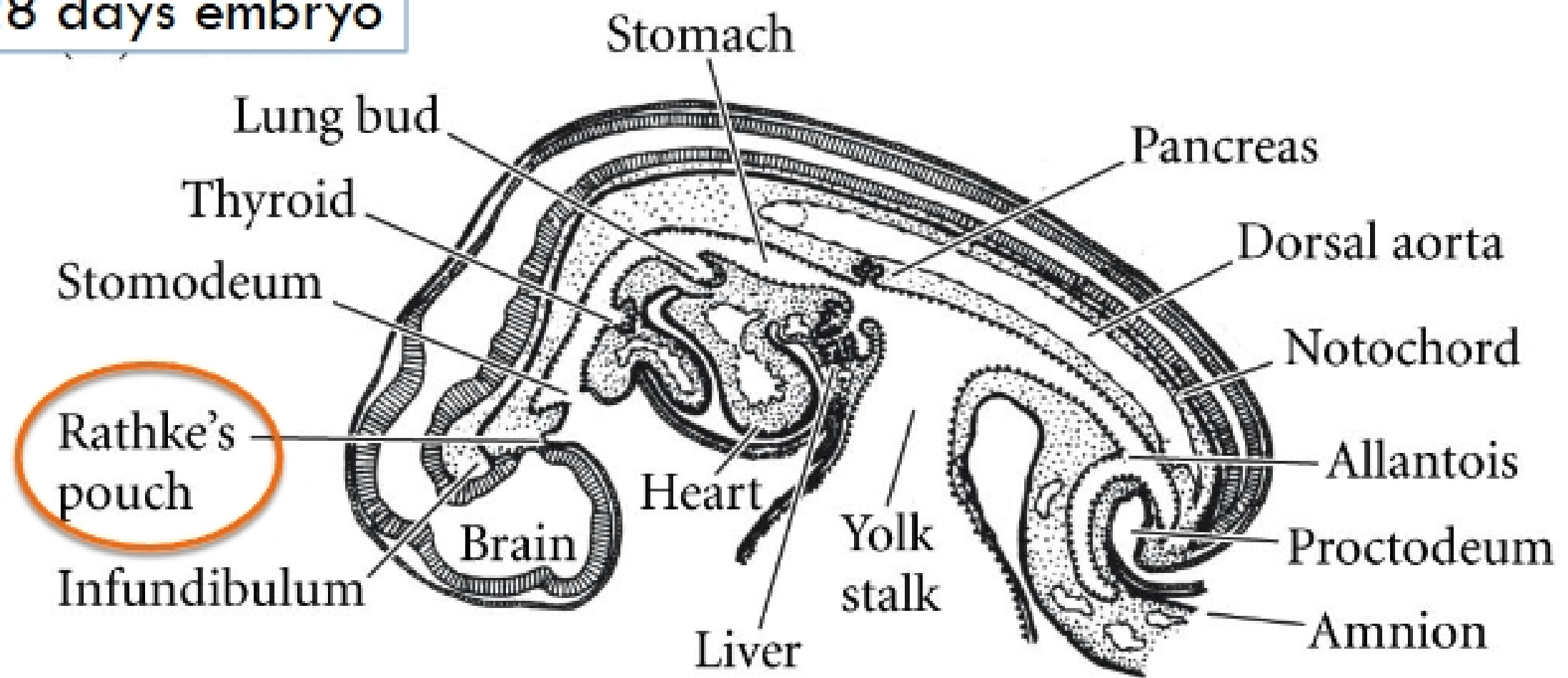
# Development of anterior pituitary gland



1. The oral end of the gut is blocked by a region of ectoderm called the oral plate or stomodeum.
2. The stomodeum breaks and forms the oral opening of the digestive tube.
3. The stomodeum is in contact with the brain ectoderm, and interact each other.
4. The roof of stomodeum forms Rathke's pouch and becomes the glandular portion of the pituitary gland.

# Formation of the human digestive system

28 days embryo



Rathke's pouch

Anterior pituitary or adenohypophysis:  
Glandular portion of the pituitary gland.