

Immune Function

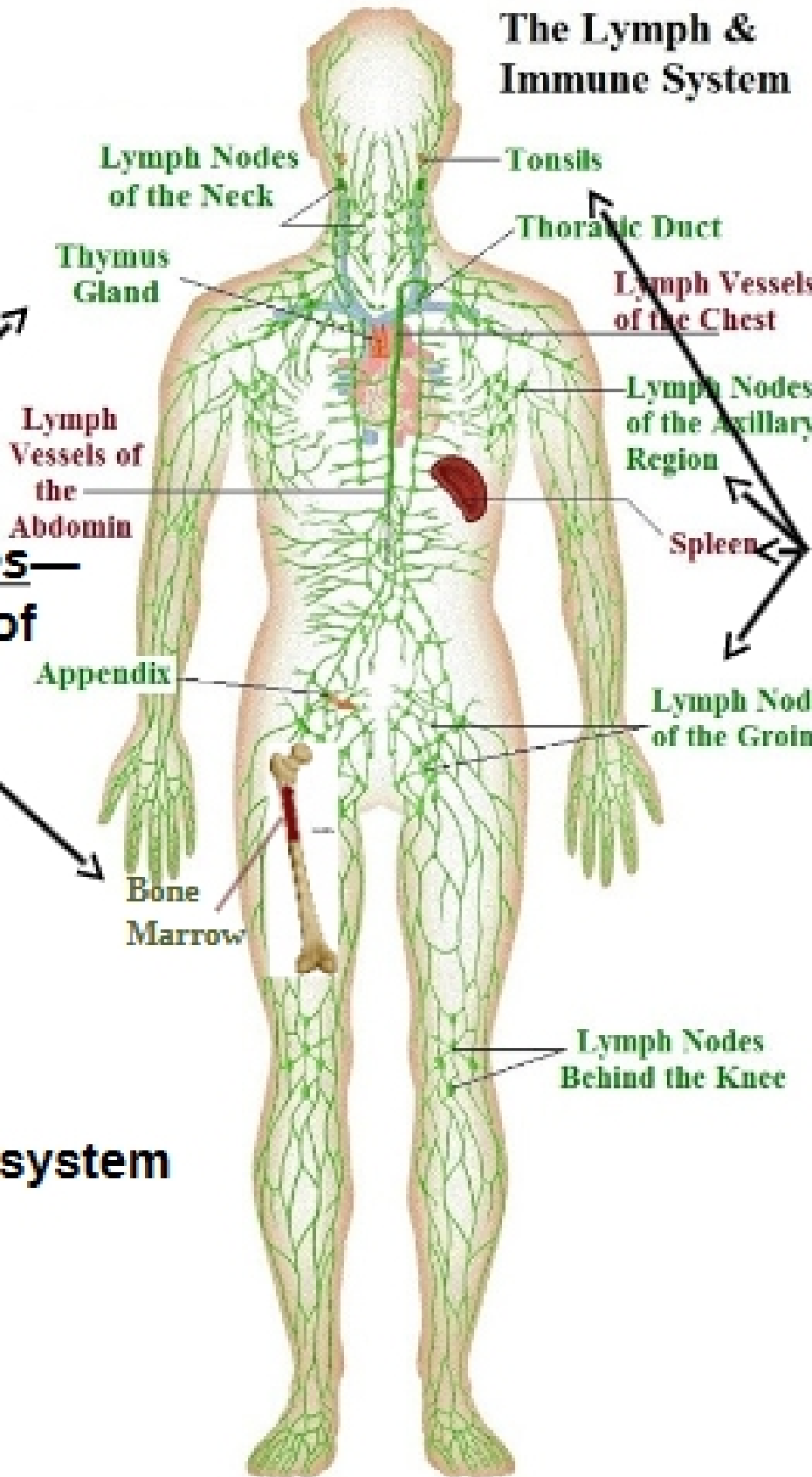
[Ch. 24]

The Lymph & Immune System

**Defense against
damaging molecules
& foreign invaders**

Primary lymphoid Tissues—
Formation & maturation of
immune cells

**Secondary lymphoid
Tissues**—interaction
of mature immune
cells with pathogens
& initiation of immune
response



Anatomy of immune system

[pp. 805-8]

Infectious Pathogens

skin / (2 m²)
mucosal membrane (400 m²)

Parasities

Fungi

Bacteria

Viruses

**Innate
Immune Response**

*(Nonspecific, includes
inflammatory response)*

[pp. 804-5]

**Adaptive
Immune Response**

*(Acquired, specific, ability to
form immune "memory")*

Cells of the Immune System [pp. 808-11]

ADAPTIVE

INNATE

