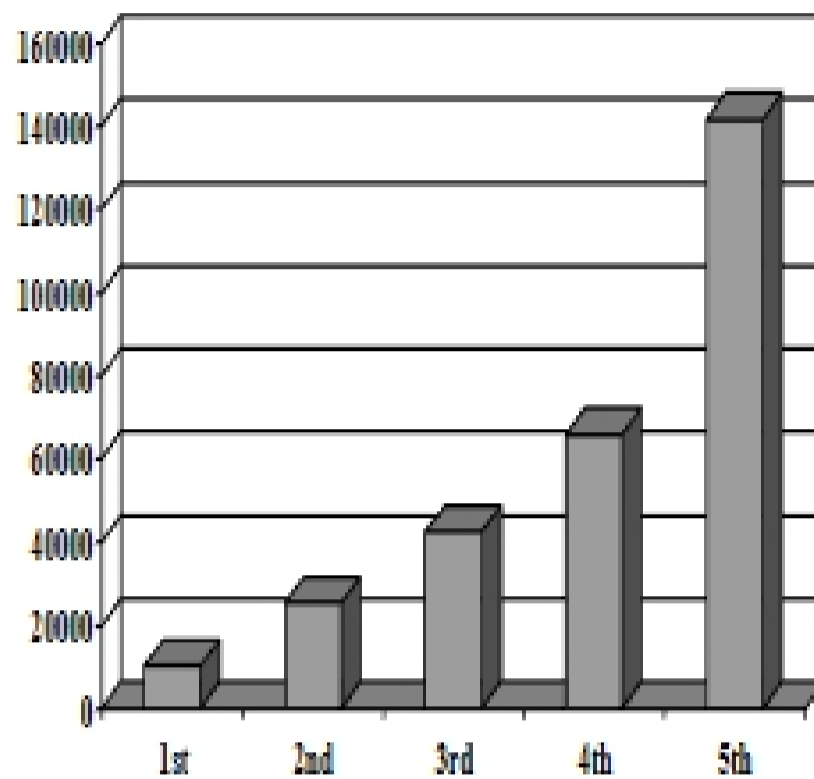


## **Racial Inequality**

## **Income & Income Inequality**

### Mean Household Income, by Quintile, 2000



- 1<sup>st</sup> \$10,188
- 2<sup>nd</sup> \$25,331
- 3<sup>rd</sup> \$42,359
- 4<sup>th</sup> \$65,727
- 5<sup>th</sup> \$141,621

Source: US Census Bureau data for 2000, CPS

### Cutoffs for Household Income Quintiles, 2001

	2001 (national)	Fall 2002 Soc 220	Spring 2003 Soc 220
Bottom 20%	<\$17,970	0%	4%
Next Lowest 20%	<\$33,314	8%	4%
Middle 20%	<\$53,000	13%	10%
Next Highest 20%	<\$83,500	23%	30%
Top 20% (15% of total)	>\$83,500	41%	42%
Top 5%	>\$150,499	15%	10%

Source: US Census Bureau data for 2000, CPS + Surveys of Sociology 220 Students

**Fall 2002 Students  
In/Out of State by Income Group**

	OutState	Wisconsin
Lowest 20%	0%	0%
20-40%	8%	7%
Middle 20%	8%	15%
60-80%	25%	22%
80-95%	42%	41%
top 5%	17%	15%

**Spring 2003 Students  
In/Out of State by Income Group**

	OutState	Wisconsin
Lowest 20%	3%	6%
20-40%	6%	0%
Middle 20%	9%	12%
60-80%	25%	35%
80-95%	47%	35%
top 5%	9%	12%