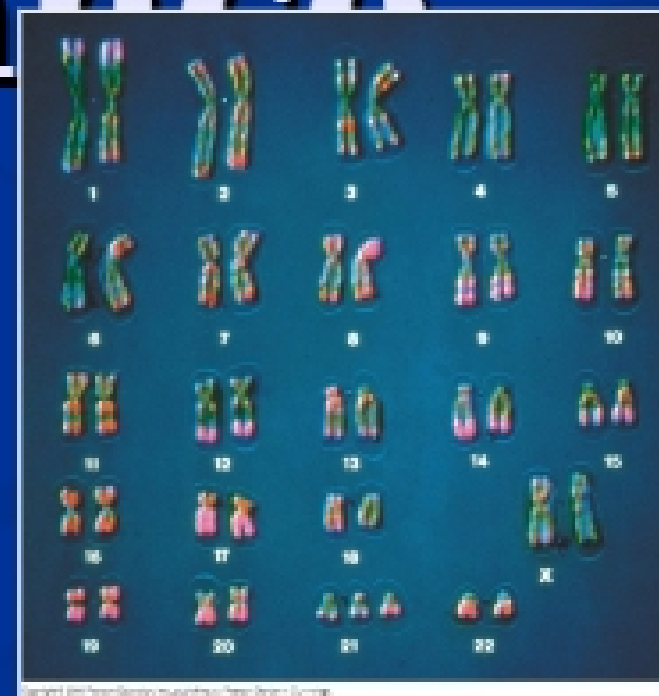




Chromosome Theory of Inheritance



Chromosome Theory

- ***Today's understanding:***

Genes, which determine genetic traits, are located on chromosomes

- ***Historical Evidence:***

- Sutton
- Morgan
- Bridges

X - Linked Traits

HUMAN EXAMPLE

Autosomal Inheritance

- Genes for these traits on #1 → 22
- Both ♂ & ♀ have two genes for every trait

X-linked Inheritance

- **X- Linked trait** - traits whose gene is located on the “X” chromosome, therefore
 - Females (XX) have two genes
 - Males (XY) only have one.....