

Downloading Eclipse

Much of this handout was written by Justin Marus and Brandon Burr.

This quarter we'll be using Stanford's customized version of Eclipse to build our programs. Eclipse is an enormously popular industrial strength Java environment with many, many features. Fortunately, Eclipse is also open source—anyone is free to change Eclipse to work the way they want. We have taken advantage of that freedom to install special Stanford features into Eclipse, to tailor it specifically for CS 106A. This document gives instructions on how to get starting using Eclipse, and its Stanford features in particular. If you run into any trouble installing Eclipse, please email Chris Piech at piech@cs.stanford.edu.

Installing Eclipse

Before you begin to write programs for Karel or Java, you will need to obtain a copy of Eclipse from the CS 106A course website. The process for downloading Eclipse depends on what system you are using. The instructions for the Macintosh are shown in Figure 1, and those for Windows machines appear in Figure 2. On either platform, the process may take a while, so be patient!

Figure 1. Instructions for downloading Eclipse on a Macintosh

Our version of Eclipse will only work on Mac OS X version 10.2 or higher. If you don't have that version of the operating system (or you are running OS 9), you'll need to either upgrade or do your class work in a public cluster.

- 1. Get Eclipse from the CS 106A website.** Before you begin to write your first Java or Karel program, you will need to obtain a copy of Eclipse from the CS 106A course website. To do so, go to <http://cs106a.stanford.edu/>, click on **Software**, click on **Stanford Eclipse for Macintosh OSX**, and then save the **stanford_eclipse32_mac.zip** file somewhere on your hard drive.
- 2. Install Eclipse.**
 - a. Double-click the **stanford_eclipse32_mac.zip** file, which will create a folder named **eclipse**.
 - b. Drag the **eclipse** folder to the **Applications** folder.
- 3. Create a shortcut.** Open the **eclipse** folder (the one you just dragged into the **Applications** folder), and drag the square Eclipse icon to your dock.
- 4. Make sure you have the latest version of Java (version 1.5 or higher).** Most recently purchased Macs will come with Java version 1.5 (or higher) pre-installed. To make sure you have the latest version, select the **Software Update** item under the Apple menu. If the update program determines that you need to upgrade to the most recent version of Java, follow the instructions for doing so.

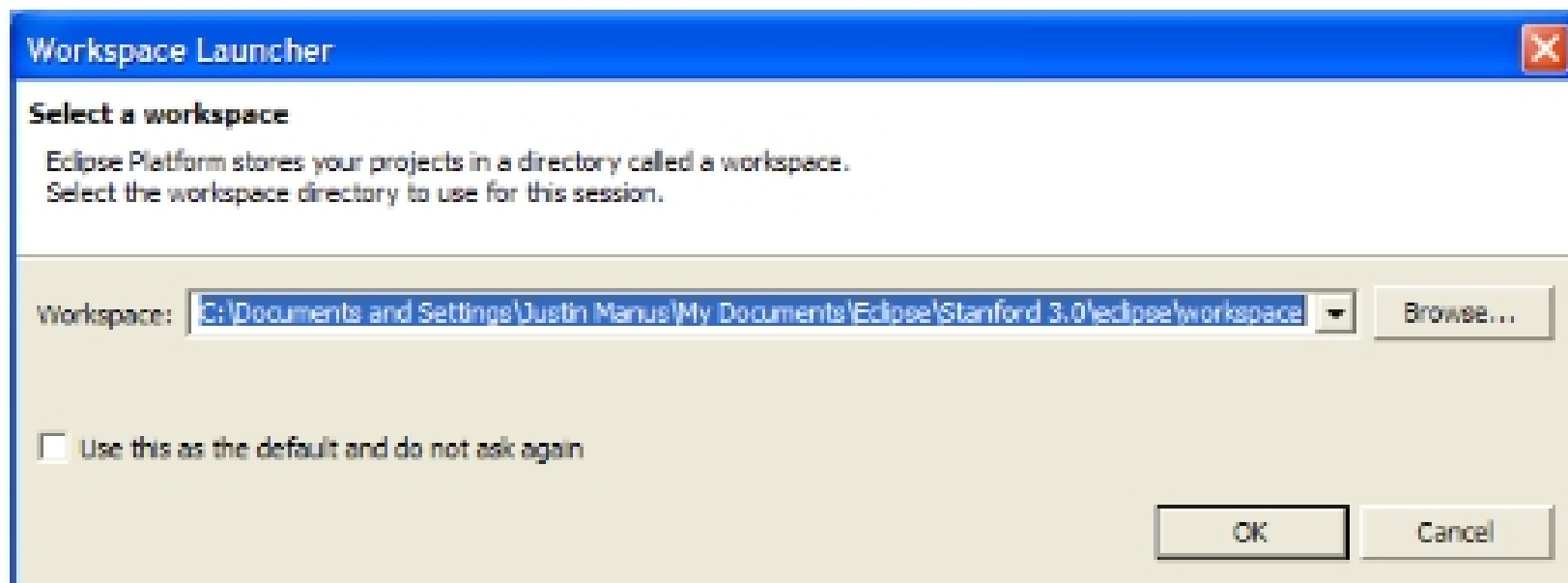
Figure 2. Instructions for downloading Eclipse on a Windows-based platform

Our version of Eclipse runs only on the Windows 2000, XP, Vista, and Windows 7 operating systems. If you have Windows 98 or ME on your computer, you will need to do your class work in one of the public computer clusters. Before installing Eclipse, you will first need to have a copy of the latest version of the Java JRE (Java Runtime Environment) installed on your computer. Note that Java version 1.6 is the latest version of Java. If you don't know which version, if any, of the JRE you have, or want to upgrade to the latest version, just start at Step 1.

- 1. Uninstall previous versions of the JRE.** Before installing a new version of the JRE, we recommend that you remove any older copies that may be installed.
 - a. Open the control panel by clicking on **Start**, then **Settings**, then **Control Panel**
 - b. Then select **Add or Remove Programs** (on XP) or **Programs and Features** (on Vista or Windows 7)
 - c. From the list of programs you see, uninstall any occurrences of **Java/J2SE Runtime Environment**, **Java SDK**, or **Java Update**. Note that the exact program name may be slightly different or include a version number, but you generally want to remove anything that includes the text: **Java/J2SE Runtime Environment**, **Java SDK**, or **Java Update**.
- 2. Get the JRE from the CS106A website.**
 - a. You can obtain a copy of the Java JRE version 1.6 from the CS106A website: <http://www.stanford.edu/class/cs106a>. Click on the **Software** section link and then click on the **Java 1.6 JRE installer for the PC** link.
 - b. After clicking this link a prompt will appear to ask you whether you want to run or save the file. Click **Run** to begin the download and installation process. If a subsequent security warning dialog box appears, click **Run** (or **Yes**) to continue with the installation.
 - c. The Java JRE installation program should begin. Do a **Typical** installation, and follow the rest of the instructions given in order to complete your installation.
- 3. Get Eclipse from the CS 106A website.** Before you begin to write your first Java or Karel program, you will need to obtain a copy of Eclipse from the CS 106A course website. To do so, go to <http://cs106a.stanford.edu/>, click on the **Software** section link and then click on **Stanford Eclipse for Windows**, and save the file to somewhere on your hard drive. This may take a little while as the file being downloaded is rather large.
- 4. Install Eclipse.** Unzip/extract the contents of the file by right-clicking on the folder you just downloaded (which is named **eclipse-SDK-3.4.2-win32**), selecting the **Extract All...** option and typing **C:\Program Files\Eclipse** as the location to extract the files to. Note that you may need to create a new folder located at **C:\Program Files\Eclipse** prior to performing the unzip/extract. Then continue following the steps in the extraction process. (Note: if your version of Windows does not have built-in support for unzipping/extracting programs, you can obtain a program to unzip/extract files at <http://www.winzip.com>.)
- 5. Create a shortcut.** After extracting Eclipse, you can then create a shortcut for easy access to the program.
 - a. Open the **C:\Program Files\Eclipse\eclipse** directory
 - b. Right-click and drag the **eclipse.exe** file (i.e., the **eclipse** application) to your desktop and then select the option **Create shortcut here**.

Running Eclipse

At this point you should have Eclipse installed and working on your computer. When you run eclipse for the first time, you may get a screen that looks like this:



A workspace is just a directory that Eclipse will use to place new projects in. In 106A you won't have to make any new projects from scratch. We will always give you skeleton projects for your assignments, so you don't need to worry about where the workspace is. The suggested location is fine. Click the **Use this as the default and do not ask again** checkbox, and then click **OK**. Once you do, Eclipse will start running and—after what may seem like a relatively long time—bring up the following screen:

