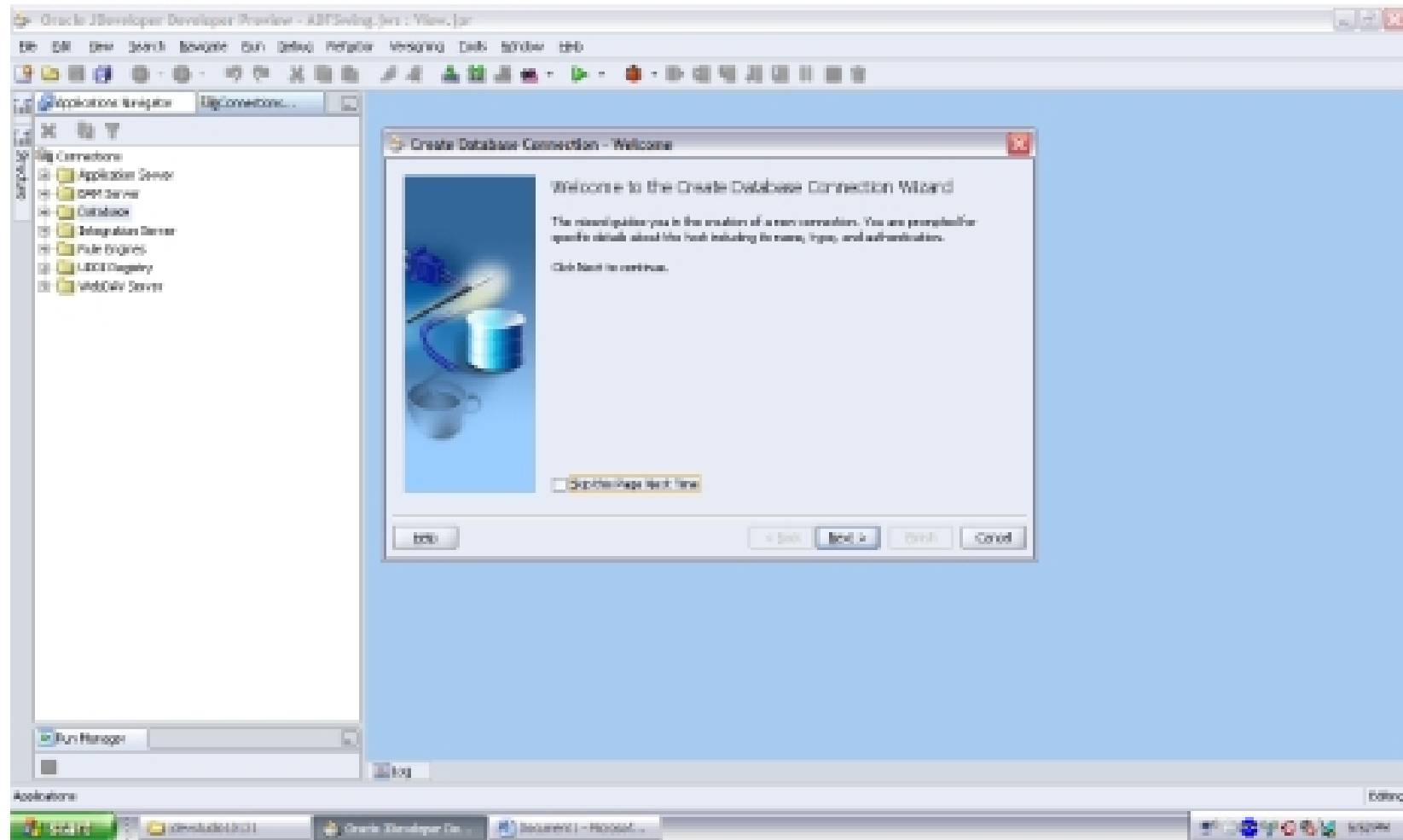


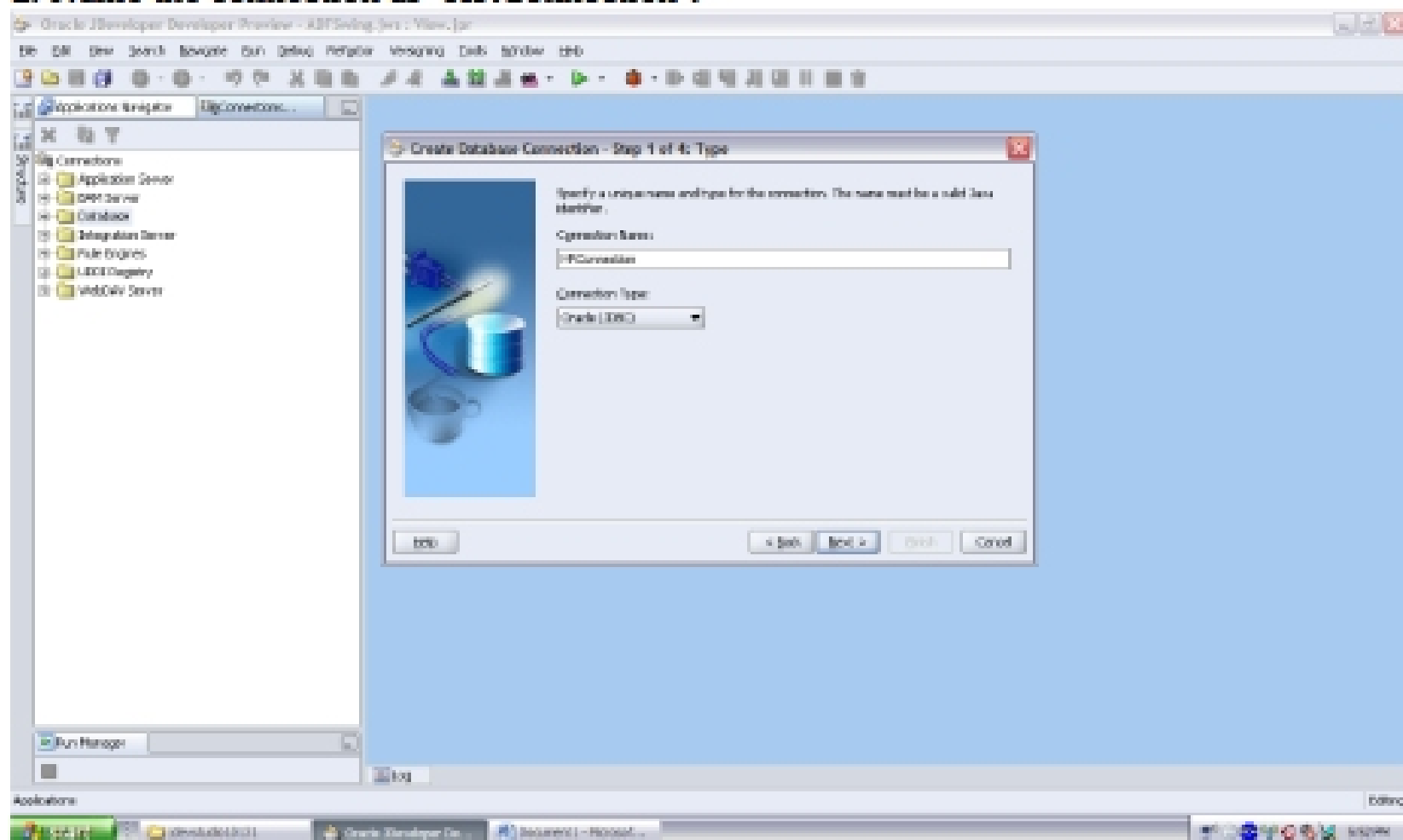
TUTORIAL – DATABASE DEVELOPMENT USING JDEVELOPER

Sameera Avilala (sameera@ksu.edu)

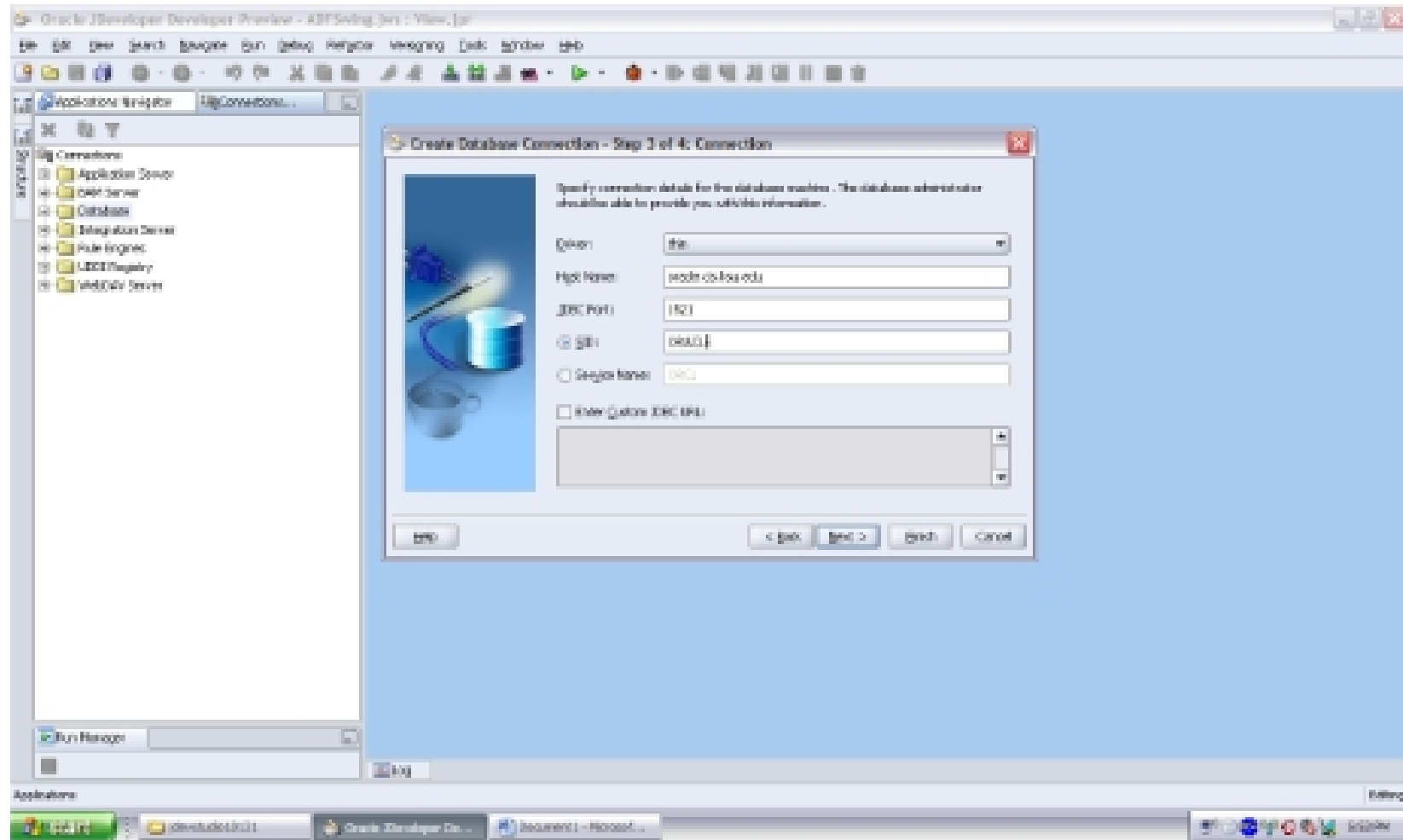
1. Create the database connection.



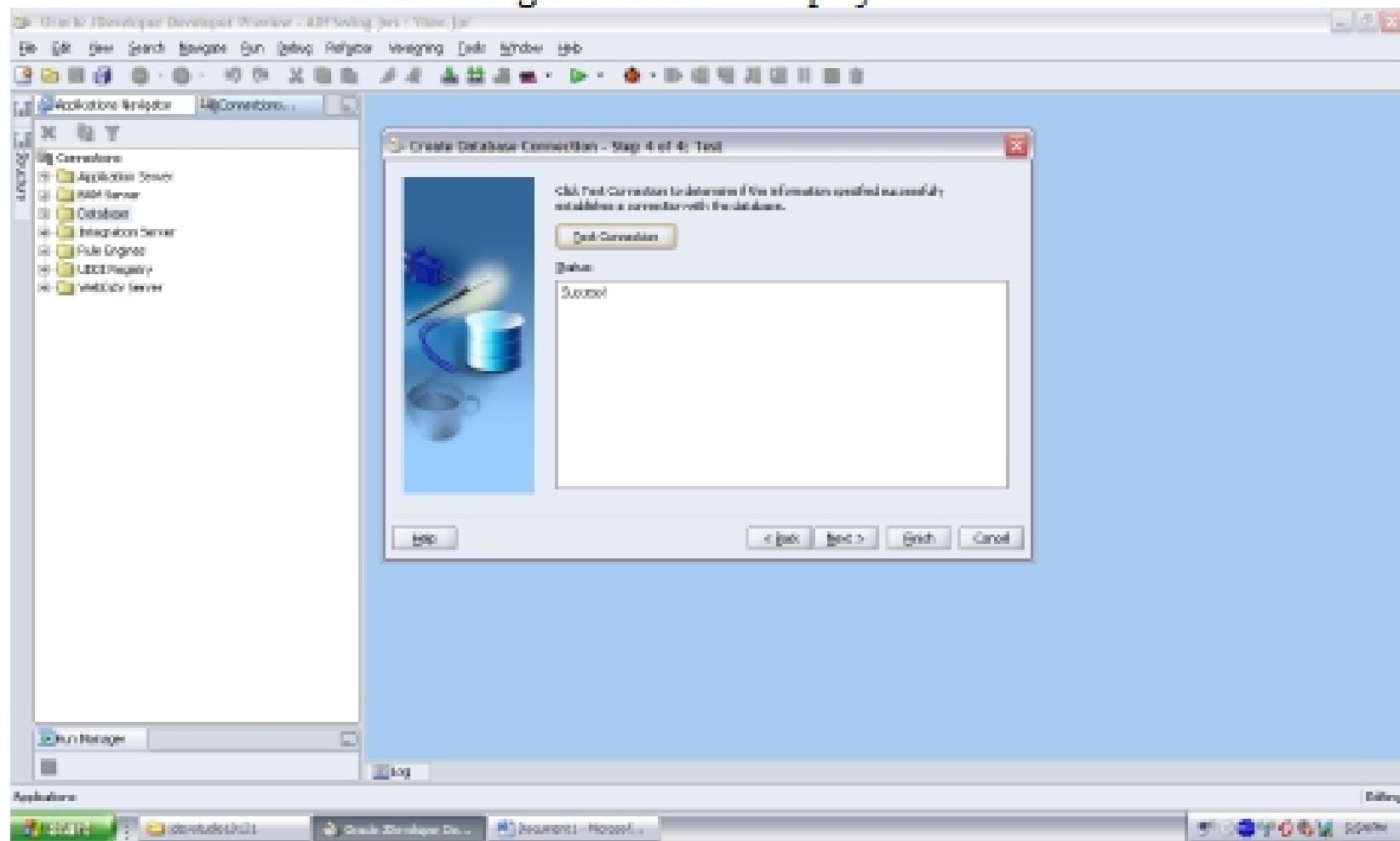
2. Name the connection as 'HRConnection'.



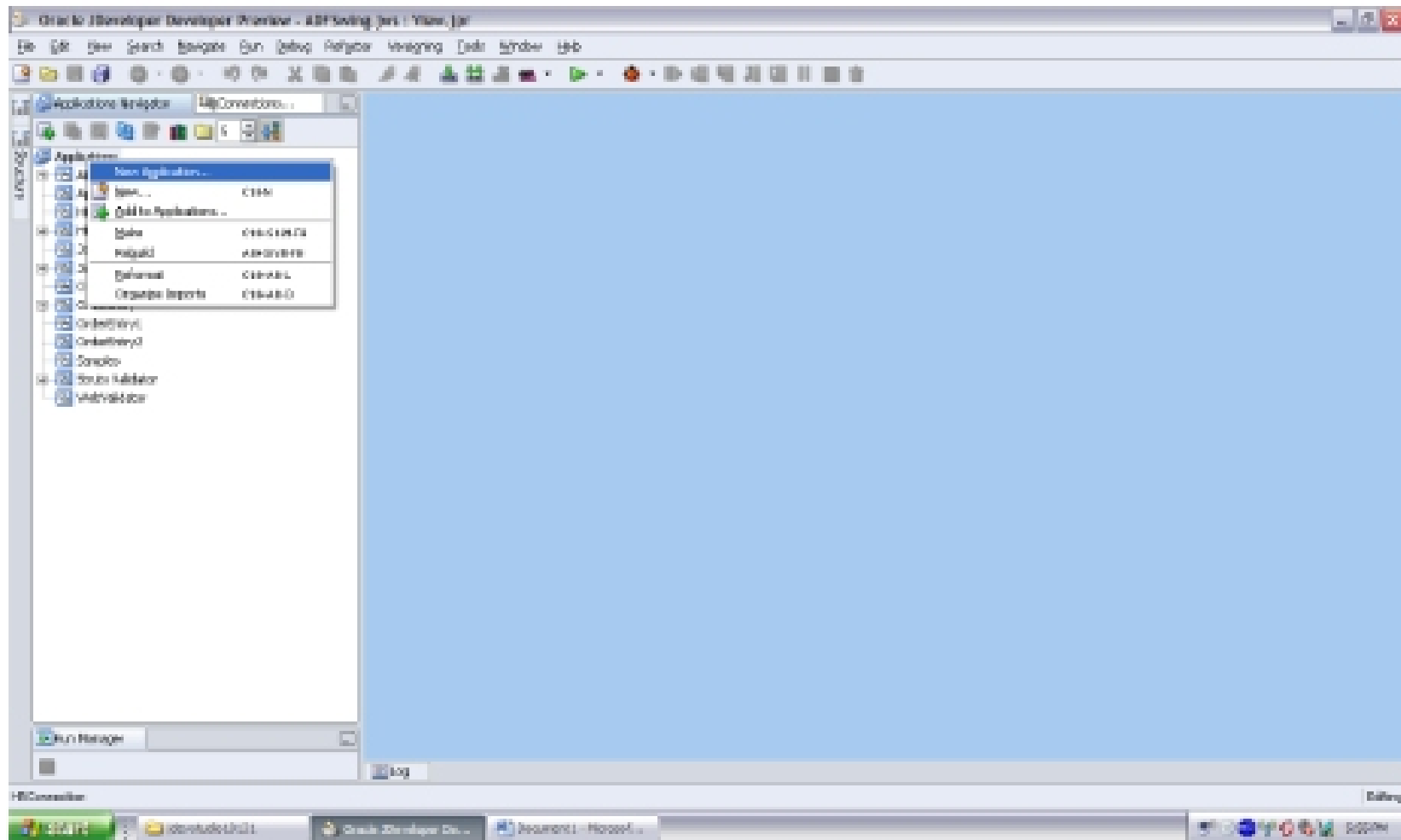
3. Enter the host name as oracle.cis.ksu.edu and hit next.



4. Click on 'Test Connection' to get the Success display.



5. Right Click on the applications and click on 'new application'.



6. Select the data model from Web application and move the 'database' from available to selected technologies.

