

Name: _____

SS # (optional): _____

PHA 5127

Final Exam KEY Fall 2002

On my honor, I have neither given nor received unauthorized aid in doing this assignment.

Name

Question/Points

1. _____ /12 pts
2. _____ /8 pts
3. _____ /12 pts
4. _____ /27 pts
5. _____ /20 pts
6. _____ /15 pts
7. _____ /20 pts
8. _____ /25 pts
9. _____ /15 pts
10. _____ /6 pts
11. 5 /5 Bonus pts

TOTAL _____ /160 (out 165 possible)

Name: _____

SS # (optional): _____

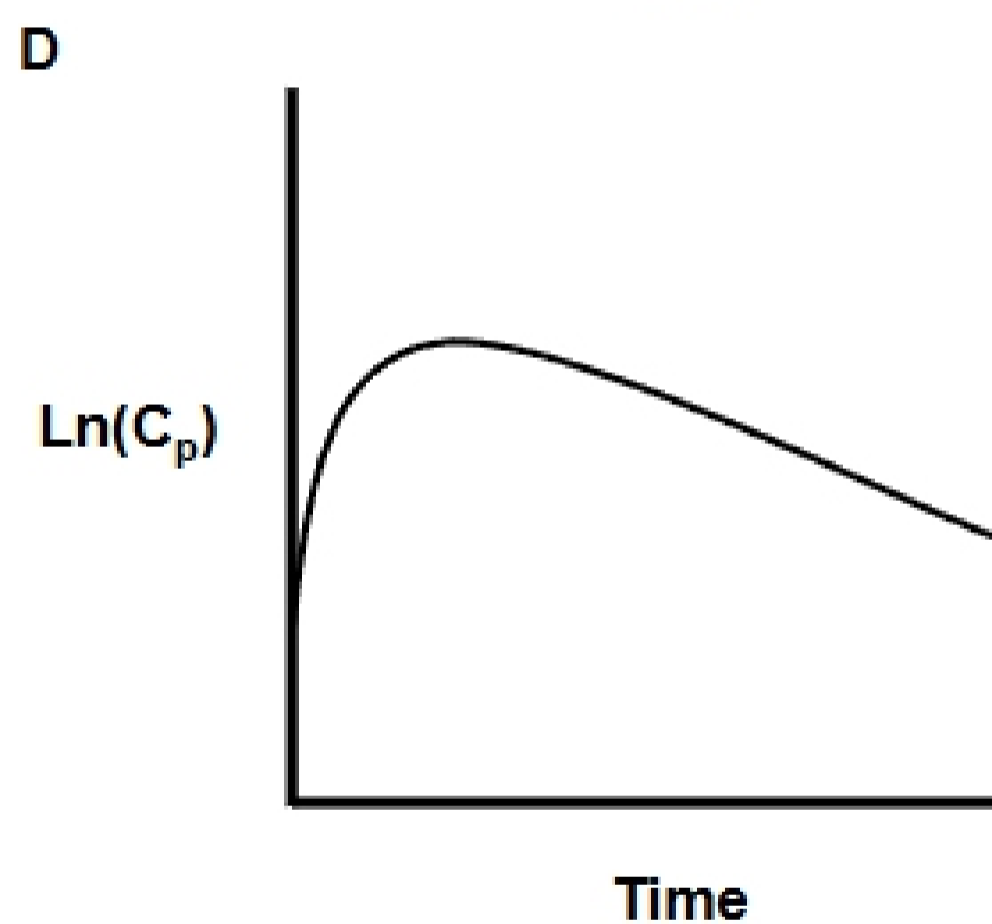
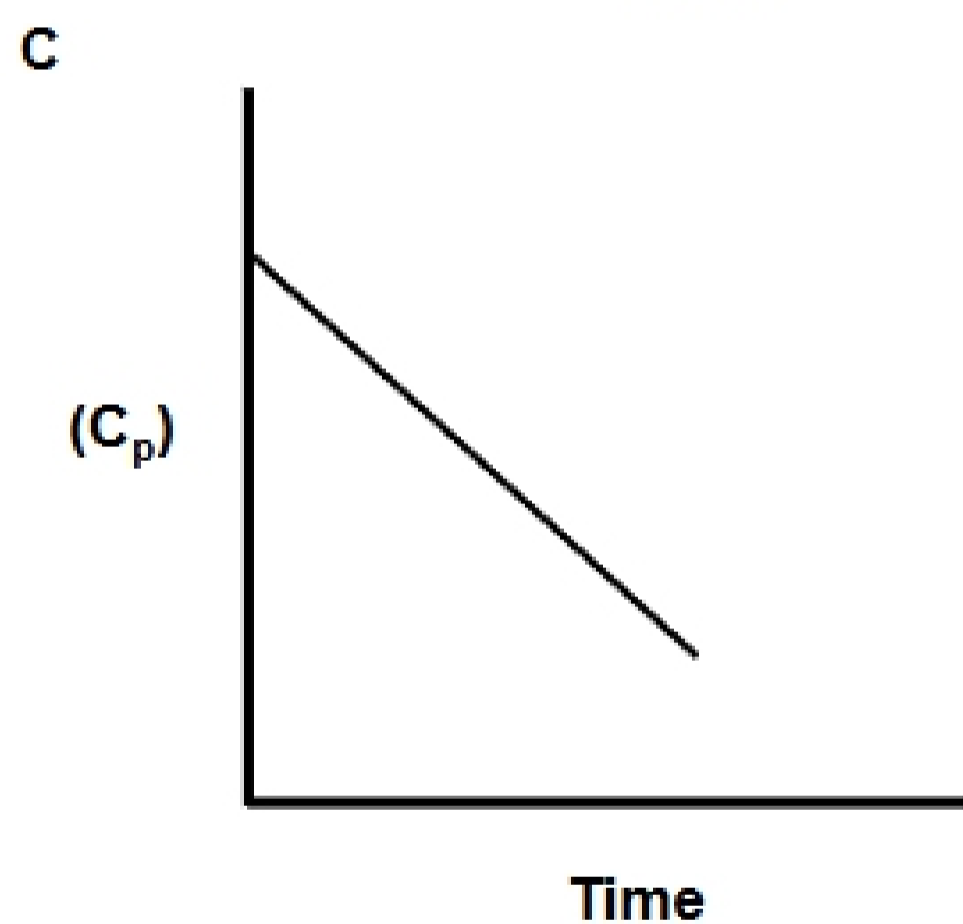
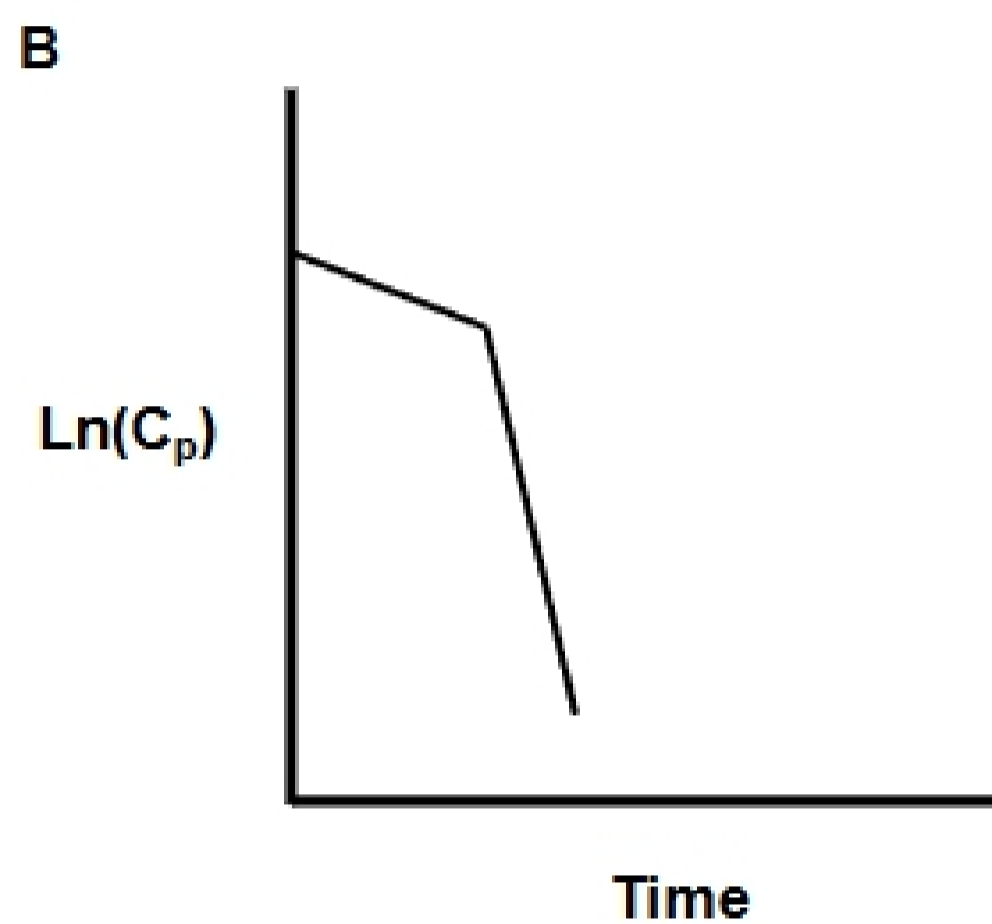
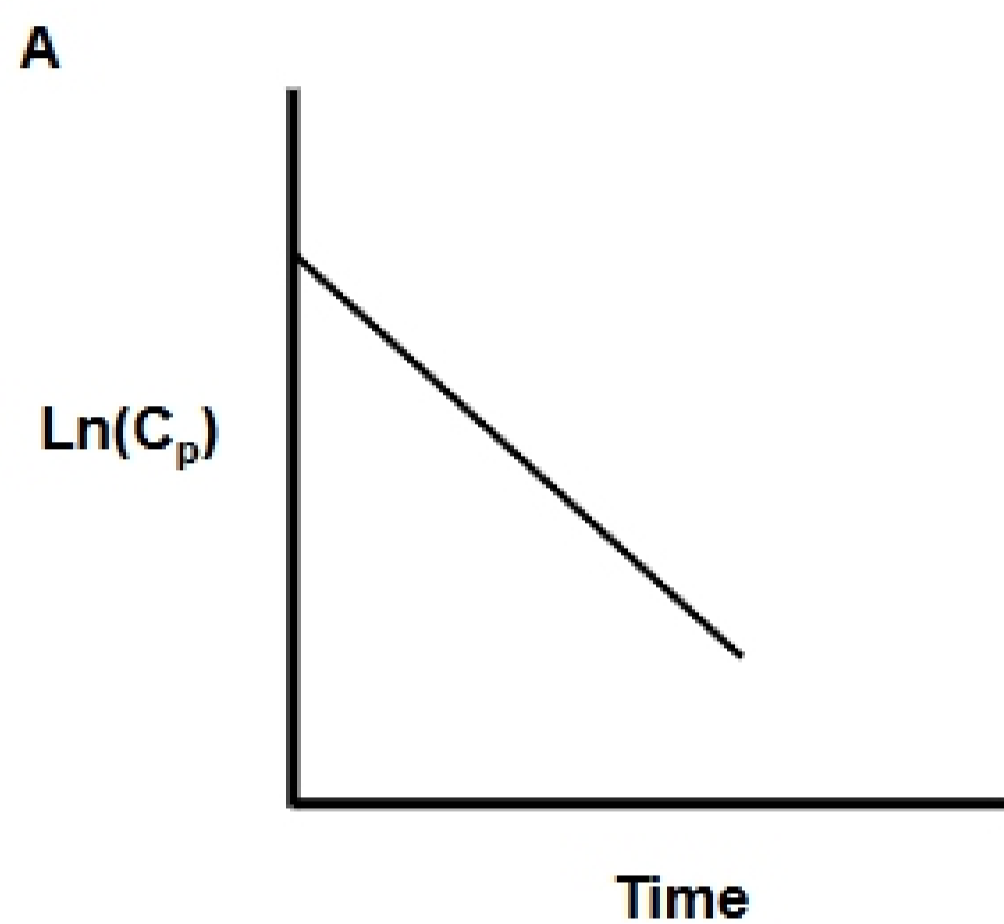
1.) Mark the following statements as True or False (12 points)

- T** **F** Increasing the dosing interval (τ) of an oral dosing regimen will cause the fluctuation to increase.
- T **F** If a patient's plasma protein binding is decreasing for a certain drug so will its volume of distribution (Assume no other changes).
- T **F** The absorption rate constant (k_a) is always larger than the elimination rate constant (k_e).
- T **F** For a drug which behaves like a two compartment body model drug, $V_{d_{ss}}$ is larger than $V_{d_{area}}$. (also called $V_{d\beta}$)
- T **F** The maximum value of renal clearance is that of the glomerular filtration rate.
- T** **F** Loading doses are more relevant for drugs with long half-lives.

Name: _____

SS # (optional): _____

- 2.) Which graph(s) best depicts a one-compartment body model drug after iv. administration? (8 points)



Answer(s): A