

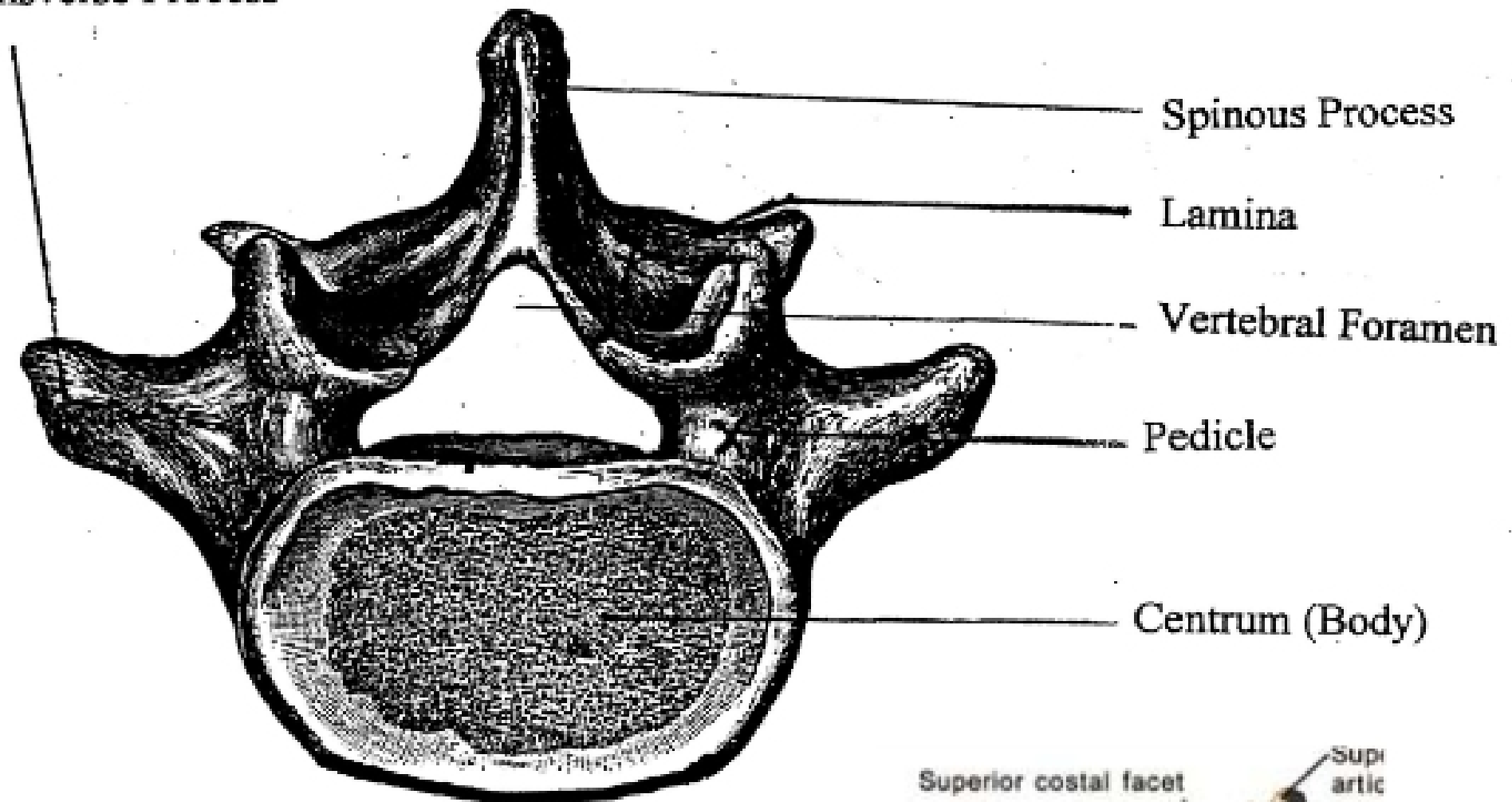
## STUDY GUIDE FOR LAB PRACTICAL # 2

Axial Bodies ( Go back in and put in articulation)

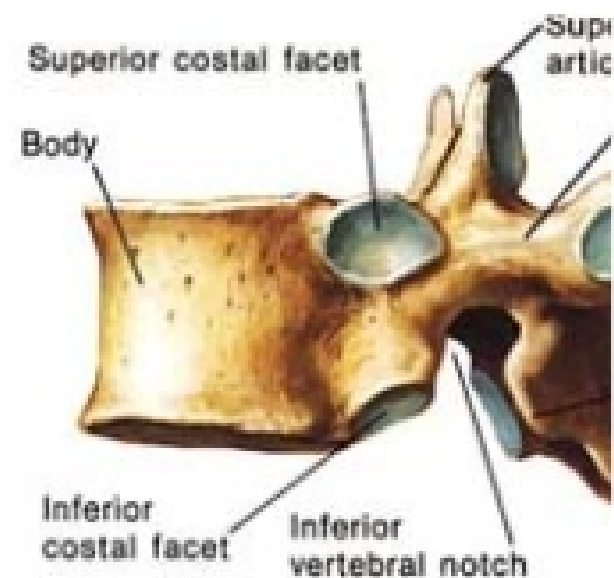
### A. Vertebrae (all vertebrae)

1. Pedicle: Attaches to the arch of the body
2. Lamina: The roof of the arch/ flat plate fused medially with spinous process
3. Spinous Process: Projecting horn
4. Vertebral Foramen: Center above the body (where spinal cord goes through)
5. Transverse Process: Extend laterally from each part of the arch
6. Superior Articular Facet: 2 facets on top of the planes (when spinous process is pointed down)
7. Inferior Articular Facet: 2 facets under the bottom planes (when spinous process is pointed down)
8. Intervertebral Foramen: Between two vertebrae on the sides
9. Body: The large portion rounded

Transverse Process



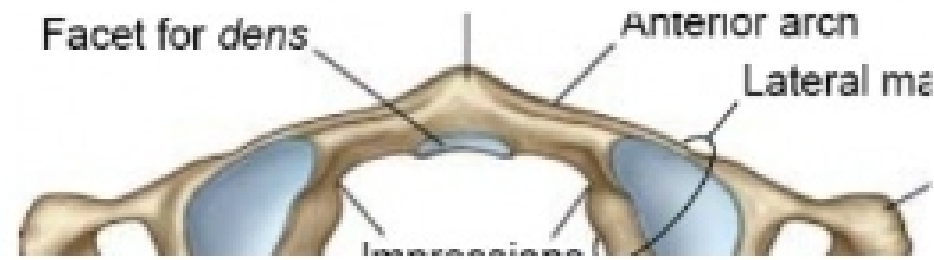
( Use for facets )



Chinnou 2000

B. Atlas (Vertebrae that holds head/ No body, no spinous process, huge ring shape)

1. Posterior Arch: Big arch
2. Anterior Arch: flat part
3. Facet of Dens: On anterior portion (Internally)
4. Transverse Foramen: The two tiny holes on either side of the vertebral foramen
5. Lateral Mass: the two kidney looking structures between the vertebral foramen and transverse foramen
6. Groove for Vertebral Artery and Cranial Nerve: between lateral masses and the arch



(Use for Facet of Den)

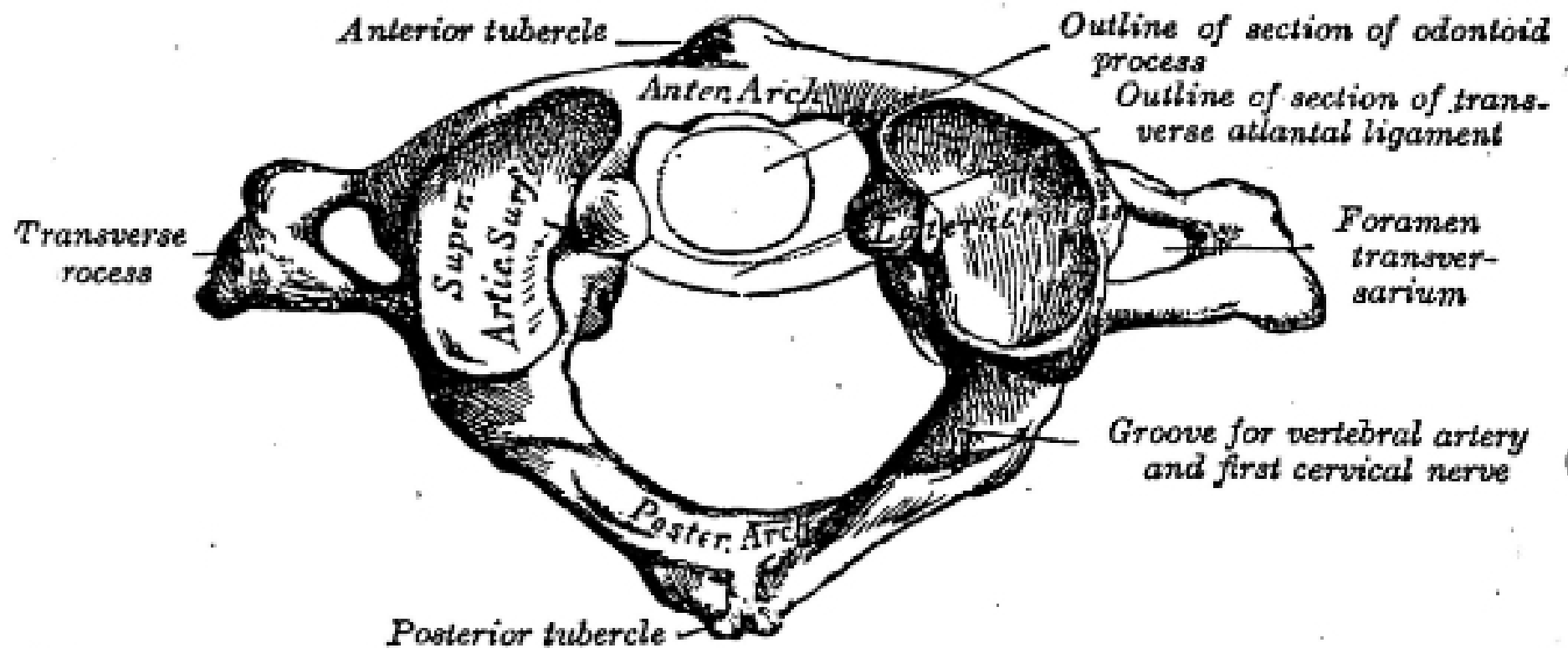
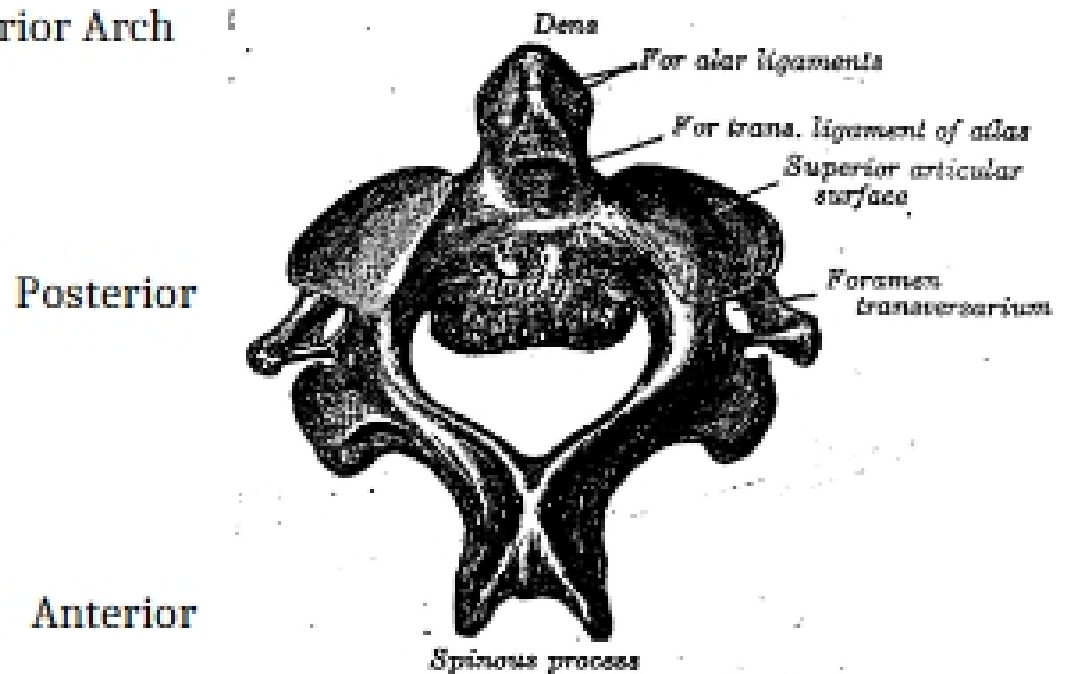


FIG. 82.—First cervical vertebra, or atlas.

C. Axis (Turns head/smaller foramen)

1. Dens: Projecting on the Anterior Arch
2. Posterior Arch: Big Arch
3. Anterior Arch: Flat Portion



a. 83.—Second cervical vertebra, or epistropheus, from above.

#### D. Cervical Vertebrae

1. Transverse Foramen: Foramen on either side for cranial nerves
2. Bifid Spinous Process: V-shape on spinous process ( diminishes closer to thoracic vertebrae )

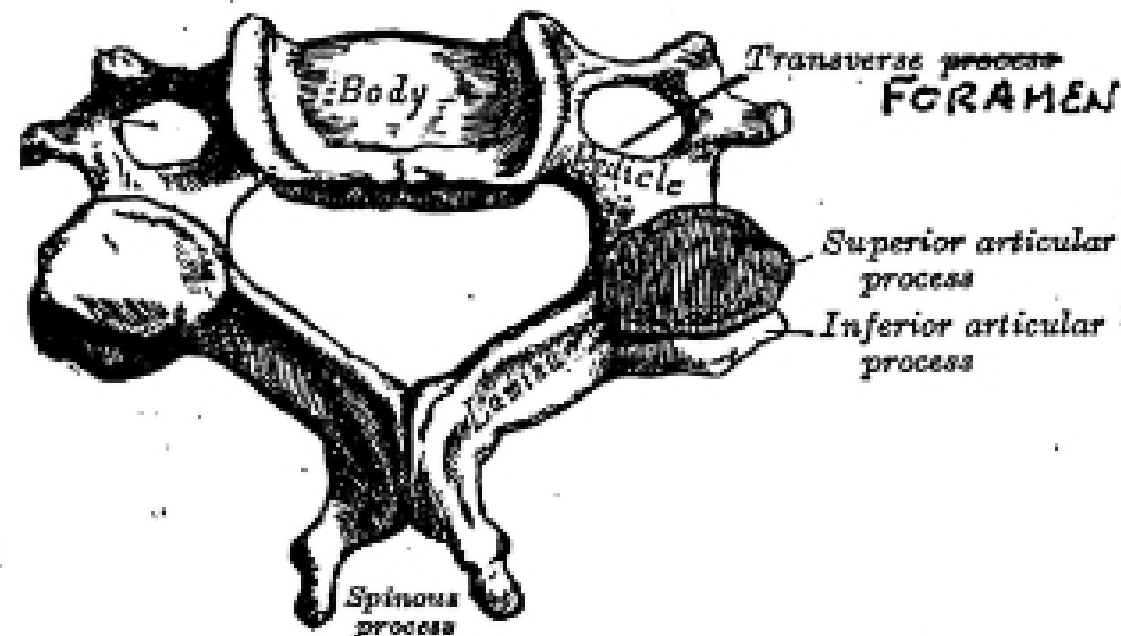


FIG. 80.—A cervical vertebra.

#### E. Thoracic Vertebrae

1. Articulating Facets for Ribs: Little indentions on the large wings/ transverse process
2. Demifacets( Superior and Inferior): Tiny indentions on the top and bottom of the body

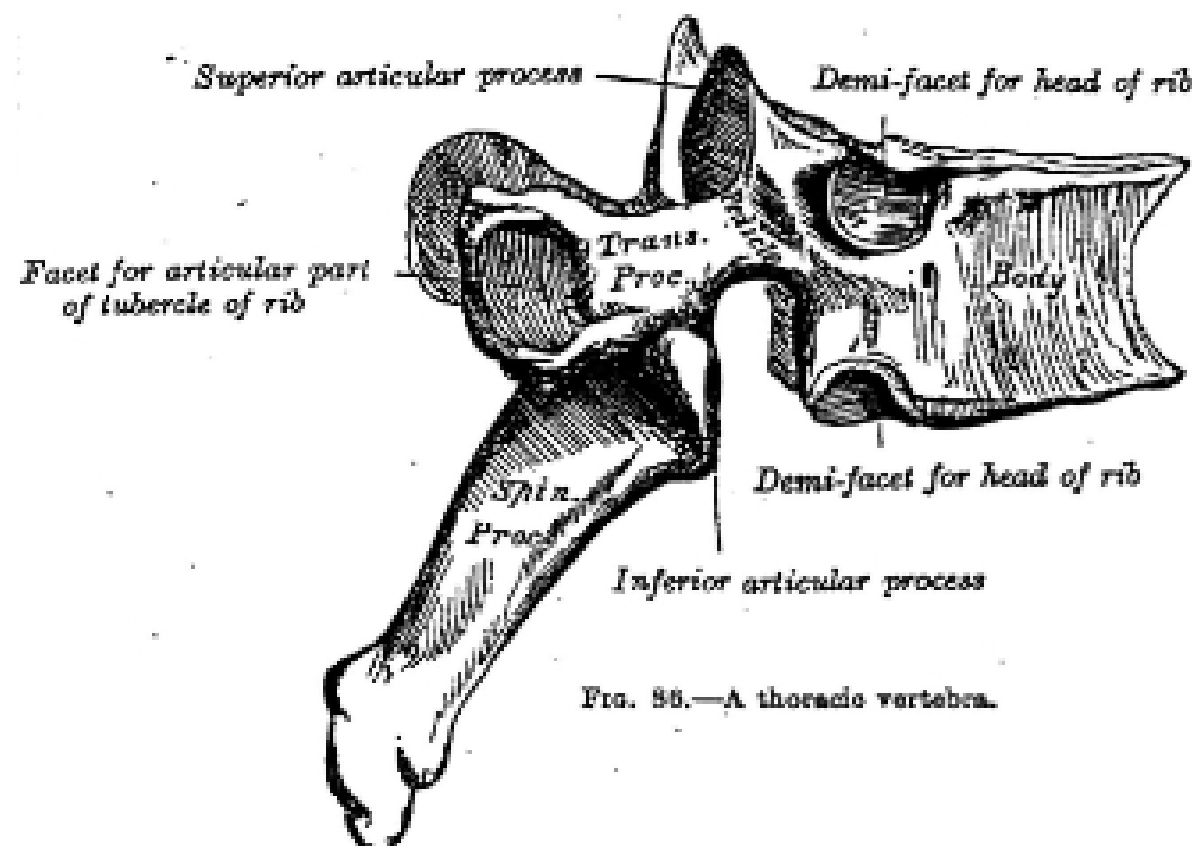


FIG. 86.—A thoracic vertebra.

#### F. Sacrum

1. Sacral Ala: Wings
2. Superior Articulating Facet: Two kidney shaped indentions on posterior side
3. Articular Surface: Medial to ( Auricular surface) rougher surface
4. Auricular surface: Almost on the literal sides in the top corner
5. Sacral Canal: Big whole that goes through it (midsagittal) nerves go through
6. Sacral Hiatus: End of Sacral Canal