

8

The Skeletal System: Articulations

Introduction

- The body cannot move without joints
- Movements are linked to the range of joint action
- Joints (**arthroses**) are connections between bones that may or may not permit movement
- Two bones may be in direct contact with each other or separated by:
 - Cartilage
 - Fluid
 - Fibrous tissue

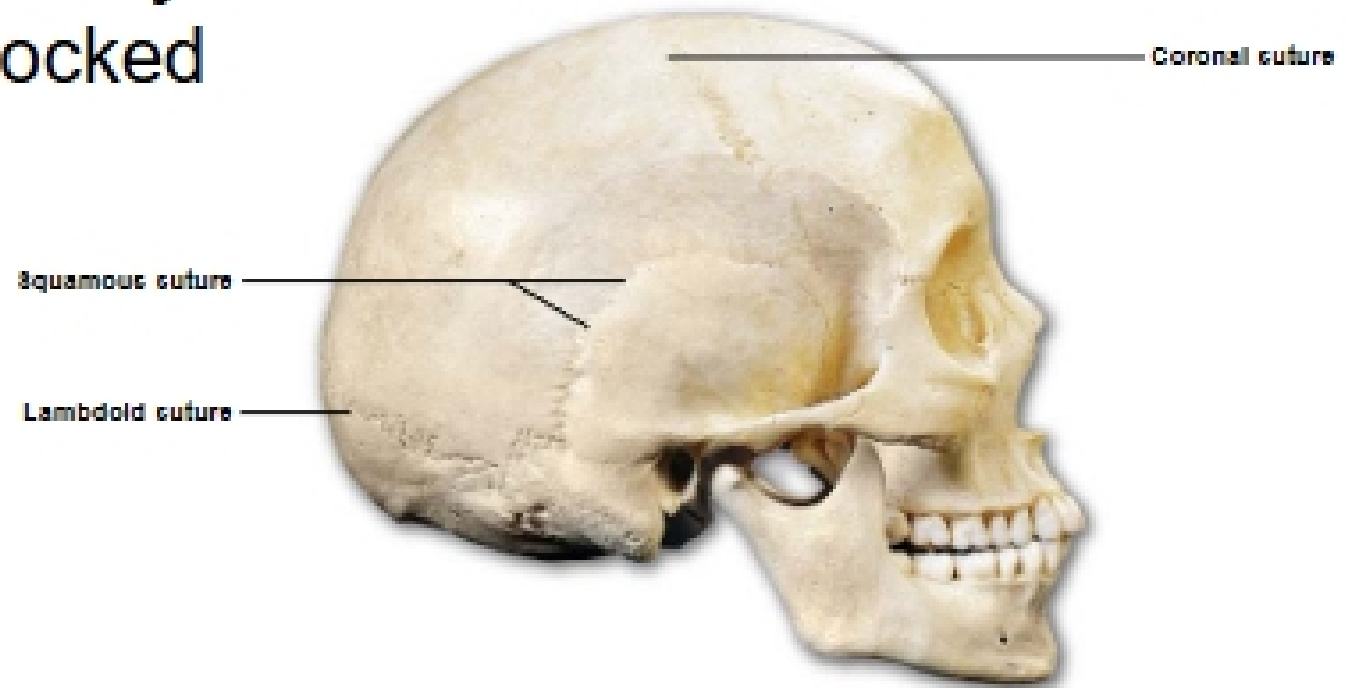
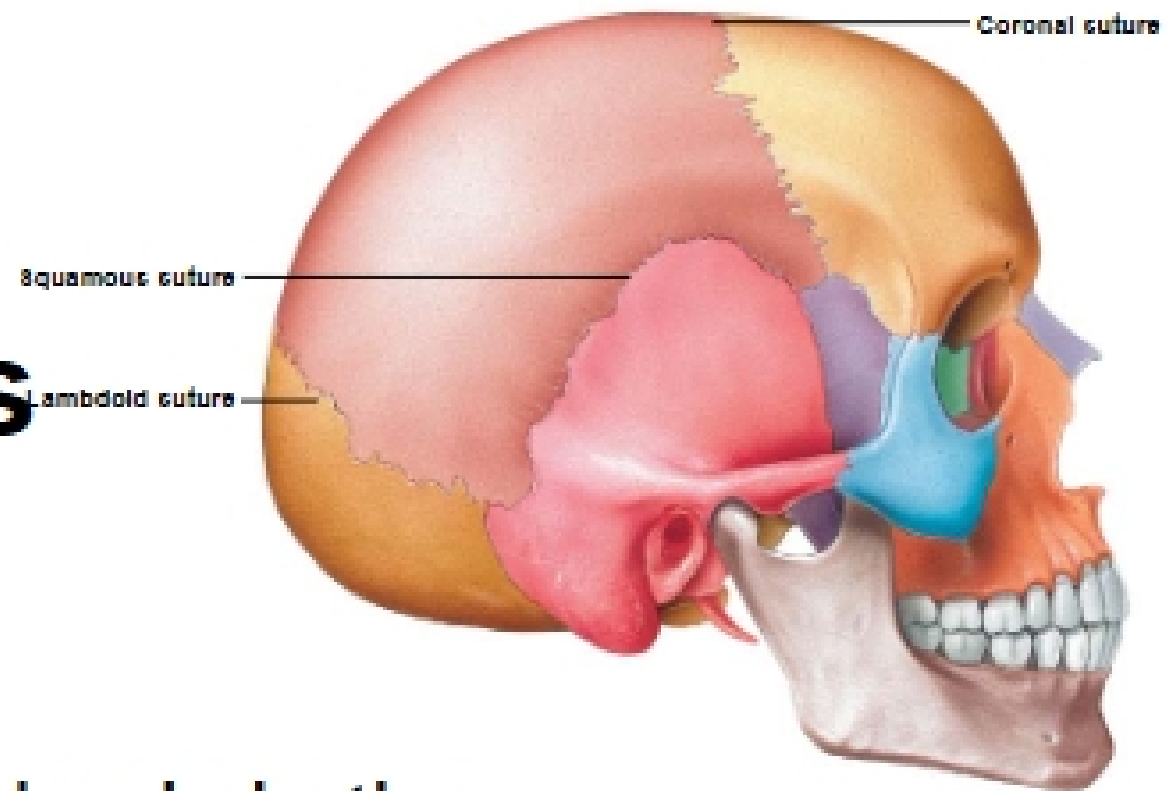
Figure 6.3c The Adult Skull

**Joint classification
based on: function**

Synarthrosis

immovable

Sutures (joints found only in the skull) Bones are interlocked together



e Lateral view of the bones of the adult skull