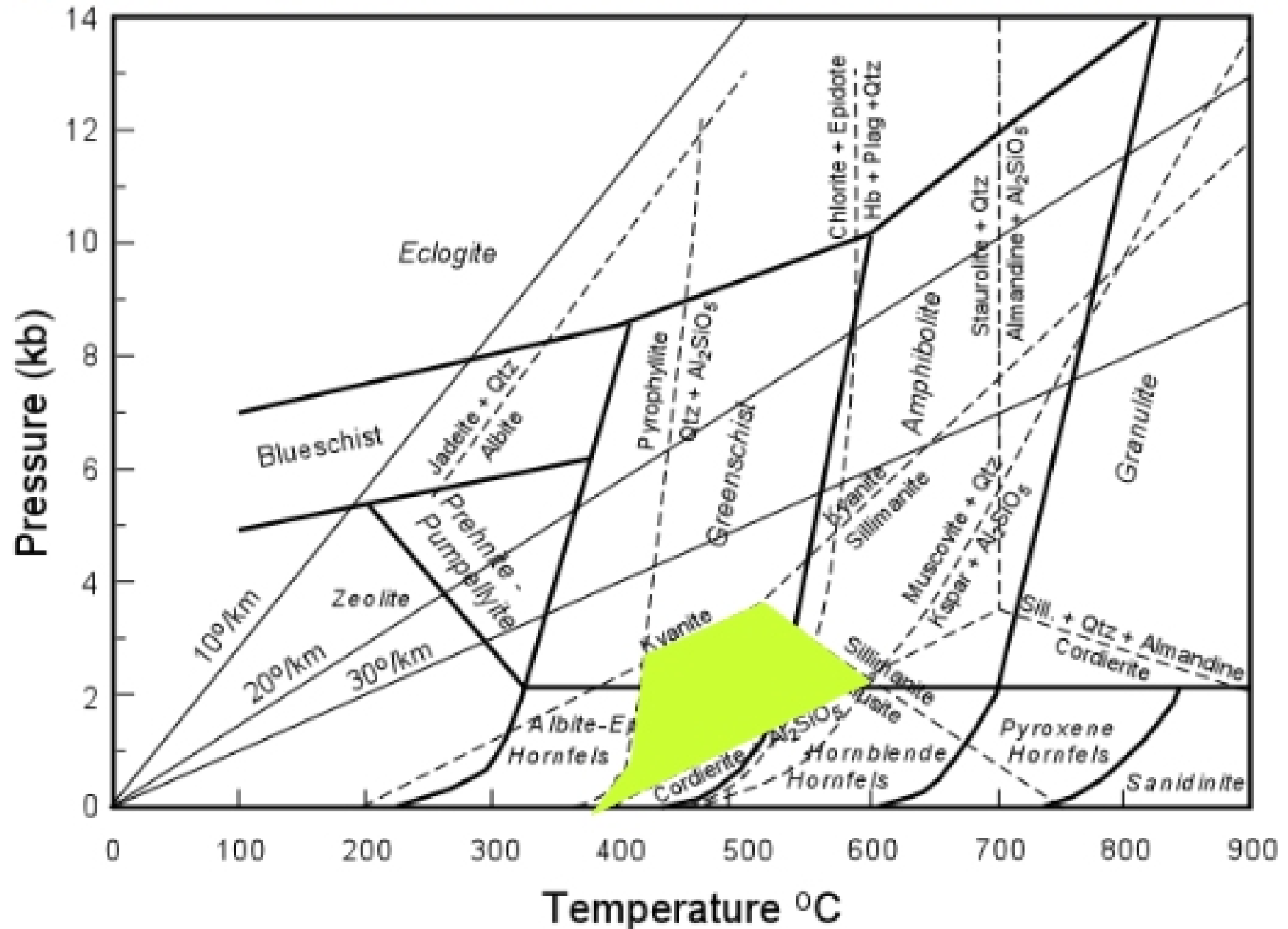
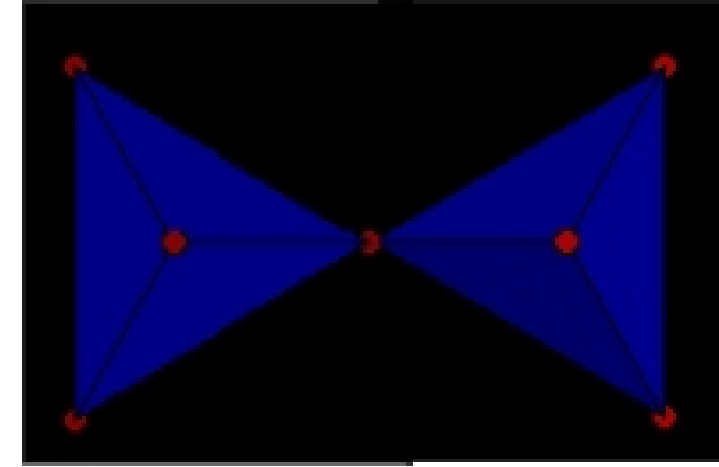


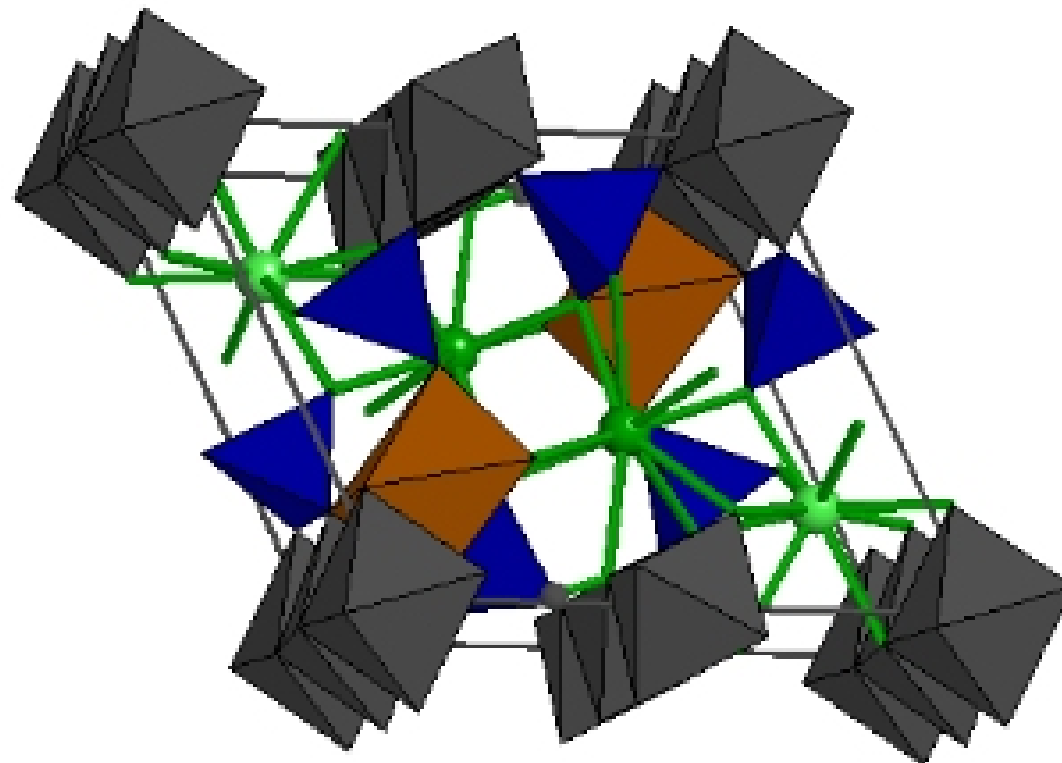
- What if we had staurolite and andalusite together? What conditions would that indicate?



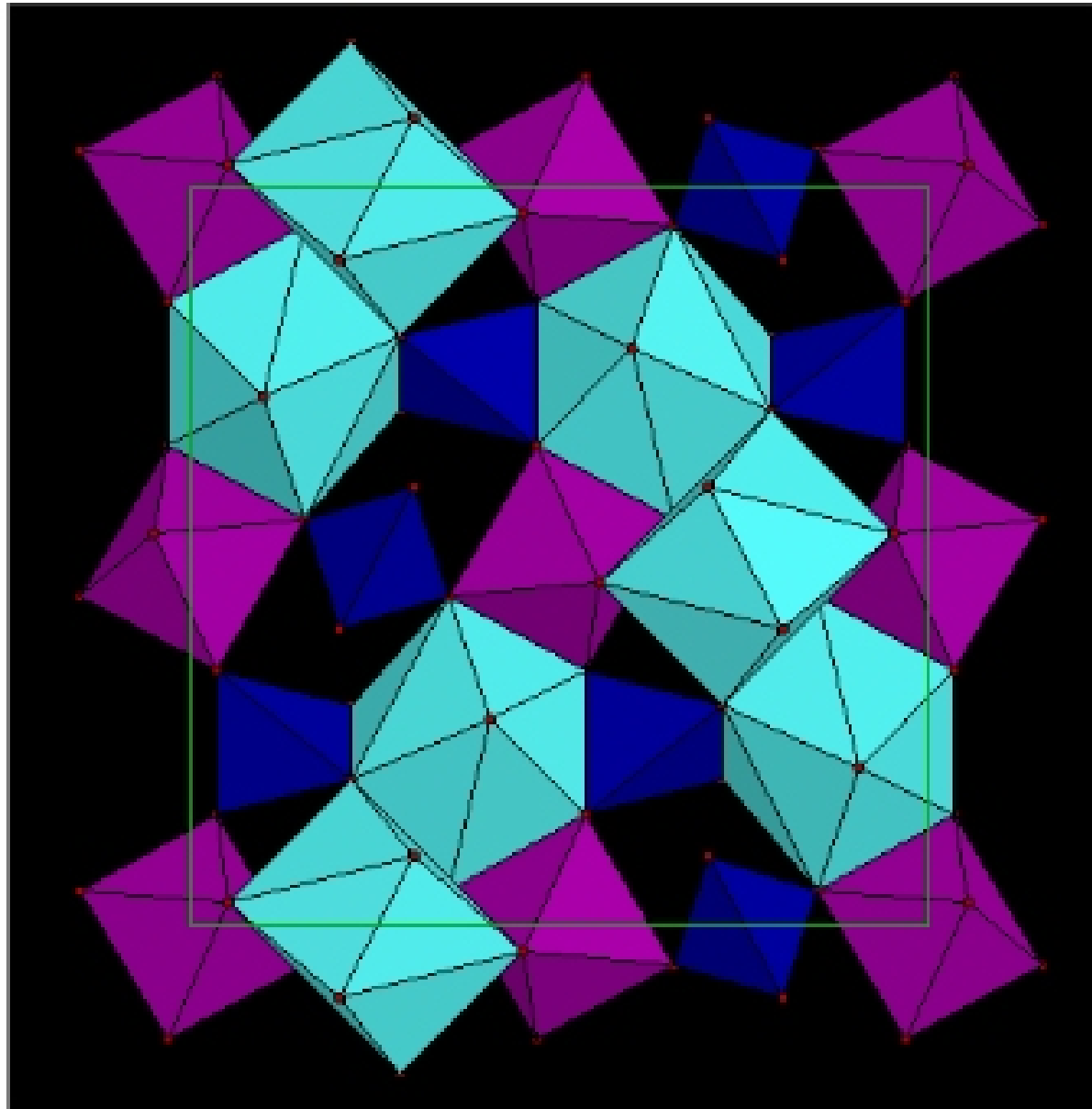
Epidote Group



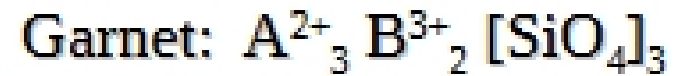
- Sorosilicates (paired silicate tetrahedra)
- Include the mineral Epidote $\text{Ca}_2\text{FeAl}_2\text{Si}_3\text{O}_{12}(\text{OH})$, Zoisite ($\text{Ca}_2\text{Al}_3\text{Si}_3\text{O}_{12}(\text{OH})$) and clinozoisite (polymorph)



Garnets



Garnet (001) view blue = Si purple = A turquoise = B



“Pyrospites” - B = Al



“Ugrandites” - A = Ca



Occurrence:

Mostly metamorphic

Some high-Al igneous

Also in some mantle peridotites