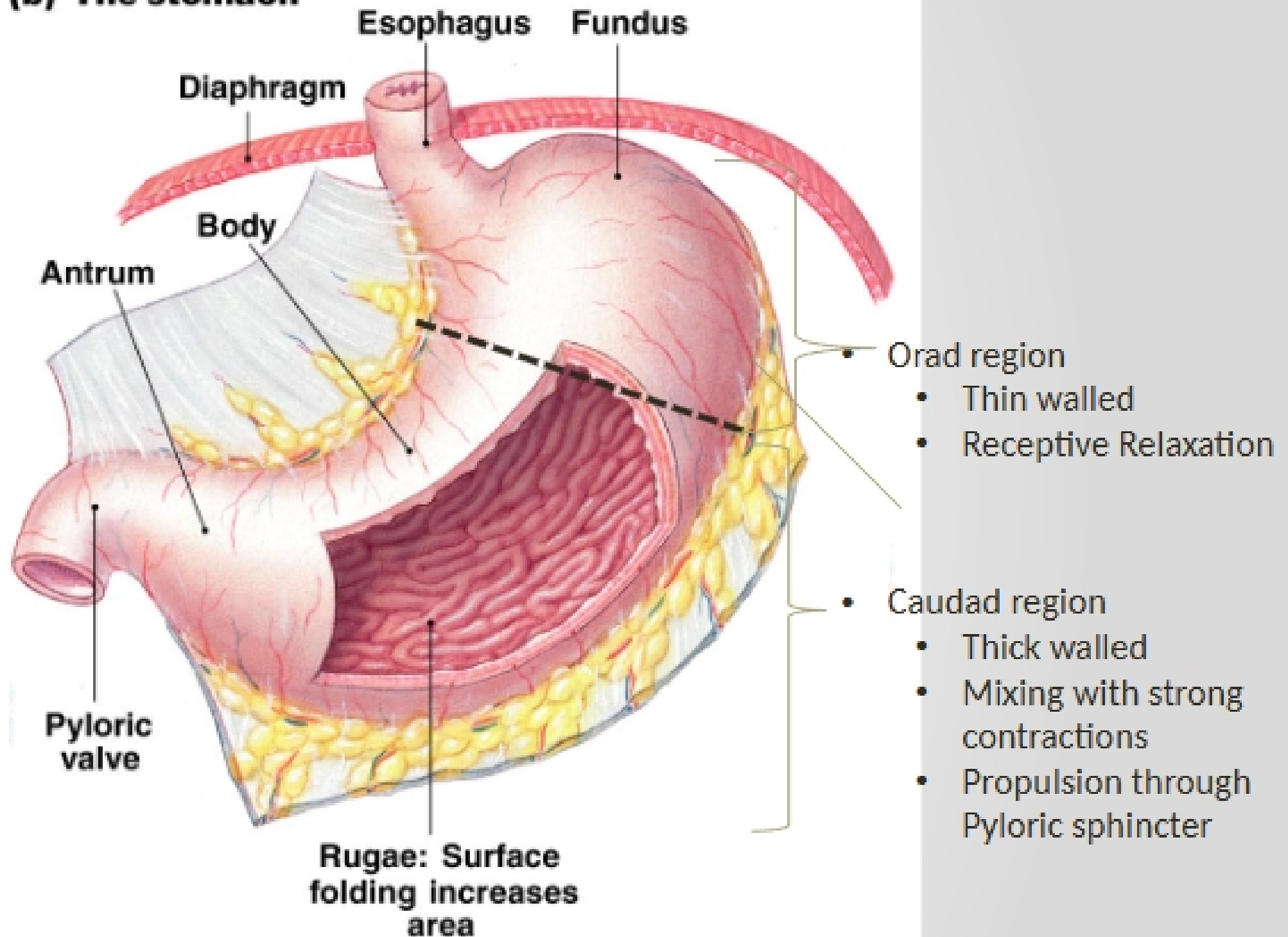
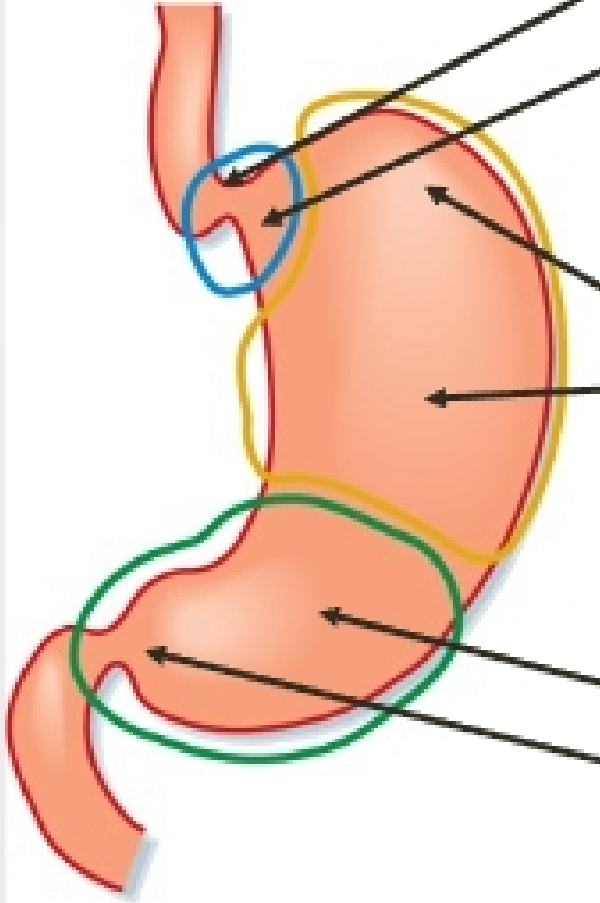


Gastric Phase of Digesting a Meal

(b) The stomach



The Major Regions of the Stomach



Region	Luminal secretion	Motility
LES* and cardia *LES is part of the esophagus	Mucus HCO_3^-	Prevention of reflux Entry of food Regulation of belching
Fundus and body	H^+ Intrinsic factor Mucus HCO_3^- Pepsinogens Lipase	Reservoir Tonic force during emptying
Antrum and pylorus	Mucus HCO_3^-	Mixing Grinding Sieving Regulation of emptying