

SET YOUR iCLICKER to Frequency CC:

- 1) Press and hold the power button until the blue light blinks, then release.
- 2) With the blue light blinking, press CC (press the C key twice). Watch for the green light. Blue light will stop blinking.
- 3) Your clicker is now set to frequency CC, and you are ready to vote.
- 4) Do not turn off your clicker or you will have to reset frequency at next question.

Question: Did you correctly set your clicker to frequency CC?

- A) Yes! I am able to vote.
- B) No! I can't vote. How am I supposed to vote B when I can't vote?

Survey Question:

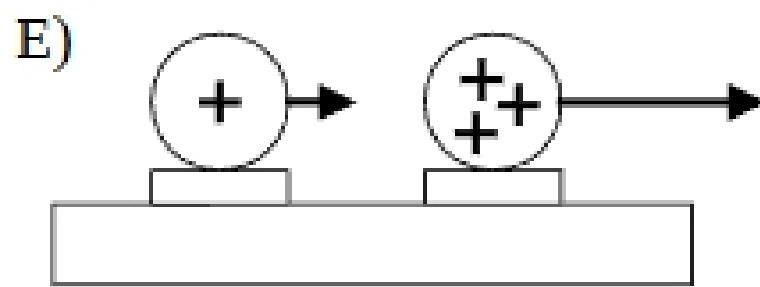
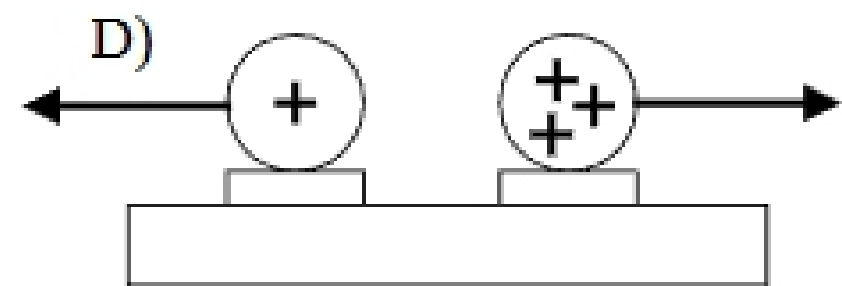
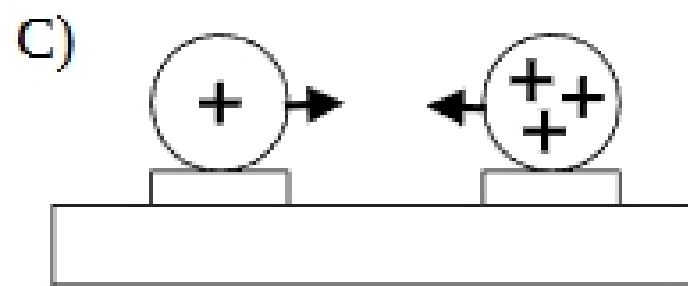
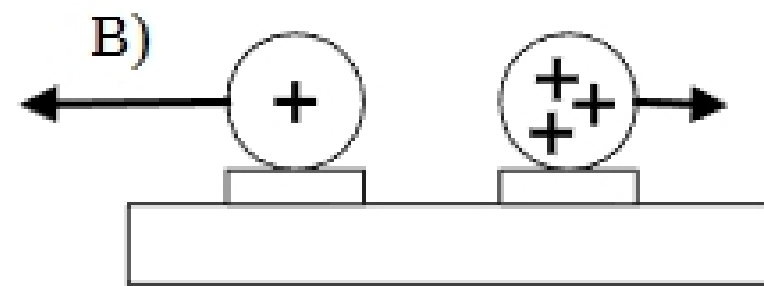
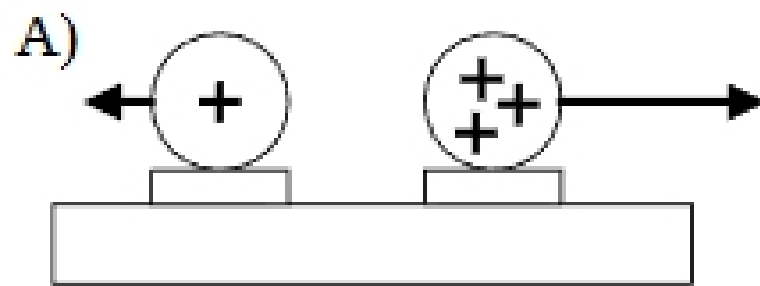
What was your last physics course?

- A) I took PHYS2010 last semester.
- B) I took PHYS2010 or PHYS1110 at CU, but not last semester
- C) I took a College-level Physics 1 class some place other than CU
- D) I placed out of College Physics 1 with AP credit
- E) I never took a Physics 1 course: Holy Mackerel! I'm in the wrong course!

Have you ever used CAPA (online homework) before?

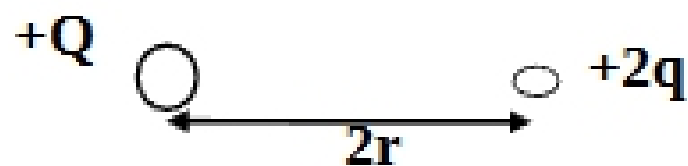
- A) Yes
- B) No

Q16-1. Two uniformly charge spheres are attached to frictionless pucks on an air table. The charge on sphere 2 is three times the charge on sphere 1. Which force diagram correctly shows the magnitude and direction of the electrostatic forces on the two spheres?



Q16-2.

A charge $+Q$ is fixed in space. A second charge $+q$ is brought a distance r away. Then $+q$ charge is removed and another charge $+2q$ is brought a distance $2r$ away. Then the $+2q$ charge is removed and a charge $+5q$ is brought a distance $2r$ away.



Which charge feels the largest force?

A) $+q$

B) $+2q$

C) $+5q$

D) Two of the charges feel the same size force.