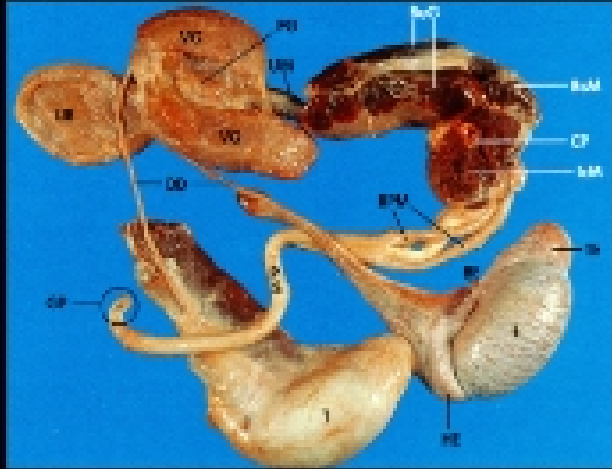
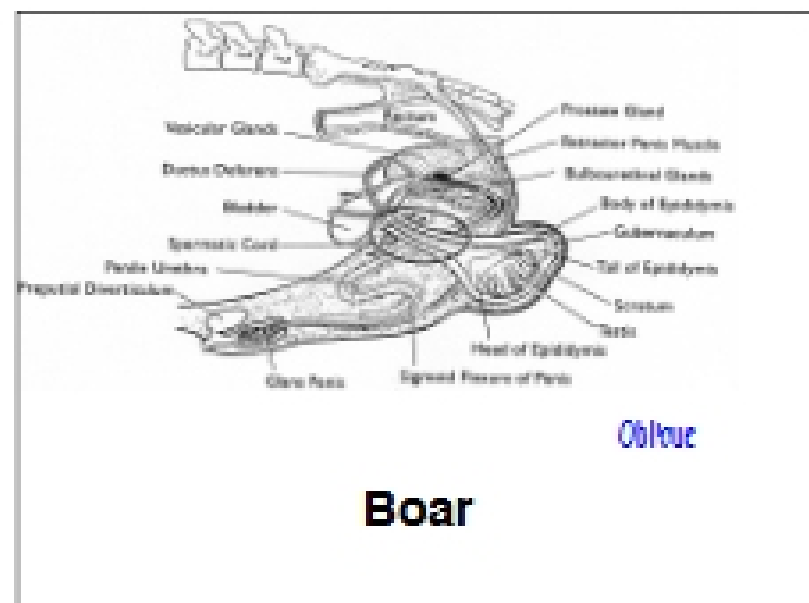
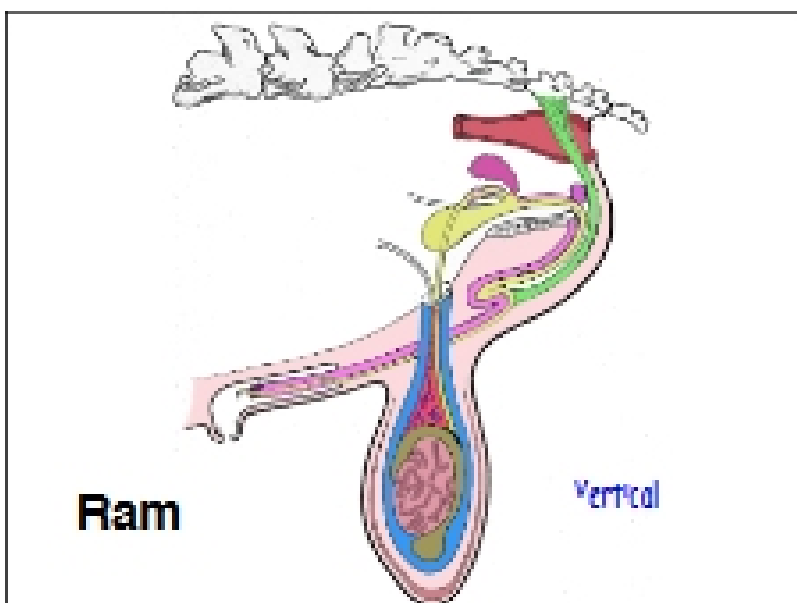
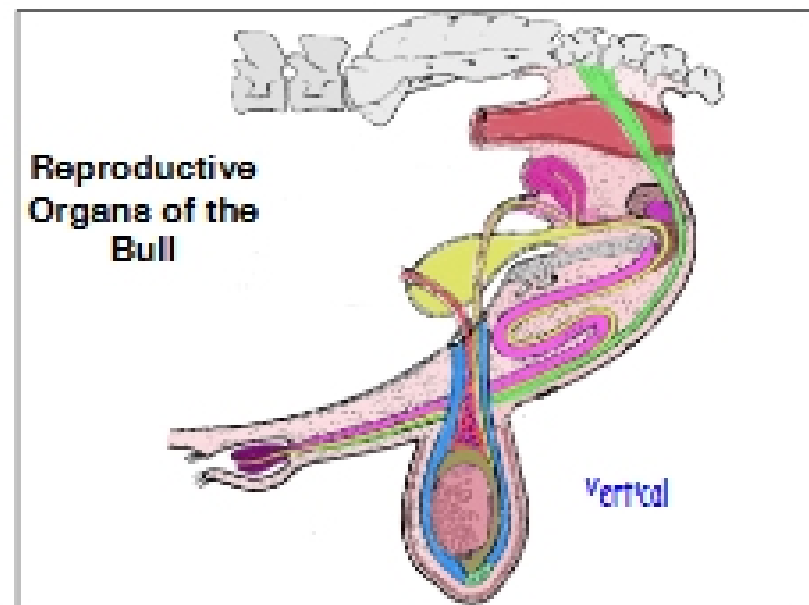
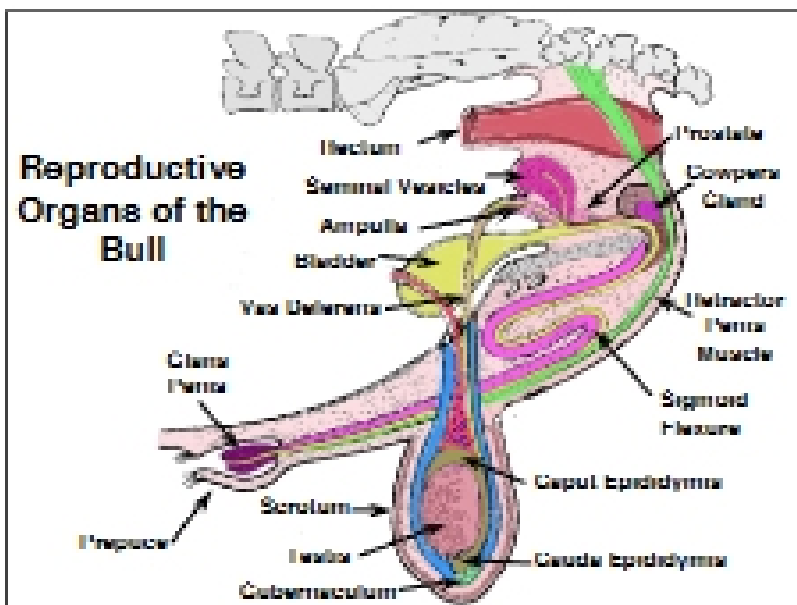


**Animal / Dairy Science 434**  
**Lec 4: Comparative Male Anatomy**



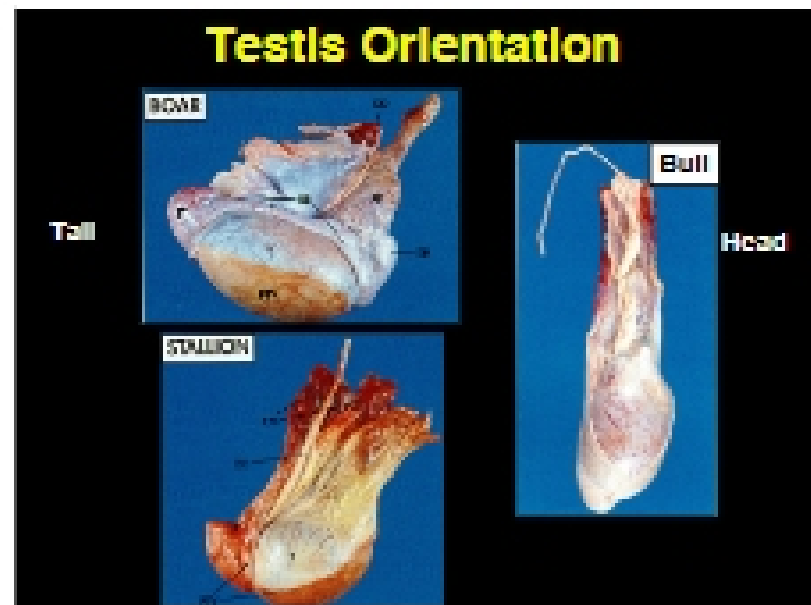
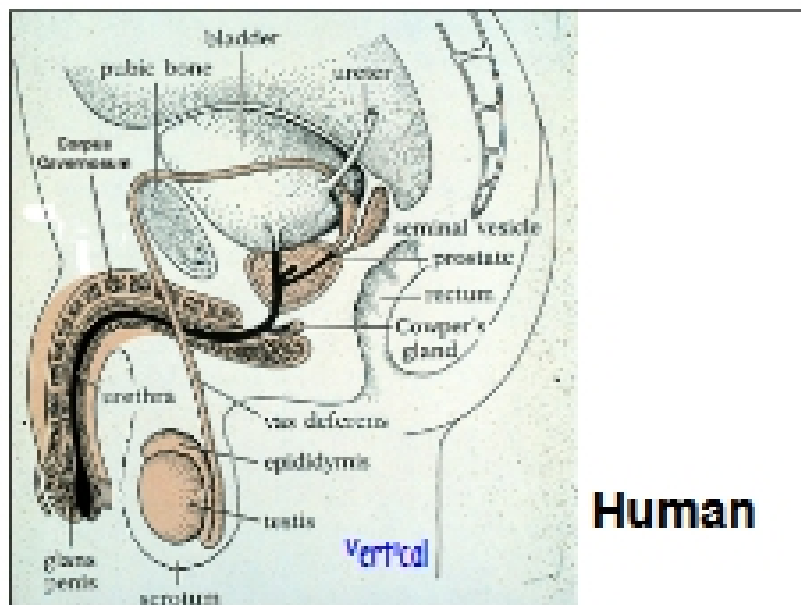
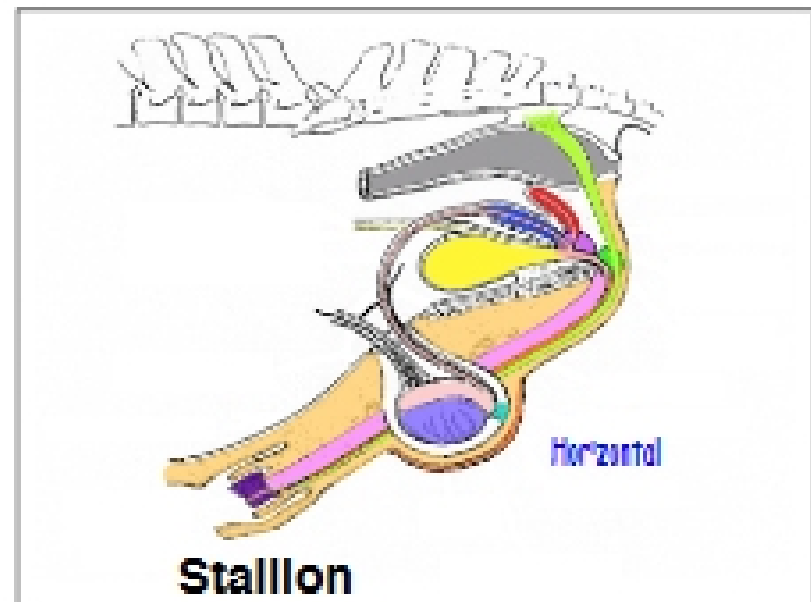
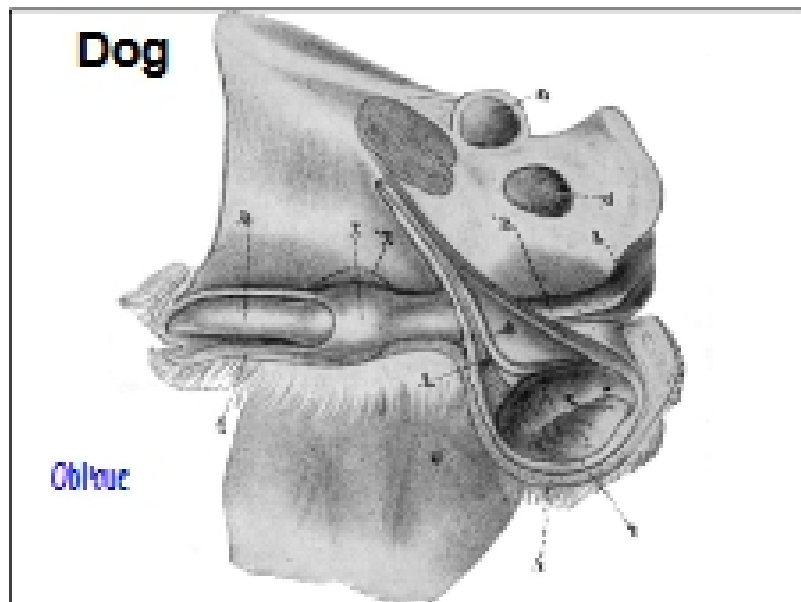
**Testis**

| Species  | Testis Wt (grams) | % Of Body Wt. | Orientation |
|----------|-------------------|---------------|-------------|
| bull     | 300+              | .03           | vertical    |
| ram      | 250               | .3            | vertical    |
| boar     | 350               | .2            | oblique     |
| stallion | 200               | .03           | horizontal  |
| dog      | 25                | .2            | oblique     |
| rabbit   | 2.5               | .1            | vertical    |
| human    | 25                | .03           | vertical    |



**Ram**

**Boar**



| Testis   |                    |               |             |
|----------|--------------------|---------------|-------------|
| Species  | Testis Wt. (grams) | % Of Body Wt. | Orientation |
| bull     | 300+               | .03           | vertical    |
| ram      | 250                | .3            | vertical    |
| boar     | 350                | .2            | oblique     |
| stallion | 200                | .03           | horizontal  |
| dog      | 25                 | .2            | oblique     |
| rabbit   | 2.5                | .1            | vertical    |
| human    | 25                 | .03           | vertical    |

