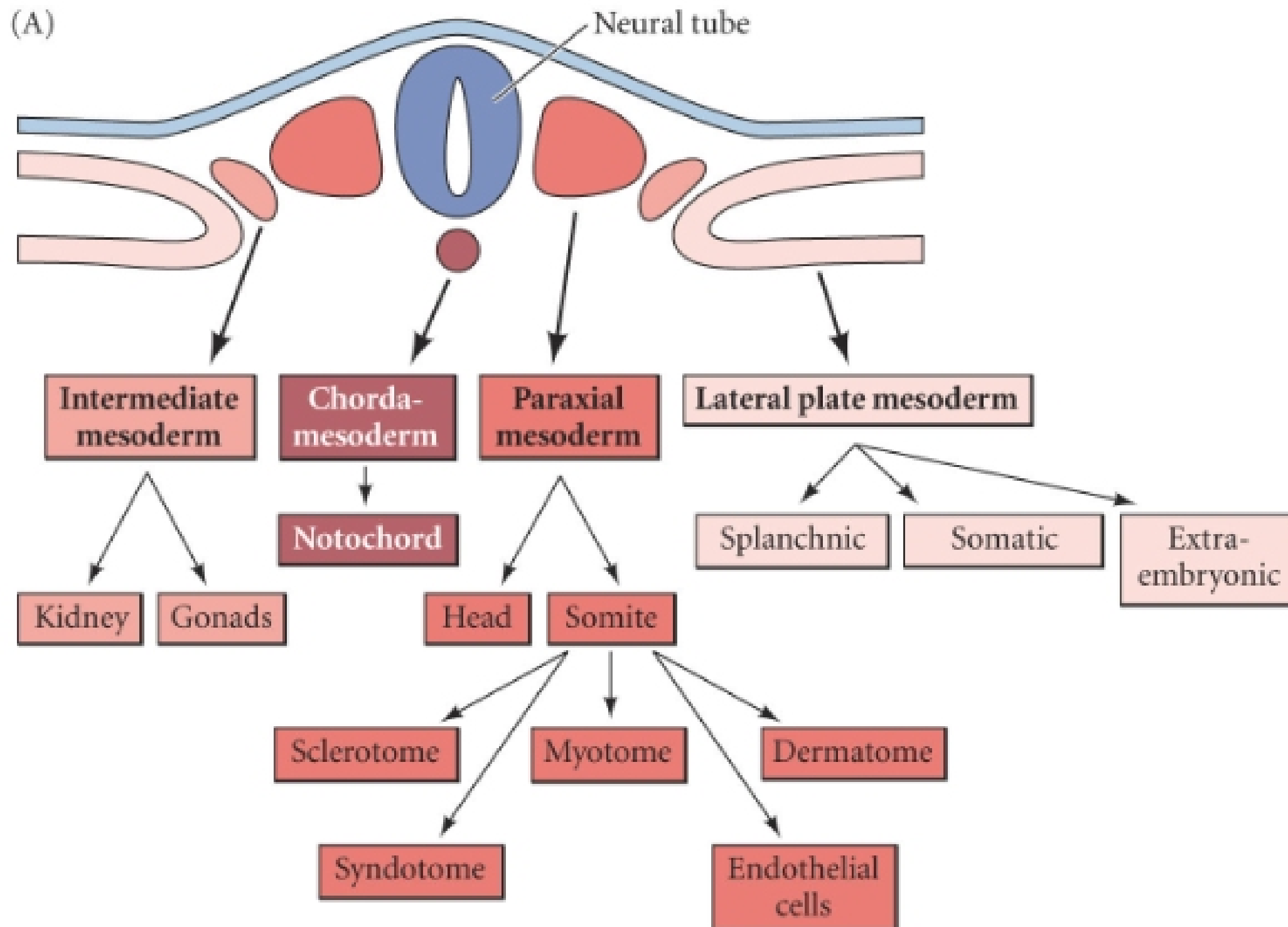


CHAPTER 14-1, PARAXIAL MESODERM: THE SOMITES AND THEIR DERIVATIVES

ZOO3603C

The major lineages of the amniote mesoderm



Four regions of the trunk mesoderm at neurulation

1. **Chordamesoderm:** Notochord inducing neurulation and establishing the anterior-posterior body axis.
2. **Paraxial mesoderm** (or somitic mesoderm): Somites producing bone, muscle, cartilage and dermis in the back
3. **Intermediate mesoderm:** Urogenital system consisting kidneys, gonads and their associated ducts.
4. **Lateral plate mesoderm:** Circulatory system consisting heart, blood vessel and blood cells.