

GEHS 7500

Air Sampling & Analysis

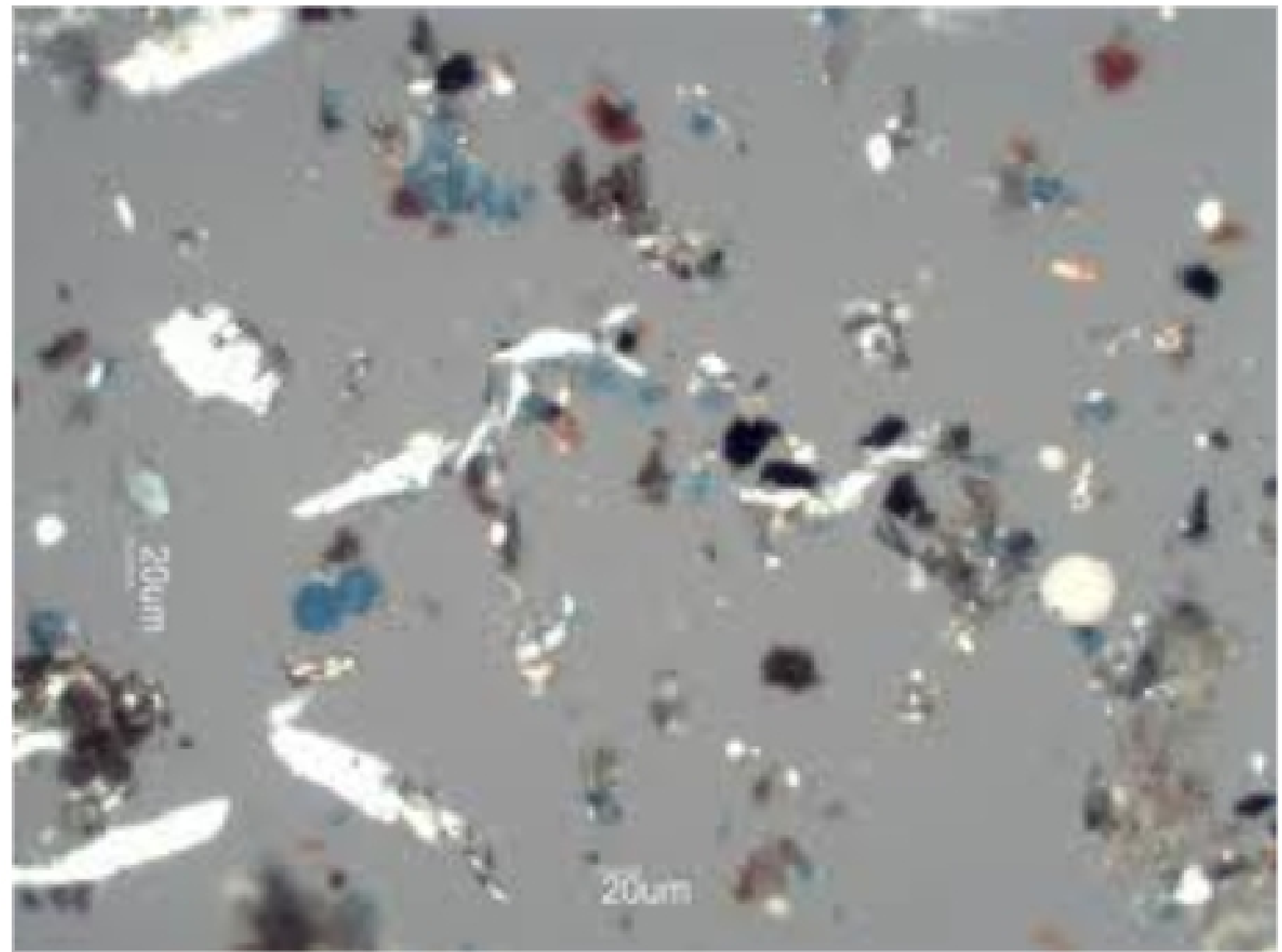
- Particle Size Distributions

Roy J. Rando, ScD, CIH
Professor
GEHS



- environmental particles of interest range in size from $\sim 100 \mu\text{m}$ to $0.1 \mu\text{m}$
- almost all natural and anthropogenic particles are ***polydisperse***
 - *exceptions: pollens, spores, some fumes*
- variability in particle sizes of aerosol clouds must be handled using statistical procedures
 - *particle size distribution*
 - *measures of central tendency and variability*

dust from paint spray booth
(polydispersed particles)



mold spores
(monodispersed particles)