

# Answers in Studying Molecular Biology

How does human genetic information differ from our closest relative?

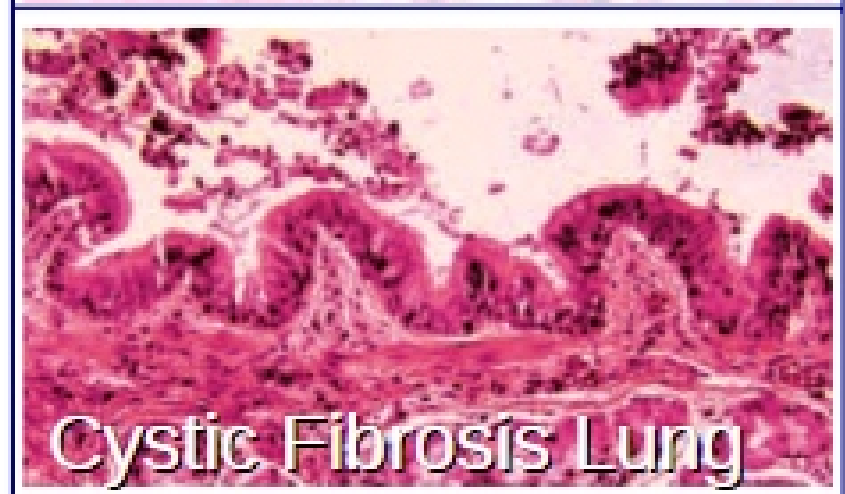
*FOXP2* that encodes for a speech/language development protein split from the ape lineage 6 million years ago



# Answers in Studying Molecular Biology

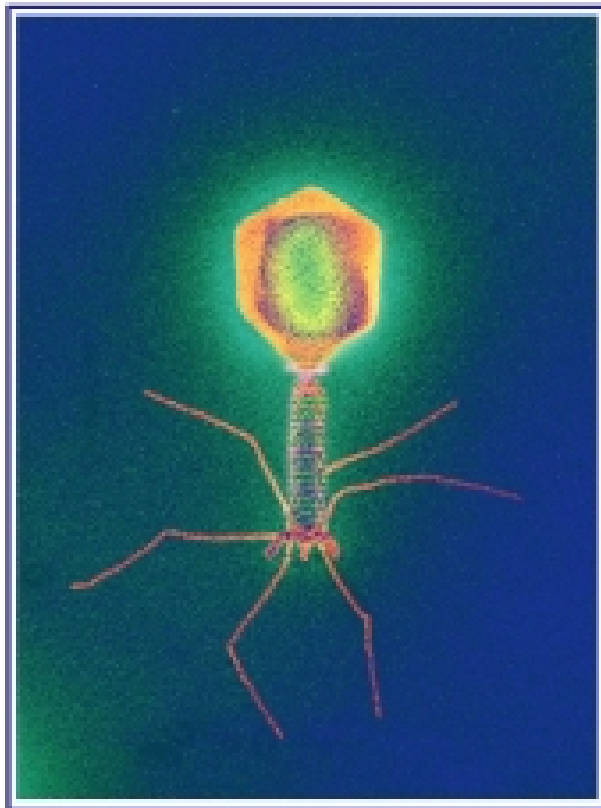
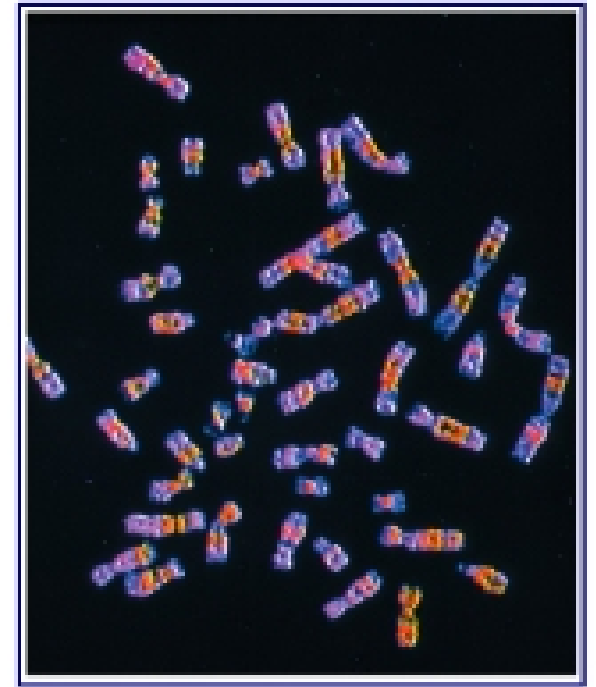
**Are humans genetically programmed to contract certain diseases?**

**Cystic fibrosis with an occurrence of 1 in 3,000 for U.S. babies is caused by a defective protein resulting in high lung secretions**



# DNA: The Genetic Code

Deoxyribonucleic acid (DNA) was identified in 1944 as the information required to transform normal bacterial strains to pathogenic ones



In 1951 DNA and *not* proteins was confirmed as the infectious agent for bacteriophages (viruses that infect bacteria)