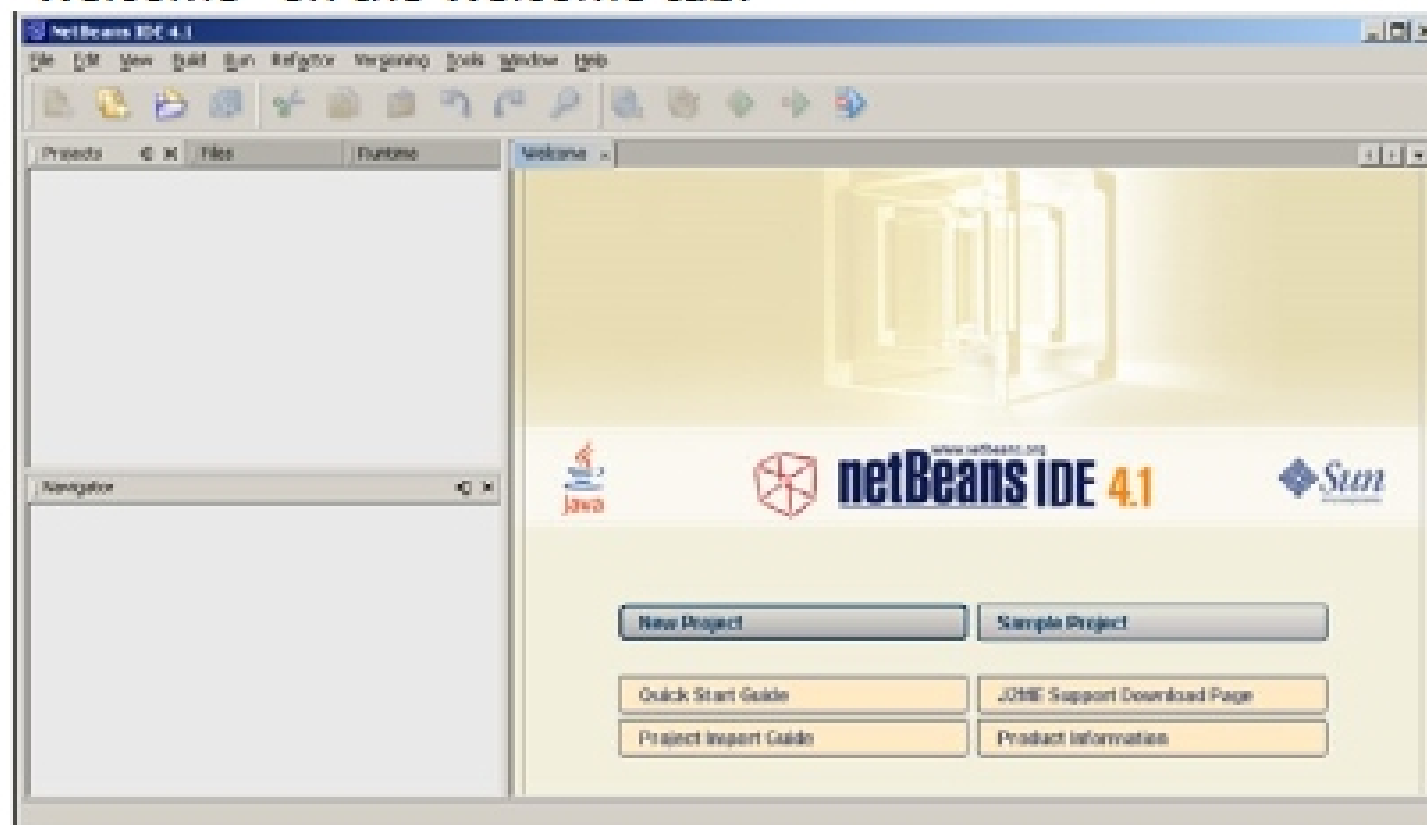


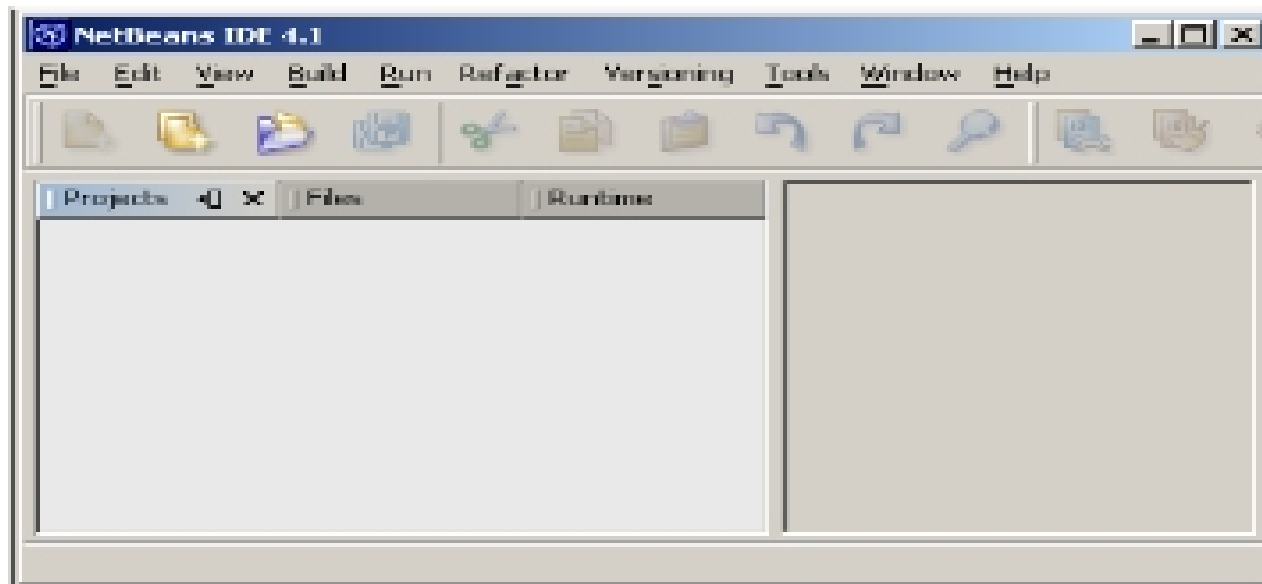
Using NetBeans to Create and Run a Java Application

NetBeans is an open source IDE (integrated development environment) available to programmers who want to develop Java projects. Since it is an IDE, the tools needed for editing, compiling, building, debugging, executing, and obtaining online help are all integrated in one graphical user interface. Using these tools effectively can greatly increase your productivity.

1. **Start NetBeans** by selecting **NetBeans IDE 4.1** from the Start menu or by double-clicking the desktop shortcut. If the Welcome window appears, close it by clicking on the “x” just to the right of “Welcome” on the Welcome tab.

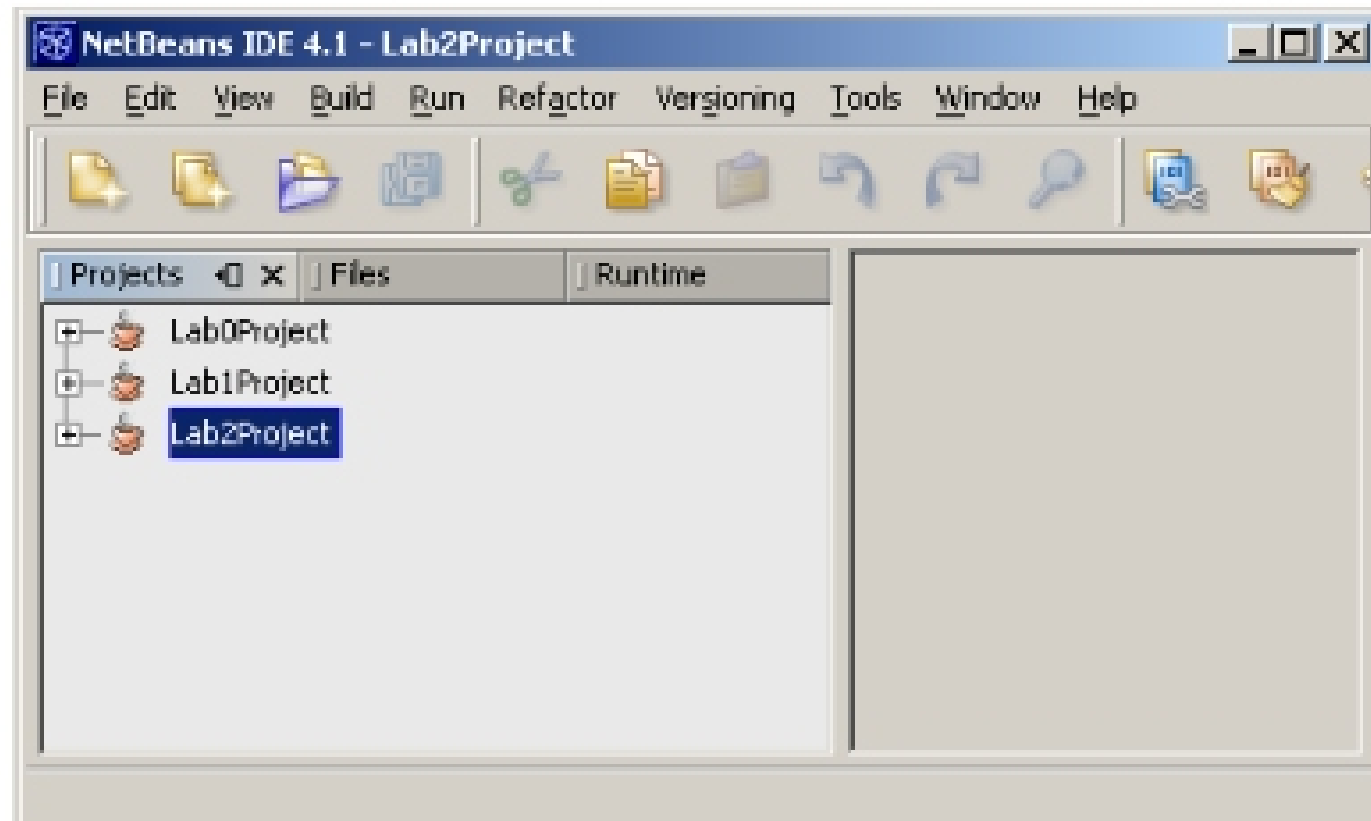


You may also close the **Navigator** window by clicking on the “X” to the far right of its title bar. You should now be observing only the **Projects**, **Files**, and **Runtime** window title bars on the left hand side of the main workspace window and a blank, empty panel on the right. (If for some reason they are not, or have been closed accidentally, you can select the **Window** menu and select the **Projects** choice, **File** choice, or the **Runtime** choice to get them back.



1

- 2. Project Window:** In the screen shot below, the **Project** window is open showing that NetBeans was previously used to create several earlier Java projects (Lab0Project, Lab1Project, and Lab2Project). Your window should be empty at this point.



To switch between the Project, Files, or Runtime windows simply click on the desired window's title bar.) Select the Project's window if it is not currently selected.

Before starting, you should create a folder on your desktop entitled COP3540. Each lab project this semester will be entitled, **projectyouruserid**, where **i** is the number of the project. Each project you develop will be located in a different folder within COP3540.

- 1** To continue working on a project that was begun earlier, simply click on the desired project in the Project window and continue development. You must also ensure that the project you are working on is the Main Project, and there can be only one Main project.

3. New Application: To create and run a new Java **application** you must first create a project. In the following exercise we will be creating a project named **projectyouruserid**.